

M
ARTISTIC SILVER

MOLINA

Quality Silversmiths since 1939. SPAIN





Raúl Molina Salazar
President

LETTER FROM THE CHAIRMAN

We are pleased to present our new and updated 2017-2018 catalogue showing as always our three collections: Artistic Silver, Artimetal and Procesionalia. Within these three Collections you will find the most comprehensive and varied choice of religious metalware, where design and quality are our main goal and the foundation for our prestige renowned worldwide throughout our 78 years of history.

Our thriving innovative character in this unique market is shown along the 132 pages of this catalogue. You will find new pieces and suggestions focused in offering you the widest and most specialized range of liturgical art pieces.

Our sheer capacity for manufacturing custom and bespoke items is also widely known among our prestigious clientele. Our design department and expert team of skilled craftsmen, formed through generations in all the techniques involved in the art of silversmithing, will make your project a reality and will develop it into an everlasting work of art.

Also, we encourage you to trust our expertise in restoring all kinds of liturgical metalware. During this restoration process we guarantee the preservation of the authenticity of the piece and we use the same artisanal techniques used by the silversmiths who originally created the piece.

As always, please let us guide you and help you in all aspects towards the purchase of your cherished piece from any of our comprehensive collections to assure your needs are completely satisfied. Our long tradition as expert craftsmen is your best guarantee.

Our international network of specialized distributors will provide you with the kind of professional and personalized attention you deserve.



ARTISTIC SILVER
M
MOLINA

Quality silversmiths since 1939. SPAIN

...Quality silversmiths since 1939



Luis Molina Acedo, 1949.

In 1939, after the Spanish Civil War, Luis Molina Acedo started working as an apprentice silversmith in the Plata y Bronce workshops of Madrid, run by his father, Luis Molina Pérez. He was only 15 years old. There, he carefully learnt from the old workshop masters the ancient and beautiful techniques used by the European silver and goldsmiths of yesteryear, such as embossing, chiselling, hand engraving, fire enameling and, very importantly, drawing and the roots of the classic, baroque, romanic, plateresque and Gothic styles. Very soon he was already designing and hand crafting fine ecclesiastical silverware that was actively sold throughout the provinces of Spain.

The years that followed the war were very hard, and this moved him to migrate, aged twenty-four with his wife and 2 year old son to Ecuador in 1949 and to establish himself with a small silversmith workshop in Quito, Ecuador.

His reputation rapidly grew inside the active Christian Community of South America due to his everlasting perseverance, the quality of his totally hand crafted sacred vessels and his personal and professional service. Before he returned to Spain during the mid 1950's, his one-man workshop in Quito had grown steadily and he was able to establish a new workshop in Lima, Peru with around fifteen skilled workers.

Great examples of his work can still be found in that continent, all showing the purest Spanish and colonial styles.

Finally, in 1960, he was able to fulfill his dream, and founded the actual workshops in his much missed Madrid, Spain, which are synonymous for the highest possible quality that only the Christian Cult deserves and for an unsurpassed service.

By the year 1966, the staff had grown to more than 50 skilled workers, as the different religious communities continued demanding more and more quality metal ware and the old religious silversmithing workshops across Europe started fading away.

Although very hard times like the Vatican II and the Spanish Transition came after the 1960's bonanza, when many companies had to shut down their doors, the company struggled and once again survived by offering absolutely the best hand crafted sacred vessels with absolutely the best service.



"Mudejar" style chalice hand crafted by Luis Molina Acedo during his time as an apprentice silversmith in the Plata y Bronce workshops of Madrid, circa 1939.



Custom baroque frame, chiselled and embossed for the portrait of the Madonna of the Cathedral of Quito, Ecuador in 1952. It is shown here carried on procession outside the Cathedral that same year.



In 1983, Miguel Boyer, Spain's former Minister of Economy hands over Luis Molina Acedo the award given by the Chamber of Commerce of Madrid for the excellent volume of annual exports achieved the previous year.



His Holiness, John Paul II celebrates the commemorative Mass of his 50 years since ordination with our Gothic chalice # 2392, presented to him for this very special occasion.

The spectacular increase in the exports led to the creation in the U.S.A. of a wholly owned subsidiary logistic distribution center in Warwick, Rhode Island in the year 1981. It was established with the name Artistic Silver, Ltd. and canalized all the products and services to our selected network of specialized distributors inside the North American continent. The company was awarded in 1983, 1985 and 1986 with the gold medal for its annual exports by the Chamber of Commerce & Industry of Madrid.

Today, Luis Molina Acedo, S.A. is a modern, 100% family owned and operated company already in its fourth generation with a qualified staff formed by more than 90 dynamic and enthusiastic people. We only use absolutely the best materials combined with the know-how we have developed throughout the years and the most modern techniques to guarantee the highest quality standards, meeting any possible need that today's Christian Church may have for the celebration of the Liturgy.

With this heritage, we can only assure we look at the future knowing we will do our best to continue offering all our customers around the world what our founder established as the principles of this company.



Of all the many custom articles we have hand crafted throughout our history, perhaps the one we are most proud of is the “Botafumeiro”, the world’s biggest censor, housed inside the Cathedral of Santiago de Compostela, Spain. The original Botafumeiro, hand wrought in sterling silver on the XV Century was stolen from Spain during the French Invasion at the beginning of the 19th century and molten into silver coins. A new Botafumeiro was built in 1851 by the Spanish silversmith José Losada, in brass, finished in silver plate to match with the original. In 1971, a further Botafumeiro was entrusted to us, a faithful replica of the XV Century original, hand crafted in solid sterling silver. It was completed and delivered personally by Luis Molina Acedo in the record time of one month. It is regularly used, altering with the 1851 brass original, majestically flying across the main body of the Cathedral and spreading the fine incense odour over the thousands of amused pilgrims.

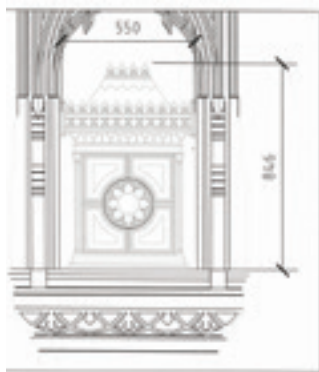


The workshop staff who took part in the construction of the Botafumeiro proudly stand alongside their creation, just minutes before its departure for Santiago de Compostela in September, 1971.

Quality Custom Work & Projects



The tabernacle sits majestically under the marble baldachino at the Cathedral’s Chapel for perpetual adoration of the Host. The integrity of the architect’s original design can be appreciated from any angle.



The fact of being highly specialized in true gold & silversmith’s techniques and our heritage in handling all sorts of artistic jobs in precious metals since 1939 gives us an extra edge when entrusted with your custom commission. Our skilled team of designers will develop a quality pencil drawing which will serve our experienced silversmiths to execute your exclusive piece by hand, forging and giving shape to the metals, chiselling, embossing, hand engraving, fire enamelling etc. The built piece will then follow a long process in which meticulous hand polishing, stone & enamel panel setting and a rich plating are carefully carried out to ensure first class quality standards.

Our extensive network of specialized dealers will be glad to work with you and submit your ideas to us in order to study the project, develop an exact and firm quote and create a workshop drawing to show you how your exclusive item would look. We will strive to create the precise article that will meet your specific liturgical needs and exceed your expectations.



Mounting and adjusting of all the engraved panels, doors and other fittings. It is essential to execute this phase with the utmost perfectionism to ensure a quality product. The tabernacle is after taken apart once again and carefully polished & plated.

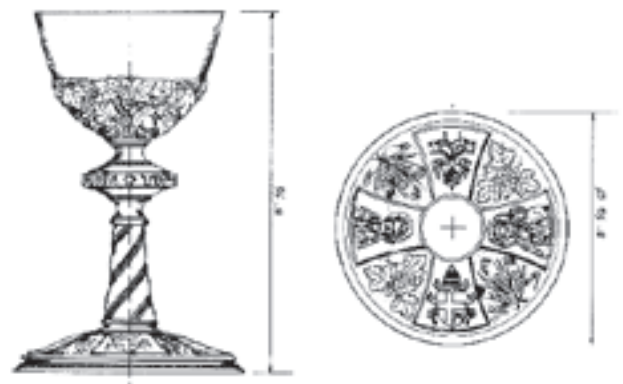
This tabernacle, hand crafted for St. Peter’s Cathedral, Belfast (Northern Ireland) is a faithful representation of our ability to hand craft all sorts of custom work in metal. The beautiful rich medieval design of the Architect, Mr. Richard Pierce was carefully studied and understood by our custom orders department, creating additional sketches to give dimension to the piece. It was then executed by our craftsmen from plain sheets of high quality brass which was heavily worked with more than 200 hours of expert labour. We are very proud of this project and for having had the chance to contribute to the great re-opening of the Cathedral, which has been intimately linked to the Catholic community of Belfast since 1866.

St. Peter's Ambry 2009

This magnificent ambry was commissioned to us back in Easter 2009. Specially developed by Maxwell-Pierce Architects, it was thoroughly handcrafted in brass by our craftsmen to match with the tabernacle and Evangelarium supplied by us previously to St. Peter's Cathedral, Belfast.

With a colossal height of over 270 cm. and a massive amount of solid brass employed in its construction, this ambry has been one of the most difficult pieces we have ever worked on. Besides the fine machining carried out on its columns and the heavy duty construction carried out on the base, the most difficult task on this ambry was the making of the framework that holds the multiple bevelled pieces of glass, required to display the three oil stocks housed inside.

After building up the piece, every component was taken apart and polished carefully before applying a durable layer of oven baked lacquer to assure an impeccable finish for many years to come. The result achieved speaks for itself and we hope it will serve as an example of the degree of quality and attention to detail employed when crafting any of our custom creations.



Exclusive sterling silver chalice presented to His Holiness John Paul II in 1990 by the Molina Family.

The node reads His Holiness' famous words "Totus Tuus", while the base depicts the image of Our Lady of Czestokowa and St. Peter as well as the Papal and Vatican seals. The design, personally created by Luis Molina Acedo was wonderfully executed by our team of silversmiths.



This tabernacle was commissioned under special request in the fall of 2006 for a very special location: The Cathedral of SS Peter & Paul in Philadelphia, USA. Our custom orders department worked endlessly for around three months together with our customer St. Jude Liturgical Arts and we managed to build it from scratch parting from sheets of brass, making sure that it was a faithful representation of the original drawings.

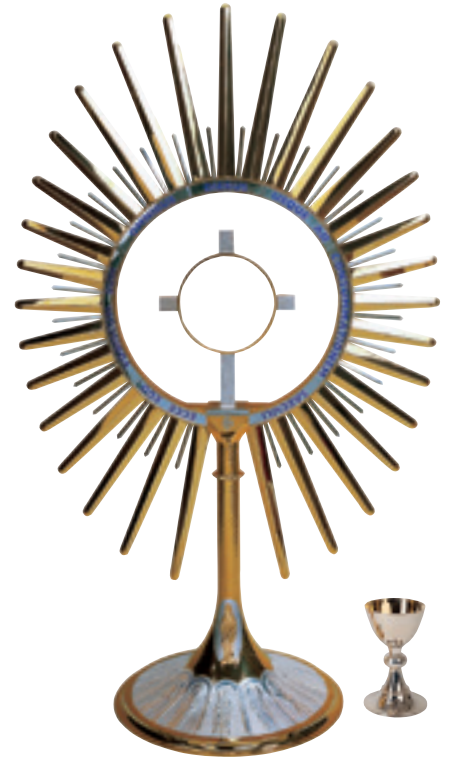
Slowly, the metals were worked on with the expert hands of our master craftsmen, conforming them to the necessary shape and specifications. Specially laborious were the oval shaped dome and the delicately embossed door panel depicting the Agnus Dei. The finished product looks superb sitting majestically on the main Altar of the Cathedral and is a faithful example of our capability to handle, from beginning to end, all kinds of custom projects achieving only the highest craftsmanship and the most demanding quality standards.



Medjugorje Magna Monstrance

Custom handcrafted monstrance, dedicated to Our Lady of Medjugorje (Bosnia-Herzegovina) in 2001. With a total height over 5 feet, delicate hand construction using solely sterling silver and a blend of ancient techniques such as embossing, engraving and fire enamelling, this piece belongs to a class of its own.

The initial concept of this magnificent monstrance, conceived by Fr. Svetozar Kraljevi as an object to be seen from the distance by each and every one of the thousands of pilgrims that gather in the Basilica each day, was later refined and designed by the Spanish architect Ángel Carcía Álvarez and finally executed by our select team of master silversmiths, who were entrusted with the difficult task of translating the design into reality. Once finished, the piece boasted a unique mix of artistry, elegance and quality difficult to find nowadays. This is and will always remain as one of our favourite bespoke creations and we feel honoured to know that it has remained in use on a daily basis since it was delivered.



Ave Maria Tabernacle (Naples, Fl)

This is a project we worked on together with Baker Liturgical Arts for two full years and one we are most proud of. Ave Maria Catholic University is the Unites States' most prominent Catholic University to have been built in the last 100 years and the tabernacle to reside in its magnificent Shrine should be only worthy of this condition.

With more than 250 lbs. of the best available metals used in its manufacture, massive overall dimensions of 63" wide x 47 tall, thoroughly handcrafted construction in solid, perfectly polished, gold plated brass including impeccably finished



royal blue fire enamel over hand wrought criss-cross panels and other features such as twelve individually set rare tanzanite stones, this tabernacle boasts the same level of expertise as the best silversmith's creations from yesteryear which we make available to you in the XXI Century.



Custom Chalice, paten & Ciboria set for Pope Benedict's 2008 Historic U.S.A. Visit

Tradition, Beauty and Excellence were always priorities when designing these pieces in collaboration with our distributor Baker Liturgical Arts creating a simplified version of one of Christianity's most important pieces: The Carlo Magno chalice (Carlo Magno was appointed in 774 A.D. protector of Rome by Pope Adrian I). The cup bears two pristine fire enamel medallions depicting the Pope's coat of arms and Archbishop Wuerl's coat of arms. The base shows another six fire enamelled medallions among which the Washington, D.C. Diocesan Cross stands out in front. The base is ultimately adorned with Pope Benedict's two mottos: Spe Salvi : Deus Caritas Est.



World youth day Madrid 2011

This delicate set was created under special request from our distributor Santarrufina, S.L. and it has proven once again the sheer capacity of our workshop to manufacture unique works of art for the Catholic Liturgy.

All pieces were executed entirely in sterling silver with 24 karat goldplating. They were embossed and chiselled by hand with a rich floral motif, featuring in the cups the images of the Four Evangelists. The bases were adorned with four fire enamelled medallions depicting the coats of arms for His Holiness Benedict XVI, His Eminence Cardinal Rouco Varela, the Holy See and the Diocese of Madrid.

Quality restorations

Having created works of art for the Catholic Cult for over 60 years and because of the highly qualified master silversmiths in our workshops, all of them experts in all the manual techniques used and developed all along history, we can guarantee the most professional and qualified service for your restorations of religious metalware.

With the passing of time and due to its normal use, truly works of art, both antique and contemporary suffer degradation and damages in their finishing which compromise the original material value. In our workshops, we are highly qualified to restore your work of art and bring it back the original beauty and value it had when it was created. We would always follow the same construction methods and use the same materials and techniques used by their creator when they were first built. This guarantees that your work of art will NEVER BE ALTERED, a golden rule in the art of restoration. Unfortunately, it is very common for us to receive distinguished works of art to be restored in which this golden rule was not followed in previous repairs and even in these cases, we are still capable of bringing the pieces back to the condition they should have.



Before: This beautiful German chalice dating from the early 1900's was in an original but unfortunate state. Had some of its enamels chipped off, and was missing some stones. It was also crooked and was missing its inner core that held it up together.



After: After meticulous stripping, all the pieces were removed, inspected and, if missing, duplicated. All fire enamel work was restored and it was fitted with a proper inner core. It was then hand polished, buffed and plated in 24 kt gold thus looking as good as the first day it was built.

Botafumeiro inside the Cathedral of Santiago de Compostela (Spain, 1851)

Well known is the Huge Censer that is "flown" inside the Cathedral of Santiago de Compostela in Spain during the Pilgrim Mass every Sunday dating back to the origins of the pilgrimage itself. Nowadays, there are two censers used in this spectacular celebration. One of them, dating

from 1851, was executed by the silversmith Losada and the other one, entirely made in sterling silver came from our workshops. It was manufactured in 1971 as a replica of the piece from 1851.



The censer from 1851, entirely made in bronze and plated with silver had suffered numerous damages due to the passing of time and also because of its continuous use. Along the years, these damages were repaired, sometimes, by non qualified artisans and the censer was in a considerably battered condition. Our workshops were required, due to our expertise in the manufacturing of the sterling silver censer, to study the total restoration of the 1851 piece in order to bring it back to its original appearance and also to revise the safety of a piece such as this, masterpiece of the Spanish silversmithing, given that, while flying, it reaches the inertial mass equivalent to approximately 1000 kilograms.

Today, we can proudly say that the restoration commissioned to us of this emblem of the Catholic Religion was able to "fly" along the nave of the Cathedral once again during the Holy Week of 2006 showing its original aspect and with the maximum safety just as it was imagined and executed by the silversmith Losada back in 1851.

Chalices & Ciboria

Our silversmiths combine elegant design and pure craftsmanship to create chalices of renowned quality that will last a lifetime and that are worthy of the celebration of the Liturgy. When selecting an artistically built chalice you are contributing to the development and maintenance of the fine art of the liturgical silversmith, a profession intimately linked to the origins of the Christian religion which has enriched the western civilization since immemorial times. In this catalogue, you will find the broadest selection of chalices available in the industry that will enable you to make your important decision. Under special request, many can be modified with countless options to make sure we meet your specific needs. We also specialize in creating bespoke chalices of the highest quality for our customers from scratch.



The term "All Sterling Silver" refers to chalices and ciboria entirely made in sterling silver with only the internal connecting hardware made in non-precious metals. All prices in this catalogue for items with cup in Sterling Silver or entirely made in Sterling Silver are only approximate. Please, ask for an updated price before ordering any piece containing Sterling Silver.

MAESTRO COLLECTION

The sacred vessels presented in this collection are a faithful testimony of the sheer artistic quality developed by our master silversmiths throughout their life. Most are the result of our designers' creativity and some are replicas of Christianity's historic chalices. In all of them, only the purest craftsmen's techniques transmitted from the Medieval Ages such as embossing, hand engraving or fire enamelling have been applied resulting in real works of art.



ST. REMY

Widely known as the "St. Remy", the chalice of St. Remigius is probably the most beautiful and treasured symbol of a Christian sacred vessel. Its sheer beauty, magnificent craftsmanship and interesting history make it a legend in its own right. St. Remigius, Apostle of the Franks and Archbishop of Reims, France, during the VI Century was a very influential man who converted the Franks to Christianity. The Franks had been mainly warriors until then and had robbed or destroyed many of the sacred vessels of the Churches of the era. It is said that, after the Franks converted to Christianity, the chalice of St. Remigius was cut from the gold of the celebrated vase of the Church of Soissons, previously broken by a soldier of Clovis, King of the Franks, as a gesture of regret. The St. Remy chalice has been preciously kept since then in the treasury of the Cathedral of Reims, being even used by the Kings of France to communicate under the species of wine at the end of the Coronation ceremonies. Our version of this mighty chalice is a living proof of the degree of expertise, perfection and attention to detail transmitted through generations of our own craftsmen. Every part, every bit of it is made by hand with the purest techniques used by the great medieval silversmiths mixed with the most modern plating methods to assure that every one of them is a worthy tribute to the original chalice and a piece of art that will further its value with the passing of time. Matching Ciboria, open Ciboria, intinction set, cruets set and monstrance available.

2270 "The St. Remy" Chalice & Paten

This masterpiece is an accurate replica of the original twelfth century St.Remy Chalice, housed in the Cathedral of Reims (France). It is completely hand made in 925 sterling silver gold plate. Attractive hand chased outer cup and base with open arch design exposing the brightly polished inner cup and base. Set with 32 genuine stones (Amethysts, Lapis Lazulis, Green Venturines and Garnets) as well as adorned with cloisonné fire enamel, the St. Remy chalice is a superb blend of beauty, quality and dignity of design.

Measurements:

Height: 7 3/8"

Cup: 5 1/4"

Capacity: 18 Oz.

Paten: 7" dia.

*Same as above, partially hand made,
Sterling Silver, g/p finish

2271 "St.Remy" Ciboria.

Matching ciboria

9 1/2" Ht. - 5 1/8"

Cup - 250 Hosts

All Sterling Silver, g/p

*Partially hand made





2919
"St. Remy" Intinction set
 Chalice 4 1/4" Ht. - 3 1/8" Dia.
 Open Ciboria 4 1/8" Ht. - 6" Dia.
 Boat: 5" Ht. x 4 1/4" dia.
 Sterling Silver gold plate
 *Partially hand made,
 Sterling Silver g/p



754
"St. Remy"
 Tray: 9 1/4" Long x 6" Wide.
 Cruet: 6" High.
 Brass goldplated
 Sterling Silver g/p



7290
"The St. Remy"
 This beautiful monstrance, which matches the St. Remy chalice, is one of the finest examples of the expert craftsmanship of our silversmiths. Made in 925 sterling silver or brass 24 K gold plate, with cloisonné fire enamel in the cross, node and base, it is set with 40 genuine stones (Amethysts, Lapis Lazuli, Green Venturines and Garnets).
 Measurements:
 Height: 24"
 Head Diameter: 12 1/2"
 Brass Gold Plated
 Sterling Silver, Gold Plated



4118
Tabernacle
 Rich German Romanesque design, matching the St. Remy design adorned with fire enamel cabochons and cloisonné ornaments.
 Two sizes:
A. 23" High x 14 3/4" Wide x 14 1/2" Deep.
 Double Door Opening: 14 1/2" High x 13" Wide.
 Brass Silverplated
 Brass goldplated
 Brass Two Tone (Gold & Silver)
B. 35 1/2" High x 28" Wide x 17 1/2" Deep.
 Double Door Opening: 10 1/2" High x 20 1/2" Wide.
 Brass Silverplated
 Brass goldplated

TASSILO

The origin of this famous chalice can be traced back to the Duke Tassilo III of Bavaria, Germany, VIII Century. It is one of the most important treasures of this era even though it was not known until the XI or XII Century. It is the symbol of the wedding between the Duke Tassilo III, from the Agilolfing dynasty that governed Bavaria and Liutpiric, the daughter of the Lombardian King Desiderius, and was presented by them in 777 to the Monastery of Kremsmünster (Germany) where it is still preserved today.

The only modification to this original chalice is the fact that the wording on the base from the original Tassilo chalice (+ TASSILO DVX FORTIS + LIUTPIRC VIRGA REGALIS +) has been changed to the Latin text PER IPSUM CUM IPSO IN IPSO + meaning FOR HIM WITH HIM IN HIM +, of important meaning in liturgy, thus making our version more appropriate for its use in a liturgical catholic service. Our chalice is also slightly smaller in size, making it easier to use during the services than the original of considerably larger dimensions. The design and style of the figures present on our chalice are sensibly more refined and symmetrical than those of the original, of a more primitive design. The figures represented on the base are The Blessed Mother, Saint Paul of Tarsus, St. John the Baptist and Saint Theodore while the ones on the cup are The Pantocrator and the Four Evangelists with their symbols. Matching Ciboria, open Ciboria, cruets set and monstrance available.



2330-P
"The Tassilo" Concelebration Main Chalice

Faithful replica in design and size to the original Tassilo chalice, **showing 32 genuine garnets around the node**, finished in two tone (gold and silver) 10" height - 6 1/4" Ø cup
Brass
Inner Cup Sterling
All Sterling Silver

2330-P Paten
Brass
All Sterling Silver



2331
"Tassilo" Ciboria
8 1/4" Ht. - 5" Dia. - 200 Hosts.
Brass
Inner Cup Sterling
All Sterling Silver
* See matching monstrance on page 72

2330
"The Tassilo" Chalice & paten

An exquisite reproduction of the original VIII century Tassilo Chalice, finished in two tone (gold and silver).
Chalice is 7 1/2" Ht. - 4 1/2"
Cup - 18 Oz.
Paten is 6 1/2" diameter.
Brass
Inner Cup Sterling
All Sterling Silver



2914
"Tassilo" Open ciboria
3 1/2" Ht. - 5 1/2" Dia. - 200 Hosts.
Brass
Inner Cup Sterling Silver
All Sterling Silver



AS-145
Eastern-Rite Set
page 39



2332
"Fire enamel Tassilo" Chalice & Paten
(Matching Ciboria available)
Fire enamelled version of the VIII century Tassilo chalice, executed in cloisonné fire enamel, solid 925 sterling silver, 24 K gold lined cup.
It features The Messiah and the Four Evangelists on the cup with the inscription in Latin "Per Ipsum, Cum Ipso, In Ipso"
(For Him, With Him, In Him) on the base.

Measurements:
Height: 8"
Cup: 4 1/2"
Capacity: 20 Oz.
Paten: 6 1/2" dia.



2230
Chalice and Paten
Exquisite version of the Tassilo chalice, finished in two tone (gold and silver)
7 3/8" height - 5 1/8" Ø cup
Brass
Inner Cup Sterling
All Sterling Silver



2133
"Tassilo" Chalice & 6 1/4" Dish Paten
Accurate replica of the original Tassilo chalice.
7" Ht. - 4" Cup - 14 Oz.
Brass two tone
Inner Cup Sterling Silver
All Sterling Silver

TASSILO RELATIVES



4109
Tabernacle
page 85



7274
"Tassilo" Monstrance
page 72



753
"Tassilo" cruet set fitted with glass liners.
page 103



230
"Tassilo" Ostensoria
page 76

THE GOTHIC

This beautiful chalice was commissioned under special request by The Vatican as a present to His Holiness, John Paul II to commemorate his 50th anniversary in the priesthood. The elegant, octagonal Gothic design created by our artistic department was masterfully executed by our silversmiths using sterling silver throughout. The result was impeccable and its generous proportions made it look impressive on the main Altar during the commemorative Mass in St. Peter's Basilica.

The many requests received by our clients for this chalice moved us to develop a matching Ciboria, open Ciboria and monstrance, thus completing a stunning, full Altar set.



2392
"The Gothic" Chalice & 6 1/2" scale paten with ring

Exquisite deep relief work, depicting the Four Evangelists imbedded into node chapels, Christ and the Twelve Apostles on the cup and a deeply sculptured "Flower of Passion" motif on the base. Chalice and paten made in 925 sterling silver, gold lined.

Measurements:
Height: 10 3/8"
Cup: 4"
Capacity: 13 Oz.
Paten: 6 1/2" diameter.



2393
Ciboria

Matching Gothic Ciboria.
11 1/2" Ht. - 6 7/8" Dia
350 Hosts.
All Sterling Silver



2392-2
Open Ciboria
5 1/2" Ht. - 7" Cup - 370 hosts
All sterling silver, g/l





2132-E

"The Twelve Apostles" Chalice & 6 1/4" scale paten with ring

Rich filigree overlay on cup and base, with fine hand-painted fire enamel medallions, depicting the Twelve Apostles. Chalice and paten made in sterling silver, 24 karat goldplated finish.

Measurements:

- Height: 8 1/2"
- Cup diameter: 4 3/8"
- Capacity: 12 Oz.
- Paten diameter: 6 1/4"



2132-01-E

Ciboria

10 1/8" Ht. - 5" Cup - 200 hosts
All sterling silver, g/p



2132-02-E

Open Ciboria

4 1/2" Ht. - 5 1/8" Cup - 250 hosts
Inner Cup Sterling, g/p
All sterling silver, g/p



2132-02

Open Ciboria

4 1/2" Ht. - 5 1/8" Cup - 250 hosts
Brass, g/p
Inner Cup Sterling, g/p
All sterling silver, g/p



2132

"The Apostles" Chalice & 6 1/4" scale paten with ring

Fine filigree overlay on cup and base with oval engraved medallions of the Twelve Apostles.

24 Karat gold plate finish.
8 1/2" Ht. - 4 3/8" Cup - 12 Oz. 6 1/4" diameter dish paten.
Gold or Silver Plate
Inner Cup Sterling, g/p
All Sterling Silver



2132-01

Ciboria

10 1/8" Ht. - 5" Cup - 200 hosts
Brass, g/p
Inner Cup Sterling, g/p
All sterling silver, g/p



2374

"The Piety" Chalice & 6 1/4" scale paten With Ring

(Matching Ciboria available).

The richness of this elegant chalice is distinguished by the simplicity and grace of its classic lines.

Available in 925 sterling silver, 24 K gold plate with optional 20 K gold cup or 20 K solid gold overall. The cross on the base is adorned with precious gems (diamonds and rubies) while the node is imbedded with 8 rubies. The cup depicts "The Piety" completely hand engraved.

(Different motifs or images available on request).

The paten is hand engraved with the "JHS" symbol.

Sterling Silver

Measurements:

Height: 7 5/8"

Cup: 4 1/8"

Capacity: 12 Oz.

Paten: 6 1/4" dia.



2310

"The Genesis" Chalice & Paten

(Matching Ciboria available)

Made in solid 925 sterling silver, 24 K gold plate, with genuine lapis lazuli node and magnificent cloisonné fire enamel craftsmanship. The cup features the Pantocrator and the Archangels while the base represents the Creation of the World. The paten features the Pantocrator in fire enamel.

7 5/8" Ht. - 5 1/2" Cup - 25 Oz - 7" Dia.

THE ARDAGH

The origin of this chalice goes back to the second phase of the Christian Era, during the beginning of the VIII century. It was discovered in the late XIX Century in Ireland by a small boy that was digging potatoes in Reerasta Rath, near the village of Ardagh. The chalice seemed a treasure that most likely belonged to a rich and well established Irish monastery. Its unique low design with two handles, hand forged construction in solid silver, deeply engraved celtic ornamentation and fire enamelled cabouchons make this chalice the most important and richest of the first Irish Christian objects and clearly one of the finest metal pieces from the VIII Century that has been discovered so far.

Our version of the Ardagh chalice is taller and resembles more the shape of a chalice than the original. Like its predecessor, it features a deep celtic engraved design on cup, base and node as well as engraved and fire enamelled cabouchons. Ciboria and monstrance available.

2728

Chalice & 7"Ø Bowl paten

"The Ardagh", a version of the original Celtic chalice.

24 Karat goldplate contrasting on antique Silver Plate.

Adorned with fire enamel cabouchons and garnet stones.

7 3/4" Ht. - 5 1/8" Cup - 20 Oz.

Brass Two Tone

Inner Cup Sterling Silver

* See matching monstrance on page 74.



2740

Chalice

Simplified version of the Ardagh chalice. Ciboria & Open Ciboria also available.

7 3/4" Ht. - 5 1/8" Cup 20 Oz

Brass silver plated

Inner cup Sterling

2741

Ciboria

8 1/4" Ht. - 5

1/8" Cup

2742

Open Ciboria

4 3/4" Ht. - 5 1/4"

Cup



Original Ardagh chalice from the VIII Century, discovered in 1868 in Reerasta, Ardagh.



2430

Chalice & 6 1/4" scale paten with ring

Elegant, proportioned design evoking the great German chalices of the beginning of the XX Century. Exquisite filigree job featured on stem, node and outer cup, adorned with set reconstituted ruby and sapphire cabochon stones. The base features magnificent hand painted fire enamelled medallions depicting images of the Four Evangelists.

Height: 8 1/4" Cup Ø: 4 5/8" Capacity: 14 Oz.

Inner Cup Sterling, g/p

All sterling silver, g/p



2435

Chalice & 6 1/4" scale paten with ring

Delicate "ajour" grape and vine motif on cup and node, which is enhanced by four set, reconstituted ruby stones. The base is adorned with four exquisite fire enamel medallions showing the symbols of the Four Evangelists.

Height: 8 7/8" Cup Ø: 4 1/2" Capacity: 14 Oz.

Inner Cup Sterling, g/p

All sterling silver, g/p



2460
Chalice & 6 1/4" Dish paten

Stylish design with cut-out grape & vine node adorned with twelve faceted reconstituted garnet stones. The base has a delicately chiselled design on its upper part and features six elegant oval fire enamelled medallions set in raised bezels with images of the Four Evangelists, the Crucifixion and the Resurrection, alternating with six faceted reconstituted garnet stones.
Height: 8 1/8" Cup Ø: 4 11/16" Capacity: 14 Oz.
Cup sterling silver, g/p
All sterling silver, g/p

2490
Chalice & 6 1/4" Dish paten

Attractive design of Romanesque influence and the symbols of the Four Evangelists on the base. Spanish text on the base reading "Como el Señor me amó, así os amo yo a vosotros" which translates in English to: "Like the Lord Loved me, I love you".
Height: 7 1/8" Cup Ø: 4 1/2" Capacity: 15 Oz.
Inner Cup Sterling, g/l, with g/p cup
All sterling silver, g/l, with g/p cup



2320
"The Byzantine"
Chalice & 6 1/2" Dish paten

Collar ornamentation featuring the symbols of the Four Evangelists.
Hand hammered fluted base.
7 7/8" Ht. - 4 3/4" Cup - 16 Oz.
Patén 7" diameter.
Brass Silver Plated
Inner Cup Sterling
All Sterling Silver



AS 193
Ciboria

Richly ornamented, featuring five fire enamel medallions depicting the Four Evangelists and the IHS symbol.
13 1/2" Ht. - 7 1/4" Dia - 750 hosts.
Brass, Silverplated, gold lined



2480

Chalice & 6 1/4" scale paten with ring

Classic design blending together a beautiful cut-out node and a delicate grape and vine outer cup. The three raised panels on the base depict the Sacred Heart, the Blessed Mother and St. Joseph and are meticulously finished in two tone (gold and silver).

Height: 8 7/8" Cup Ø: 4 1/8" Capacity: 15 Oz.

Inner Cup Sterling, g/1

All sterling silver, g/1

2372

"The Visigoth"

Chalice & 6 11/16" E Paten

The "Visigoth", a rich version of a medieval chalice, adorned with cabouchons and red enamel.

8 3/8" Ht. - 4 7/8" Cup - 22 Oz.

Entirely Gold Plated

Inner Cup Sterling Silver



ROMANESQUE COLLECTION

The Romanesque art represents the spiritual unison of Europe and it is when the concept of Christendom arises. Western culture flourishes and the primacy of European culture will impose from then on its own dynamics of development, eclipsing both Byzantine and Islamic cultures. New constructive techniques arise and there is a fusion between expression and beauty in the figurative arts.

All of the Romanesque pieces in this collection have been developed by our silversmiths to reflect the beauty and character of this classic style, blending elegance, balance and craftsmanship in one.



***2312**

***"The Romanesque"
Chalice & Paten***

(Matching Ciboria available).
Made in solid 925 sterling silver, 24 K Gold Plate, this authentic work of art is distinguished by superb hand made cloisonné fire enamelling and features the Twelve Apostles around the cup and symbols of the Four Evangelists on the base.

Sterling Silver
Measurements:
Height: 8 1/8"
Cup: 5 1/4"
Capacity: 24 Oz.
Paten: 6 3/4" dia.

NEW

**AS 197-1-L
Oversize Ciborium**

9 1/2" Ht. - 6 1/2" Cup - 500 hosts
Brass Silver Plated
Inner Cup Sterling Silver, g/1
All Sterling Silver, g/1



**AS 197
Chalice & 6 1/4"
scale paten with ring**

Romanesque chalice featuring the Twelve Apostles and their Latin names around the cup. The base featuring the symbols of the Four Evangelists.
7" Ht. - 4 15/16" Cup - 14 Oz.
Silver Plated

Inner Cup Sterling Silver

All Sterling Silver

**AS 197-2
Open Ciboria**

5" Ht. - 6 1/4" Cup
350 Hosts.
Silver Plated, gold lined

Inner Cup Sterling Silver, g/1

All Sterling Silver

**AS 197-1
Ciboria**

9" Ht. - 5 5/8" Cup - 300 Hosts.
Silver Plated, gold lined
Inner Cup Sterling Silver, g/1
All Sterling Silver



2378
"The Romanesque"
Chalice & 6 1/4" Scale Paten
With Ring
 A Romanesque representation of the Twelve Apostles.
 7 7/8" Ht. - 4 3/8" Cup - 18 Oz.
 Brass Silver Plated, Gold lined
 Inner Cup Sterling Silver



2722
Chalice & 6 1/2" Bowl paten
 The "Apostles", features images of the Apostles, symbols of the Evangelists.
 6 3/4" Ht. - 4 7/8" Cup - 18 Oz.
 Brass silver plated
 Inner Cup Sterling Silver
 All Sterling Silver

2946
Ciboria
 Matching ornamentation.
 9" Ht. - 5" Cup - 300 Hosts.
With Enamel
 Brass silverplated
 Inner Cup Sterling
 All Sterling
Without Enamel
 Brass silverplated
 Inner Cup Sterling
 All Sterling



2945
"The Germanic"
Chalice & 6 1/4" scale paten With Ring
 Bold Germanic ornamentation, highlighted with blue fire enamel and genuine stones. Available with and without enamel.
 7 1/8" Ht. - 5 1/8" Cup - 20 Oz.
With Enamel
 Brass silverplated
 Inner Cup Sterling
 All Sterling
Without Enamel
 Brass silverplated
 Inner Cup Sterling
 All Sterling





2658
Chalice & 6" bowl paten
Last Supper sculptured around cup with red enameled background. Cross on base.
7 1/8" Ht. - 4 3/8" Cup - 16 Oz.
Silver Plated
Inner Cup Sterling Silver
All Sterling Silver



2133
"Tassilo"
Chalice & 6 1/4"
Dish Paten
Accurate replica of the original Tassilo chalice.
7" Ht. - 4" Cup - 14 Oz.
Brass two tone
Inner Cup Sterling Silver
All Sterling Silver



2495
Chalice & paten
7 1/2" Ht. - 4 7/8" Cup
Silver Plated



2497
Open Ciboria
3 5/8" Ht. - 6 3/4" Cup. 300 Hosts
Silver Plated



2496
Ciboria
8" Ht. - 4 3/4" Cup 200 Hosts
Silver Plated



2748
Chalice & 6 1/2" Bowl paten
The "St. Patrick", hand hammered with black node and engraved collar. 7 1/4" Ht. - 4 7/8" Cup - 20 Oz. Brass gold plated Cup Sterling Silver All Sterling Silver



2596
Chalice & 6 1/2" Bowl paten
Node with symbols of the Evangelists, finished in gold/silver tones. 6 7/8" Ht. - 4 5/8" Cup - 15 Oz. Completely Gold Plated
Cup Sterling, Gold Plated
All Sterling, gold Plated



2183-2
Open Ciboria
4 1/8" Ht. - 7" Cup. 300 Hosts
Brass silver plated



2183
Chalice & 6 1/4" Dish paten
Rich Celtic ornamentation representing the images and symbols of the Evangelists. 6 1/2" Ht. - 4 1/2" Cup - 16 Oz. Brass Silver Plated, Gold lined Inner Cup Sterling Silver

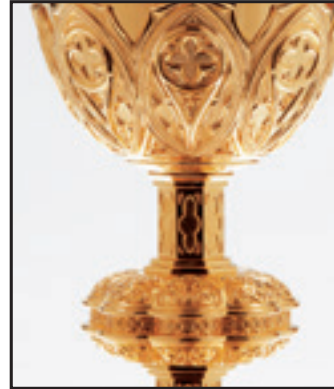


1840
Chalice & 6 1/4" Dish paten
Hand chased ornamentation. 7 1/4" Ht. - 4 3/8" Cup - 14 Oz.. Brass Silver Plated Cup Sterling Silver

GOTHIC COLLECTION

The Gothic period represents the zenith of the Western cultural process. During the 12th century the flourishing of the cities develops this style that faithfully represents the ideal of a free citizen. The artist acquires full independence. More slender and stylised forms give a more spiritual and closer vision of God.

Many of the chalices in this collection have been newly designed specifically for this catalogue, reassuring once again our tribute to this great classic style.



2445

Chalice & 6 1/4" scale paten with ring

Rich Gothic design and intricate octagonal construction come together on this work of art. Deep, elaborate artisanal jobs on all the elements of this chalice combine with expert craftsmanship, resulting in a chalice worthy of the purest tradition.

Height: 9 1/4" Cup Ø: 4 1/8" Capacity: 14 Oz.

Inner Cup Sterling, g/p

All sterling silver, g/p



2450

Chalice & 6 1/4" scale paten with ring

This chalice blends deep relief embossing and pure Gothic design, thus becoming a legitimate descendant of the great chalices of yesteryear. The flat and wide base, tall stems, embossed node and outer cup make this magnificent piece aesthetically pleasing from any angle.

Height: 9 3/8" Cup Ø: 4 1/16" Capacity: 14 Oz.

Inner Cup Sterling, g/1

All sterling silver, g/1





2465

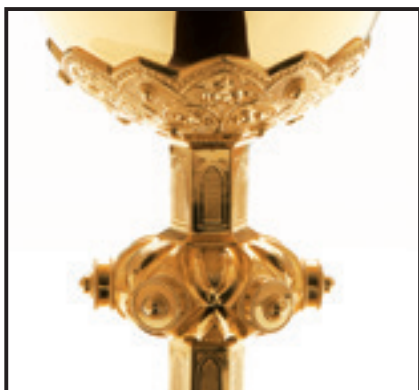
Chalice & 6 1/4" scale paten with ring

This masterpiece features the Stations of the Cross on its cup and base. The heptagonal construction on all its elements to represent each of the fourteen Stations is a faithful example of our silversmiths' ability. Each panel is finished in slightly oxidized silver plate contrasting with the gold plated embossed ornamentation on cup, base and the spectacular seven-pointed node.

Height: 9 5/8" Cup Ø: 4 1/16 " Capacity: 14 Oz.

Inner Cup Sterling, g/p

All sterling silver, g/p



2440

Chalice & 6 1/4" scale paten with ring

Sublime Gothic design, lightly embossed on cup and base with finely engraved stem. The base features beautiful engraved medallions showing the Four Evangelists, The Crucifixion and the Blessed Mother finished in silver plate with contrasting gold plated backgrounds. The delicate cord decoration around each medallion is matched on the node and stem.

The text on the cup reads:

"Calicem Salutaris Accipiam Et Nomen Domini Invocabo".

Height: 8 3/4" Cup Ø: 4 7/8" Capacity: 14 Oz.

Inner Cup Sterling, g/p

All sterling silver, g/p



2970

Chalice & 6 1/4" scale paten with ring

The artistry of our craftsmen is reflected on this piece of the purest Gothic design. Expert construction, chiselling, engraving and the best enamel work meet together on this chalice which well could be inside a museum. The base has six hand painted fire enamelled panels featuring the Four Evangelists, the Crucifixion and the Ascension, while the cup has a further three showing Christ, the Blessed Mother and St. Joseph. The node is hand engraved with the word "Agnus" and a PX on the front.

Height: 9" Cup Ø: 4 1/2" Capacity: 15 Oz.

Inner Cup Sterling, g/1

All sterling silver, g/1



2975

Chalice & 6 1/4" scale paten with ring

The pure and clean Gothic lines on this stunning chalice give it an inherent beauty. The base is masterfully engraved with the grape and vine design throughout while the cut-out outer cup sits low giving the whole an elegant touch.

Height: 8 5/8" Cup Ø: 4 3/8" Capacity: 14 Oz.

Inner Cup Sterling, g/p

Sterling silver, g/p



2980

Chalice & 6 1/4" scale paten with ring

Exquisite construction with cut-out stems, node outer cup and base in the purest Gothic fashion. The node is adorned with reconstituted, faceted rubies and sapphires resulting in a truly majestic piece.

Height: 9 7/16" Cup Ø: 4 1/4" Capacity: 12 Oz.

Inner Cup Sterling, g/p

All sterling silver, g/p



2410

Chalice & 6 1/4" scale paten with ring

Delicate Gothic design of balanced proportions. The base features six finely engraved medallions of St. Peter, St. Paul, St. James, St. John, St. Bartholomew and St. Jacob Maj. Also available with custom fire enamelled panels upon request.

Height: 8 3/8" Cup Ø: 4 1/4" Capacity: 15 Oz.

Inner Cup Sterling, g/1

All sterling silver, g/1



2985

Chalice & 6 1/4" scale paten with ring

Exquisite design meets the highest quality standards on this chalice. Cut-out "ajour" outer cup, node and lower collar and the finest engraving on the base showing six images of the life of Christ (Annunciation, Birth, Trip to Egypt, Baptism, Crucifixion and Resurrection), with the reliefs finished in silver plate to contrast with the gold plated backgrounds.

Height: 8 1/2" Cup Ø: 3 3/8" Capacity: 12 Oz.

Inner Cup Sterling, g/p

All sterling silver, g/p



2986

Ciboria

9 7/8" Ht. - 4 7/8". Ø 200 H.

Inner Cup Sterling, g/p

All sterling silver, g/p



2470

Chalice & 6 1/4" scale paten with ring

Classic Gothic design of contained dimensions. High relief embossing job on base and outer cup. Great attention to detail on the node on stem, featuring deep Gothic chapels and fine engraving job. Delicately finished in rich, 24 kt gold plate.

Height: 9" Cup Ø: 4" Capacity: 14 Oz.

Inner Cup Sterling, g/p

All sterling silver, g/p



2990

Chalice & 6 1/4" scale paten with ring

The engraving job executed by our craftsmen on the base and cup place this chalice in a class of its own. The text on the cup reads: Calicem Salutaris Accipiam Et Nomen Domini Invocabo.

Height: 8 3/4" Cup Ø: 4 3/8 " Capacity: 13 Oz.

Inner Cup Sterling, g/p

All sterling silver, g/p

2420

Chalice & 6 1/4" Dish paten

Original design of smooth lines showing various scenes of the Life of Christ on its base and cup. Beautifully finished hexagonal node with engraved rhombus reading JESUS with matching cross on stems, base and underside of paten.

Height: 8 5/8" Cup Ø: 4 3/4 " Capacity: 15 Oz.

Inner Cup Sterling, g/1

All sterling silver, g/1



2390
Chalice & 6 1/4" dish paten

Magnificent Gothic Chalice. Richly handcrafted, with delicate filigree open work around edge of base. 8 3/4" Ht. - 4 1/2" Cup - 12 Oz. Silver Plated
Silver Plated with Inner Cup Sterling Silver
All Sterling Silver



2391

Ciboria
10 3/4" Ht. - 4 7/8" Cup - 180 hosts
Brass, s/p, g/l
Inner Cup Sterling, g/l
All sterling silver, g/l



2380
Chalice & 6 1/4" dish paten

Unique Gothic chalice. Open filigree work on base. 9 1/4" Ht. - 4" Cup - 12 Oz. Silver Plated
Silver Plated with Inner Cup Sterling Silver
All Sterling Silver



2381

Ciboria
11" Ht. - 4 7/8" Cup - 180 hosts
Brass, s/p, g/l
Inner Cup Sterling, g/l
All sterling silver, g/l



2938
Chalice & 6 1/4" scale paten With Ring

Intricate Gothic ornamentation. Base featuring six delicate engraved medallions depicting The Crucifixion, Salvation symbol, Martyrdom of Isaac, Melchisedec's Ordination, The Manah and Paschal Lamb. 9" Ht. - 4 3/8" Cup - 14 Oz. Gold Plated finish
Inner Cup Sterling, g/p

2937
Chalice & 6 1/4" scale paten With Ring

Rich Gothic design. Base featuring six delicate medallions depicting different scenes of the Passion of Christ (The Lashing, Thorns Crowning, The Gethsemane, the Carrying of the Cross, The Crucifixion and The Resurrection). The text on the cup reads: Calicem Salutaris Accipiam Et Nomen Domini Invocabo. 8 3/4" Ht. - 4 1/8" Cup - 10 Oz. Brass gold plated
Inner cup Sterling Silver gold plated



2937-1
Ciboria
9 3/4" Ht - 4 3/4" Ø 250 H.
Brass Gold plated

2938-1
Ciboria
10 5/8" Ht - 5 1/8" Ø 250 H.
Brass Gold plated



2455
Chalice and 6 1/4" scale paten with ring
 Traditional Gothic design of elegant style. Unique workmanship of the filigree technique, this piece has the poise of the chalices from the late XIX Century. The three medallions on the base are top notch representations of the Crucifixion, St Joseph and child and the Virgin Mary, all featuring the best fire enamel work available in the market. Height: 10" Cup dia: 4 15/16" Capacity: 13 Oz. Inner Cup Sterling, g/p All sterling silver, g/p



2995
Chalice and 6 1/4" scale paten with ring
 Handsome design that boasts unparalleled originality. Deep embossing & chiselling work on base, node and outer cup with a base of unique design due to its multiple levelled and lobed base. One of a kind piece with our proven quality. Height: 8" Cup dia: 4" Capacity: 11 Oz. Inner Cup Sterling, g/p All sterling silver, g/p

2475
Chalice and 6 1/4" scale paten with ring
 A perfectly balanced and refined design that stands out among other taller chalices. Deep relief chiselling on base, node and outer cup with embossed and engraved medallions of the Four Evangelists on the base. Height: 7 3/4" Cup dia: 3 5/8" Capacity: 9 Oz. Inner Cup Sterling, g/p All sterling silver, g/p



NEW
2790
Chalice only
 Clean Gothic design. 8 5/8" Ht. - 4" Cup - 13 Oz. Brass Gold Plated Inner Cup Sterling, gold plated



NEW
2791
Ciborium
 9 1/2" Ht. - 4 5/8" Cup - 200 hosts Brass Gold Plated



NEW
2792
Open Ciboria
 4 3/8" Ht. - 6 3/4" Cup - 375 hosts Brass Gold Plated



2404
Chalice & 6 1/4" dish paten
 Elegant Gothic design, with hexagonal base and filigree cut out ornamentation on node. 8 5/8" Ht. - 4 1/8" Cup - 12" Oz. Silver plated, Gold lined Cup Sterling, Gold lined All Sterling Silver, Gold lined



2406
Open Ciboria
 Matching Open Ciboria. 3 7/8" Ht. - 6 11/16" Cup 400 Hosts Capacity Silver plated, Gold lined Cup Sterling Silver Sterling Silver



2405
Ciboria
 Matching Ciboria, with finial Gothic cross. 10 1/2" Ht. - 4 7/8" Cup - 250 Hosts Capacity Silver plated, Gold lined Cup Sterling Silver Sterling Silver

FLORENTINE COLLECTION

Each of the four chalices in this collection equally represents the smooth lines of the Florentine style which had its appearance and development in Florence, Italy during the first part of the XV Century, within the great Renaissance period.



2370

"The Florentine" Chalice & Paten

(Matching Ciboria available).
Depicting the Four Evangelists and symbols around the cup, this filigree cloisonné fire enameled chalice and paten set is executed in solid 925 Sterling silver, Gold lined. A masterful job of hand engraving gives highlights to the enamel lines and the construction of the chalice represents the highest form of craftsmanship.

Measurements:

Height: 8 1/2"

Cup: 4 1/4"

Capacity: 12 Oz.

Paten: 6 1/4" dia.



2724

Chalice & 6 1/4" dish paten

The "Florentine", a delicate deep relief repoussé work featuring Grape and Flower of Passion design.

7 7/8" Ht. - 4 1/8" Cup - 12 Oz.

Brass Gold Plated

Inner Cup Sterling Silver

1844
Chalice & 6 1/4" Dish paten

Embossed ornamentation
7 1/2" Ht. - 4 1/4" Cup - 14 Oz.
Brass Silver Plated, G/L
Inner Cup Sterling, G/L
All Sterling Silver, G/L



2936
Chalice & 6 1/4" scale paten With Ring

With four fire enamel medallions depicting the Four Evangelists.
9" Ht. - 3 3/8" Cup - 8 Oz.
Brass Gold Plated
Inner Cup Sterling, G/P
All Sterling Silver, G/P



2340
Chalice & 6 1/2" Scale paten "E"

Delicate grape & wheat ornamentation with four custodian angels on stem.
7 1/2" Ht. - 4 1/2" Cup - 10 Oz.
Goldplated
Inner Cup Sterling, g/p
All Sterling Silver, g/p



2341
Ciboria
9 1/2" Ht. - 5 1/8" Cup - 325 Hosts.
Goldplated
Inner Cup Sterling, g/p
All Sterling Silver, g/p

PLATERESQUE COLLECTION

Influenced by the Italian Renaissance movement and the Florentine artists that came to work for the Spanish Crown, the Plateresque style develops itself as a genuine independent Spanish style through the XV-XVI Centuries.

The pieces here illustrated are a worthy example of this pure Spanish style of clean lines and elegant presence.



2376

"The Plateresque" Chalice & Paten

Height: 8 7/8"

Cup: 3 1/4" - Capacity: 10 Oz.

Sterling Silver



2920-02

Page 103



2376-01

Ciboria

10 1/2" Ht. - 4" Cup - 110 hosts

Sterling silver, g/l



2920

Chalice & 5 1/2" Scale paten

Plateresque style, adorned with enamelled cabochons.

9 1/4" Ht. - 3 1/2" Cup - 10 Oz.

Brass Silver plated

Inner cup Sterling



2920-01

Ciboria

Oversize Ciboria matching with our 2920 chalice, featuring fire enamel cabochons and chiselled decoration on main body and lid. 11 5/8" Ht - 7" Dia - 1500 hosts. Brass, silver plated



2921

Ciboria

10 1/8" Ht. - 4" Cup - 150 Hosts.

Brass Silver plated

Inner cup Sterling

EASTERN RITE SETS



AS-144

Eastern-Rite Set, featuring the Pantocrator and symbols of the Four Evangelists. Chalice is 9 1/2" Ht. - 3 1/2" Cup - 12 Oz. Complete Set in brass Gold Plated Complete Set in Sterling Silver

Brass Gold Plated Sterling Silver

Chalice
Discoss
Asterisk
Lance
Spoon

AS-145

Byzantine chalice, pedestal paten, asterisk, knife and spoon, two tone finish. Chalice is 9 1/2" Ht. - 3 3/4" Cup - 10 Oz. Complete Set, brass two tone Complete Set, Sterling Silver

Brass Two Tone Sterling Silver

Chalice
Discoss
Asterisk
Lance
Spoon



AS-107

Hand engraved Byzantine cross, finished in heavy 24 Karat Gold Plate. 11 1/2" long x 5" wide



5085

Eastern-Rite Set. Classic lines, smooth high gloss Gold Plate finish. Comprises chalice, pedestal paten, asterisk, knife and spoon. Chalice is 9 1/2" Ht. - 3 1/2" Cup - 8 Oz. Complete Set, brass Gold Plated Chalice, brass Gold Plated Pedestal Paten, brass Gold Plated Asterisk, brass Gold Plated Lance, brass Gold Plated Spoon, brass Gold Plated

BAROQUE COLLECTION

During the 17th century and the beginning of the 18th century, the baroque represents a moment in Western culture in which the affirmation of nationalities and the tension produced by the Reformation and Counter-Reformation coincide. An interest for the monumental, the surprising and the dazzling arises. It is also the art in which the movement and the theatrical tension are most successfully produced.

All the pieces in this collection offer you multiple possibilities to enrich your liturgy and complement your church interior in this beautiful style.

2502

Chalice & 6 1/4"

Scale paten With Ring

Deep relief repoussé work with fire enamel medallions representing The Holy Family. The Sacred Heart of Mary & The Sacred Heart of Jesus.

Chalice is 9 1/4" Ht. - 3 3/4" Cup - 10 Oz.

Sterling Silver



2502-1

Ciboria

Ciboria is 9 1/2" Ht. - 4 1/2"

Cup 200 Hosts.

Sterling Silver

AS-199-1

Ciboria

Matching ciboria. 10 1/2" Ht. - 5" Cup - 250 Hosts.

Inner Cup Sterling
Sterling Silver

AS-199

Chalice & 6 1/4"

Scale paten With Ring

Rich baroque ornamentation, finished in two tone (Gold and Silver).

9 1/4" Ht. - 3 3/4" Cup - 11 Oz.

Inner Cup Sterling
Sterling Silver



AS-199-2

Open Ciboria

3 3/4" Ht - 6 1/4" Cup - 200 Hosts.

Two tone
Inner Cup Sterling





2425

Chalice & 6 1/4" scale paten with ring

Masterfully executed interpretation of the baroque style featuring high relief embossing and a multi pointed, star shaped base which reflects the degree of ability achieved by our craftsmen.

Height: 9 1/4" Cup Ø: 4" Capacity: 15 Oz.
Inner Cup Sterling, g/p
All sterling silver, g/p



AS-151

Chalice & 6" Scale paten

Baroque design, featuring fluted ornamentation on base.

9 1/2" Ht. - 3 5/8" Cup - 8 Oz.

Brass Gold plated

Inner Cup Sterling, G/P

All Sterling Silver, G/P



2501

Chalice & 6 1/4" scale paten

Exquisite embossed Baroque ornamentation finished in extra heavy gold plating

9" Ht. - 3 3/8" Cup - 10 Oz.

Brass G / P

Inner Cup Sterling

Sterling Silver



2501-1

Ciboria

9 1/2" Ht. - 3 1/2" Cup - 10 Oz.

Brass G / P

Inner Cup Sterling

Sterling Silver

2915

Chalice & 5 3/4" scale paten

7 3/4" Ht. - 3 3/4" Cup - 13 Oz.

Silver or Gold Plated

Two tone finish

Sterling Silver



2915-1

Ciboria

8 3/4" Ht. - 5 1/4" Cup - 275 Hosts.

Silver or Gold Plated

Two tone finish

Sterling Silver

AS-152

Chalice & 6" scale paten

Rich baroque design, featuring medallions of the four Evangelists on base.

10" Ht. - 3 1/2" Cup - 8 Oz.

Brass Gold plated

Inner Cup Sterling

All Sterling Silver,



CLASSIC COLLECTION

Apart from the classic Romanesque, Gothic and Baroque styles, there is a wide spectrum open to the creativity of our silversmiths within classic design. The creations you will find on the following pages, although not falling within any specific style, offer great beauty and spirituality in their whole and will surely become an interesting option to enrich your liturgy.

1862
Chalice & 6 1/4"

Dish paten
Hand chased "Rope" design on node and base.
7 3/8" Ht. - 4 1/8" Cup - 12 Oz.
Brass Silver Plated
Cup Sterling
All Sterling



1856
Chalice & 6 1/4"

Dish paten
Traditional design with hand embossed fluted work.
7" Ht. - 4" Cup - 13 Oz.
Brass Silver Plated
Inner Cup Sterling Silver



1852
Chalice & 6 1/4"

Dish paten
Fine hand engraved "Crown of Thorns" motif. Entirely hand hammered.
6 7/8" Ht. - 4 3/4" Cup - 14 Oz.
Brass Gold Plated
Cup Sterling Silver



2925
Chalice & 6 1/2" Bowl paten
High gloss hand hammered finish, with genuine black onyx node. Completely gold plated.
7 1/2" Ht. - 4 1/2" Cup - 22 Oz.
Brass Gold Plated
Cup sterling G/P



2484
Chalice & 5 3/4" Scale Paten
Cross on base.
6 1/4" Ht. - 4" Cup - 12 Oz.
Silver Plated or Gold Plated



2485
Ciboria
7 1/4" Ht. - 4 1/8" Cup
200 Hosts.
Brass Silver Plated or Gold Plated



2848
Chalice & 6 1/2"
Bowl paten
Deeply chased Grape and Leaf design on base. Black highly polished node with beaded ring.
6 7/8" Ht. - 4 3/4" Cup - 20 Oz.
Brass silver plated
Cup Sterling Silver
All Sterling Silver



2924
Chalice & 6 1/4" Dish Paten
Traditional English style, light hand hammering overall and royal blue enamelled cross.
8" Ht. - 4 1/4" Cup - 12 Oz.
Silver Plated
Cup Sterling Silver
All Sterling Silver



2860
Chalice & 6 1/4" Dish paten
Classic hexagonal base. Entirely hand hammered. Black node with inlaid Crown of Thorns band.
7 3/4" Ht. - 4 3/8" Cup - 15 Oz.
Brass Silver Plated
Cup sterling



2584
Chalice & 6 1/2" Bowl paten
Hand engraved Last Supper design. Silverplated finish, lightly oxidized to enhance design. Gold lined cup.
6" Ht. - 4 1/2" Cup - 18 Oz.
Inner Cup Sterling Silver
All Sterling Silver



1894
Chalice & 5 3/4"
Scale paten
Hand-hammered
cup and base.
7 7/8" Ht. - 4 1/4"
Cup - 14 Oz.
Silver or gold plated



1895
Matching Ciboria
Available in two sizes:
A and B.
A 9 1/8" Ht. - 4 3/4"
Cup - 350 Cap.
B 6 3/4" Ht. - 3"
Cup - 100 Cap.



2684
Chalice & 6" Bowl Paten
Enamelled Last Supper
ornamentation.
6 3/4" Ht. - 4" Cup - 14 Oz.
Brass Silver Plated



2350
Chalice & 6 1/4" Dish paten
Classic Grape and Leaves motifs on collar
and base. Red enamelled node.
7 3/4" Ht. - 4 1/2" Cup - 14 Oz.
Silver Plated
Inner Cup Sterling, g/1
All Sterling Silver



2590
Chalice & 6" bowl paten
Repoussé work on node, hand
hammered overall, with green
enamelled cross applied on base.
7" Ht. - 4 5/8" Cup - 16 Oz.
Brass two tone
Cup Sterling Silver
All Sterling Silver



2955
Chalice & 6 1/2" bowl paten
Featuring the Last Supper motif.
6 1/2" Ht. - 4 1/4" Cup - 17 Oz.
Brass Two Tone finish

Inner Cup Sterling Silver, Two Tone



2922
Chalice & 6 1/2"
Bowl paten
Artistic grapevine design.
Red fire enamelled cross on base.
7 1/4" Ht. - 4 3/4" Cup - 22 Oz.
Brass two tone
Inner Cup Sterling
All Sterling Silver



2652
Chalice & 6 1/4"
Dish paten
Traditional style, hand
hammered overall, high
polish silver plate finish.
Black enamelled cross and node.
7 1/4" Ht. - 4" Cup - 12 Oz.



2653
Ciboria
Traditional style, hand
hammered overall, high
polish silver plate finish.
Black enamelled cross
and node.
8 5/8" Ht. - 350 Cap.



1848
Chalice & 6 1/4" Dish paten
Node with grape motif.
7 3/8" Ht. - 4 1/2" Cup - 15 Oz.
Brass g/p.
Cup Sterling Silver

2750
Chalice and 6 1/4" dish paten
Fully hand made construction throughout featuring a chiseled base and hammered node. Two Tone finish (Gold & Silver)
6 3/4" Ht. - 4 1/8" Cup 11 Oz.
Brass
Cup Sterling
All Sterling Silver



2752
Open Ciboria
Two Tone finish
3 1/2" Ht. - 5 1/4" Cup - 175 hosts
Brass
Cup Sterling
All Sterling Silver



2751
Ciboria
Two Tone finish
7 3/8" Ht. - 4 5/8" Cup - 175 hosts
Brass
Cup Sterling
All Sterling Silver



NEW

2205
Chalice only
Elegant design featuring four delicately set lapis lazuli cabochons on the base.
7 1/4" Ht. - 4 15/16" Cup - 20 Oz.
Brass Silver Plated



NEW

2207
Open ciboria
3 5/8" Ht. - 5 7/8" Cup - 275 hosts
Brass Silver Plated



NEW

2206
Ciborium
7 7/8" Ht. - 4 5/8" Cup - 200 hosts
Brass Silver Plated



NEW

2212
Open Ciboria
3 9/16" Ht. - 6 3/4" Cup - 375 hosts
Brass Silver Plated



NEW

2211
Ciborium
8 5/8" Ht. - 4 5/8" Cup - 200 hosts
Brass Silver Plated



NEW

2210
Chalice only
Contemporary design chalice with two tone node.
7 7/8" Ht. - 4 1/2" Cup - 16 Oz
Brass Silver Plated



NEW

2215
Chalice only
7 1/2" Ht. - 4" Cup - 13 Oz
Brass Silver Plated



NEW

2217
Open Ciboria
3 3/4" Ht. - 5 1/4" Cup - 225 hosts
Brass Silver Plated



NEW

2216
Ciborium
9 1/4" Ht. - 4" Cup - 150 hosts
Brass Silver Plated



NEW

2220
Chalice only
7 5/8" Ht. - 4" Cup - 15 Oz
Brass Silver Plated



NEW

2222
Open Ciboria
3 15/16" Ht. - 6 3/4" Cup - 375 hosts
Brass Silver Plated



NEW

2221
Ciborium
8 1/4" Ht. - 4 5/8" Cup - 200 hosts
Brass Silver Plated



NEW

2225
Chalice only
7 1/16" Ht. - 4 3/4" Cup - 14 Oz
Brass Silver Plated



NEW

2227
Open Ciboria
4 3/8" Ht. - 6" Cup - 375 hosts
Brass Silver Plated



NEW

2226
Ciborium
8" Ht. - 4 5/8" Cup - 200 hosts
Brass Silver Plated



CONTEMPORARY COLLECTION

Since the Vatican II, our company developed a wide array of liturgical pieces with the object of satisfying the requirements imposed. A broad offer of chalices blending attractive design and balanced proportions are here presented, further enhanced by our high degree of production quality.



2948
Chalice & 6 1/4" Dish paten
Hand engraved images and names of the Twelve Apostles.
7 1/8" Ht. - 4 3/8" Cup - 16 Oz.
Brass silver plated
Inner Cup Sterling



2948-2
Open ciboria
4 1/4" Ht. - 5 1/4" Cup
300 Hosts
Silverplated,
gold lined
Inner Cup
Sterling



2948-1
Ciboria
7 1/2" Ht. - 4 1/2" Cup -
250 Hosts
Silverplated,
gold lined
Inner Cup
Sterling



1878
Chalice & 6 1/4" dish paten
Lightly hand-hammered.
Cut-out fish symbol on node.
7 1/4" Ht. - 4 1/8" Cup - 12 Oz.
Matching Ciboria



2736
Chalice & 6 1/2" bowl paten
The "Bavarian", a version of "Tassilo" chalice, hand hammered overall.
7 1/8" Ht. - 4 1/4" Cup - 18 Oz.
Entirely Gold Plated
Cup Sterling Silver
All Sterling Silver

AS-176-2
Open ciboria
4 1/8" Ht. - 6 1/16" Cup - 300 Hosts.
Brass Silver Plated, Gold lined



AS-176-1
Ciboria
7 1/2" Ht. - 4 1/2" Cup - 250 Hosts
Brass Silver Plated, Gold lined
Inner Cup Sterling Silver

AS-176
Chalice & 6 1/4" Dish paten
Last Supper with red enamel background.
6 7/8" Ht. - 4 1/8" Cup - 19 Oz.
Brass Silver Plated, Gold lined.
Inner Cup Sterling



2712
Matching Open Ciboria
3 3/4" Ht. - 6 5/8" Cup. 325 hosts
Brass, Two tone
Also available in small size:
2 5/8" Ht. - 5 3/8" Cup. 250 hosts
Brass, Two tone



2710
Chalice only (no paten)
Elegant contemporary design finished in flawless two tone.
6" Ht. - 4 1/2" Cup. 15 Oz
Brass, Two tone



AS-154
Chalice & 6 1/4" dish paten
Last Supper and ornamental bands on base and node in cloisonné fire enamel.
8 1/16" Ht. - 4" Cup - 14 Oz.
Brass Silver Plated, Gold lined.
Inner Cup Sterling Silver
All Sterling Silver



AS-154-2
Open ciboria
3 1/2" Ht. - 6 5/8" Cup - 400 Hosts.
Brass Silver Plated,
Gold lined

AS-154-1
Matching Ciborian
(Not shown)
9 1/4" Ht. - 4 7/8" Cup - 250 Hosts.
Brass Silver Plated,
Gold lined
Inner Cup Sterling Silver



2705
Chalice & 6" Bowl paten
Purple fire-enamelled cup
6 3/4" Ht. - 4 3/8" Cup - 14 Oz.
Cup Sterling Gold plated overall



2706
Matching Ciboria
6 3/4" Ht. - 4 3/4" Cup - 300 Hosts.
Cup Sterling Gold plated overall



2620
Chalice & 6" Bowl paten
Relief repoussé of Christ and the Apostles on red enamelled background. Celtic cross on base. 7 1/8" Ht. - 4 1/4" Cup - 16 Oz.
Brass silver plated
Inner Cup Sterling Silver
All Sterling Silver



2854
Chalice & 6 1/4" Dish paten
Soft hand hammering on cup and base. Node with fish & loaf motif. 7" Ht. - 4 1/2" Cup - 20 Oz.
Brass Gold plated
Cup Sterling Silver, g/p



2923
Chalice & 5 3/4" Scale paten
Hand hammered cup, base featuring the Twelve Apostles. Two tone finish (gold and antique silver). 6 1/2" Ht. - 4 1/4" Cup - 14 Oz.



2820
Chalice & 6 1/2" Bowl paten
Lightly hand hammered. High polish silver plated finish. Hand engraved cross on base. 6 1/2" Ht. - 5" Cup - 20 Oz.
Brass Silver Plated
Inner Cup Sterling Silver
All Sterling Silver



2818
Chalice & 6" Bowl paten
Hand-chased "Drops of Blood" design. With red fire-enamelled background. Matching enamelled cross applied on base. 6 1/2" Ht. - 4 3/8" Cup - 14 Oz.
Brass Gold Plated
Inner Cup Sterling Silver

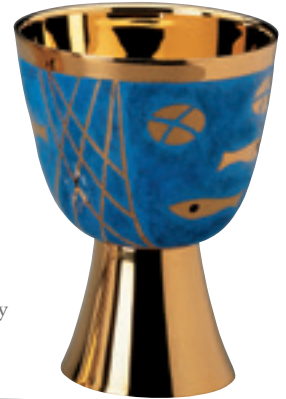


2756
Chalice & 6 1/2" Bowl Paten
The "Last Supper". Design with enamel. Node features grape motif. 7" Ht. - 4 1/2" Cup - 16 Oz.
Two Tone finish (Silver/Gold)
Cup Sterling Silver
All Sterling Silver



2940
Chalice & 6 1/4" Dish paten
Soft round hand hammered. Shiny silver finish, gold lined. 6 1/2" Ht. - 4 1/2" Cup - 15 Oz

1872
Chalice & 6 1/2" Bowl paten
Genuine cloisonné fire enamel. 6 1/4" Ht. - 4 3/4" Cup - 20 Oz
24 Karat Gold Plated



2819
Matching ciboria
7 5/8" Ht. - 4 7/8" Cup - 300 Hosts.
Red enamel brass, g/p
Inner Cup Sterling Silver

2550
"The Evangelists"
Chalice & 6 1/2" bowl paten
Deep relief repoussé work featuring the Evangelists. Raised cross on base. 7 1/8" Ht. - 4 1/2" Cup - 16 Oz.
Silver Plated
Inner Cup Sterling Silver
All Sterling Silver



2886
Chalice & 6 1/4" Dish paten
Three faceted node, featuring "Fish and Loaf" motif. Red enamel cross applied on base. Fully hand-hammered. 7" Ht. - 4" Cup - 15 Oz.



2960
Chalice & 6 1/2" Bowl paten
Raised cross motif with red enamel Corpus. 6 3/4" Ht. - 4 1/4" Cup - 17 Oz
Brass Goldplated
Inner Cup Sterling Silver, g/p

2400
Chalice & 6 1/4" Dish paten
Hand engraved fish, net and loaves motifs. 7" Ht. - 4 1/4" Cup - 16 Oz.
Silver Plated, gold lined



2402
Open ciboria
3 3/4" Ht. - 5 5/8" Cup - 270 Hosts.
Silver Plated, gold lined



ENGRAVED DISH PATEN FOR ALL THESE ARTISTIC
STERLING COLLECTION CHALICES: Sterling Silver \$ 785

ARTISTIC STERLING COLLECTION

This collection, exclusively executed in Sterling Silver has been developed in various styles to offer our articles in this noble material at the most competitive price. The purchase of the paten, also made in sterling silver, consolidates the value of each of the different chalice & paten sets.



1017
Chalice Only
Classic, clean line design, with red stone setting applied cross on base. Natural "Rainbow Obsidian" stone node with hexagonal faceted cut.
8 3/8" Ht. - 4 1/4" Cup - 13 Oz.
All Sterling Silver
Matching Ciboria



1005
Chalice Only
Rich Gothic ornamentation.
8 1/4" Ht. - 4 1/8" Cup - 10 Oz.
All Sterling Silver
Matching Ciboria



1002
Chalice Only
Fully hand hammered, genuine sodalite stone knob (rich blue color) blue enamel Chi-Rho.
7 1/2" Ht. - 4 1/4" Cup - 17 Oz.
Sterling Silver
Matching Ciboria



1006
Chalice Only
Open filigree work knob, finished in two tone, lightly hand hammered.
7" Ht. - 4 5/8" Cup - 16 Oz.
Sterling Silver



1006-01
Matching ciboria
8 3/8" Ht. - 4 5/8" Cup - 300 Capacity.
Sterling Silver

1016
Chalice Only
Node with sculptured wheat motif, fully hand hammered.
7 1/8" Ht. - 4 5/8" Cup - 14 Oz.
All Sterling Silver
Matching Ciboria



1000-01
Matching ciboria
9 1/4" Ht. - 4 7/8" Cup - 250 Capacity.
All Sterling Silver

1000
Chalice Only
Hand engraved images of the Apostles and symbols of the Evangelists.
7 1/2" Ht. - 4 7/8" Cup - 18 Oz.
All Sterling Silver



1010
Chalice Only
Hand chased grape ornamentation, knob in genuine moss agate stone (green).
7 3/4" Ht. - 4 5/8" Cup - 15 Oz.
Sterling Silver
Matching Ciboria



1019
Chalice Only
Hand chased "Rope" motif on node with engraved cross on base. Fully hand hammered, goldplated finish.
7 5/8" Ht. - 4 1/2" Cup - 14 Oz.
All Sterling Silver
Matching Ciboria



1001
Chalice Only
Lightly hand hammered with embossed "Rope" design on base.
7 1/2" Cup - 4 1/2" Cup - 15 Oz.
All Sterling Silver
Matching Ciboria



1018
Chalice Only
Fine straw hammering, with "Last Supper" knob, hand engraved cross on base.
6 3/4" Ht. - 4 1/2" Cup - 19 Oz.
Sterling Silver



1018-1
Matching Ciboria
8 7/8" Ht. - 4 7/8" Cup - 300 Capacity
Sterling Silver

1015
Chalice Only
Soft round hand hammering finished either in high gloss goldplating or shiny silver. Alpha & Omega symbol in fire enamel.
6 3/4" Ht. - 4 3/4" Cup - 20 Oz.
All Sterling Silver
Matching Ciboria

1014
Chalice Only
Fully hand hammered, with genuine sodalite stone node. Lamb motif applied on base, with fire enamel.
7" Ht. - 4 1/2" Cup - 14 Oz.
All Sterling Silver
Matching Ciboria



1008
Chalice Only
Deeply tooled wheat & grape ornamentation.
7 5/8" Ht. - 4 3/4" Cup - 19 Oz.
Sterling Silver
Matching Ciboria



1013
Chalice Only
Hand engraved "Tassilo" chalice.
7" Ht. - 4 1/8" Cup - 15 Oz.
All Sterling Silver
Matching Ciboria

ENGRAVED DISH PATEN FOR ALL THESE ARTISTIC STERLING COLLECTION CHALICES: Sterling Silver \$ 785

COMMUNION SETS



1820
Chalice & 6 1/4" Dish paten
 Heavy gauge with soft hand hammered finish.
 8" Ht. - 4 1/2" Cup - 16 Oz.
 Silver Plated, Gold Plated inside
 Cup Sterling
 Sterling Silver



1823
Ciboria
 Matching ciboria.
 9 1/4" Ht. - 4 7/8" Cup - 400 Hosts.
 Silver Plated, gold lined
 Sterling Silver



1825
Flagon
 Completely hand hammered with "V" symbol to facilitate opening of lid. 11" Ht.
 Silver Plated, gold lined
 Sterling Silver



1839
Flagon
 11" Ht. - 1 1/2" Qt.
 Silver Plated, gold lined
 Sterling Silver

1836
Chalice & 6 1/4" Dish paten
 Fine hand engraved Wheat & Grape design. Delicately hand engraved braidwork around node and hexagonal base.
 7 1/2" Ht. - 4 1/8" Cup - 12 Oz.
 Silver Plated, Gold lined
 Cup Sterling
 Sterling Silver

1838
Ciboria
 8 5/8" Ht. - 4 3/8" Cup - 300 Hosts.
 Silver Plated, gold lined
 Sterling Silver



5070-F
Flagon
 10 1/4" Ht. - 1 Qt.
 Silver Plated, gold lined

5070-C
Chalice
 7" Ht. - 4 1/8" Dia. - 14 Oz.
 Silver Plated, gold lined



5070-P
Paten
 7 1/2" Dia.
 Silver Plated, gold lined



5070-B
Host Box
 4 1/8" Ht. - 4 3/4" Dia. - 325 Hosts.
 Silver Plated, gold lined



5070 SET ENTIRELY HAND HAMMERED WITH HIGH POLISH FINISH.
 BRASS SILVER PLATED, GOLD LINED.

2767
Open Ciboria
3 7/8" Ht. - 6" Cup - 300 hosts
Brass Silver Plated



2765
Chalice only
Hand chiselled throughout.
7" Ht. - 4 3/4" Cup - 13 Oz.
Brass Silver Plated



2770
Chalice only
Hand chiselled throughout.
7" Ht. - 4 3/8" Cup - 10 Oz.
Brass Silver Plated



2772
Open Ciboria
4" Ht. - 5 1/4" Cup
225 hosts
Brass Silver Plated

2777
Open Ciboria
4" Ht. - 6 5/8" Cup - 300 hosts
Brass Silver Plated



2775
Chalice only
Hand chiselled base.
7" Ht. - 4 5/8" Cup 13 Oz.
Brass Silver Plated



2782
Open Ciboria
4 3/8" Ht. - 6 1/2" Cup - 300 hosts
Brass Silver Plated



2780
Chalice only
Smooth base with hand hammered cup
8" Ht. - 4 5/8" Cup 16 Oz.
Brass Silver Plated

LARGE CIBORIA



2920-01
Ciboria
Oversize Ciboria matching with our 2920 chalice, featuring fire enamel cabouchons and chiselled decoration on main body and lid.
11 5/8" Ht - 7" Dia - 1500 hosts.
Brass, silver plated



1127
Ciboria with lid. High relief, hand chiselled wheat design.
7 7/8" Ht. - 7" Dia. - 750 hosts
Brass, Silverplated, gold lined



1128
Ciboria with lid. Elegant, classic lines, with fine hammered textured band on cup and base.
7 5/8" Ht. - 7" Dia. - 750 hosts
Brass, Silverplated, gold lined

AS 193
Ciboria
Richly ornamented, featuring five fire enamel medallions depicting the Four Evangelists and the IHS symbol.
13 1/2" Ht. - 7 1/4" Dia - 750 hosts.
Brass, Silverplated, gold lined



1129
Ciboria with lid. Fine hand hammered, lightly oxidized decoration on main body and lid.
8 5/8" Ht. - 7" Dia. - 750 hosts
Brass, Silverplated, gold lined

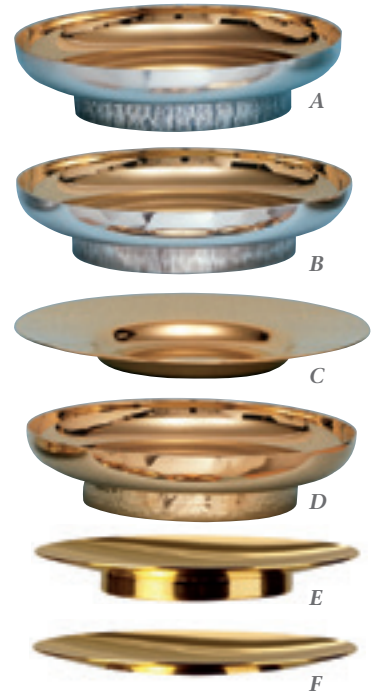


1130
Ciboria with lid. Featuring fully enamelled main body (red) topped with a hi polish, gold plated lid.
8 5/8" Ht. - 7" Dia. - 750 hosts
Brass, Goldplated

COMMUNION SETS

1815
Stacking ciboria
Hand engraved wheat and grape motifs, gold plated.
Each bowl is 6 1/4" diameter, 450 Hosts capacity
Each bowl Lid only

2927-01
Ciboria
6 1/4" Ht. - 6 3/4" Dia.
500 Hosts.



1816
Matching Chalice
(no paten) :
6 7/8" Ht. 4 5/8" Cup 16 Oz.
Entirely gold plated with hand engraved motif

A/B/D
Footed bowl type patens, with hand hammered texture on rings. High quality finish, silver plated and gold lined.
6" Dia.
6 1/2" Dia.
7" Dia.

C
Dish type patens. Smooth finish.
5 1/2" Dia.
6 1/4" Dia.
7" Dia.

E
Scale patens with ring. Smooth finish
5 1/2" Dia.
6 1/4" Dia.
7" Dia.

F
ATM scale paten.
5 3/4" Dia.

2927-05
Principal chalice
7 1/2" Ht. - 4 5/8" Dia. - 24 Oz.
Without pouring lip, brass goldplate
Fitted with pouring lip, brass goldplate



1800
Small chalice
4 5/8" Ht. - 2 5/8" Cup.
6 Oz
Brass Silverplated,
gold lined
Sterling Silver,
gold lined

2927-03
Serving Cup: 6 1/8"
Ht. - 4 1/8".
Dia. - 14 Oz.

2927
COMMUNION SET
IN BRASS
GOLDPLATED WITH
HIGH POLISH FINISH.



2927-04
Flagon with glass liner, finial cross with grape motif.
9 1/4" Ht. - 3 1/2" Dia. - 24 Oz.

2927-02
Serving Bowl: 1 3/4" Ht. - 6 1/2"
Dia. 350 Hosts

2927-06
Large Open Ciboria
Large Serving Bowl: 2 1/4"
Ht. 8" Dia.
800 Hosts



1800-01
Small ciboria
50 Hosts capacity,
5" Ht. 2 3/4" Dia.
Brass Silverplated,
gold lined
Sterling Silver,
gold lined



1806
Small Ciboria
Brass Silverplated
Sterling Silver



1805
Small Ciboria
Brass Silverplated
Sterling Silver



1804
Small Ciboria
Brass Silverplated
Sterling Silver



1803
Small Ciboria
Brass Silverplated
Sterling Silver



1802
Small Ciboria
Brass Silverplated
Sterling Silver



1801
Small Ciboria
Chiseled by hand
5" Ht. - 3 3/4" Ø 75 H.
Brass Silverplated
Sterling Silver

COMMUNION SETS



2100
Principal chalice
& **6 1/4" dish paten**
Hand hammered cup, base with grape and wheat motif.
6 1/2" Ht. - 4 1/8" Cup - 14 Oz.

2100-1
Serving chalice
Hand hammered cup, with raised grape & wheat motif on base
Hammering marks showing inside
5" Ht. - 3 1/4" Dia - 6 Oz.
Brass silverplate, g/l



2100-2
Small open ciboria
Hammering marks showing inside
4" Ht. - 5 1/4" Dia. - 300 Host.
Brass silverplate, g/l



2100-3
Large open ciboria
6" Ht. - 8 1/8" Dia. - 850 Host.
Brass silverplate, g/l



2923-3
Small open ciboria
Matching gold/antique silver finish.
4 1/2" Ht. - 6 5/8"
Dia. - 400 Host.

2923-2
Serving chalice only
Matching finish with principal chalice
5 1/2" Ht. - 4" Cup. 12 Oz

2923-1 **Principal chalice**
(Without paten)
Base featuring the "Twelve Apostles" in antique silverplated finish contrasting with the goldplate cup.
7 1/8" Ht. - 4 1/4" Cup. 16 Oz.

2923-4
Large open ciboria
5 5/8" Ht. - 8"
Dia. - 400 Host.



4018
Small bread plate
10" Dia. - 800 Hosts - 1 3/4" Ht..
Brass gold plate



4021
Serving chalice
5 3/4" Ht. - 4" Dia. - 12 Oz.
Brass gold plate



4022
Large chalice
10 Ht. - 5 1/2" Dia. 1 1/2" Qt.
Brass gold plate
Without pouring cup
With pouring cup



4019
Large bread plate
14" Dia. - 1,800 Hosts - 2 3/4" Ht.
Brass gold plate

4020
Flagon
10 1/2" Ht. - 5 1/2" Dia. 1 1/2" Qt.
Brass gold plate

COMMUNION SETS



4012
Stacking Ciboria
Set contains three open bowls plus
1 lid
Each bowl (300 Hosts)
Lid only
Set (900 Hosts) 8" Ht. - 6 1/4" Dia.



4007
Small chalice
5 1/2" Ht. - 3 1/2" Cup
Capacity: 8 Oz.
Brass silverplate, g/l



4011
Ciboria
Matching Ciboria, 250
Host capacity.
6 5/8" Ht. - 4 5/8"
Cup



4007-4008
Instinction Set

4008
Open Ciboria only
2 7/8" Ht. - 8" Dia.
Capacity 550 Hosts.



4010
Chalice & 6" Bowl paten
Heavy textured design,
featuring Grape and Wheat
motifs. Silver Plated, oxidized,
gold lined.
6 1/2" Ht. - 4 1/4" Cup - 16 Oz.



2025
Hand embossed cross design.
Chalice: 3 3/8" Ht. - 2 3/4" Cup.
Open Ciboria: 2" Ht. - 6" Dia. - 200 Hosts.
Brass Silver Plated, Gold lined



2067 S - 2067 L
Open ciboria. Hand hammered.
5 1/8" Dia. - 170 Hosts
6 3/4" Dia. - 300 Hosts



2108
Hand chased wicker motif.
Chalice: 3 1/4" Ht. - 2 5/8" Cup.
Open Ciboria: 2 1/4" Ht. - 6 3/4" Dia. 250 Hosts.
Brass Silver Plated, Gold lined



2127
Hand hammered set.
Chalice: 3 3/8" Ht. - 3" Cup.
Open Ciboria: 1 3/4" Ht. - 6 7/8" Dia.
200 Hosts.
Brass Silver Plated, Gold lined

2128
Fine "straw" hammering.
Chalice: 4 3/4" Ht. - 3" Cup
Open Ciboria: 1 3/4" Ht. - 6 7/8"
Dia. 200 Hosts.
Brass Silver Plated, Gold lined



2144
Last Supper with red fire
enamel background.
3 3/4" Ht. - 6 1/4" Dia.
300 Hosts.
Brass Silver Plated,
Gold lined



2167
Open Ciboria. Wicker texture.
2 1/4" Ht. - 6 1/8" Dia. 300 Hosts.

COMMUNION SETS



5296
Ciboria
7 3/4 " Ht. 4 5/8" Cup
150 Hosts
Brass Gold Plated

5295
Chalice only
6 7/8 " Ht. 4 1/8" Cup
11 Oz.
Brass Gold Plated

5295-01
Serving Chalice
5 1/2 " Ht. 3 3/4" Cup
8 Oz.
Brass Gold Plated



5297
Open Ciboria
4 1/2 " Ht. 6 5/8" Cup
250 Hosts

5297-01 (Not shown)
Large Open Ciboria
5" Ht. 8 1/8" Cup
400 Hosts
Brass Gold Plated



5240-01
Serving Chalice
6 1/4" high x 3 5/8" Cup. 8 Oz.
Brass Goldplated

5240
Principal Chalice
7 1/4" high x 4" Cup. x 12 Oz. Cap.
Brass Goldplated

5535
Stacking Ciboria set
8 1/4 " Ht. 6 1/4 Ø.
3 Ciboria & 1 Lid.
Brass Gold Plated
Each bowl, 2 1/4 " Ht.
G/P, 400 Hosts
Lid Only, G/P



5563
Flagon
11 3/4" Ht. 4 1/2" wide. 46 Oz.
Heavy silverplate, G/L.



5561
Ciboria
6 3/4" Ht. 4 1/8" Cup.
200 Hosts.
Heavy silverplate, G/L.



5564
Dish Paten
7" Dia.
S/P, G/L.



5560
Chalice only
5 3/4" Ht. 3 3/4" Cup 8 Oz.
Heavy silverplate, G/L.



5562
Host Box
3 3/4" Ht. 3 5/8" dia.
300 Hosts
Heavy silverplate, G/L

COMMUNION SETS



5060
Chalice & Scale Paten
Rich Gothic ornamentation, with medallions featuring the Sacred Heart, St. Mary and St. Joseph with Baby Jesus
8" Ht. 4 1/4" Cup.
Dia 12 Oz
Brass Gold Plated
Inner Cup Sterling Silver, Gold Plated



5060-1
Chalice only
6 5/8" Ht. - 3 1/2" Cup
8 Oz.
Brass Goldplated.



5061-1
Ciboria
7 1/4" Ht. - 3 3/4" Cup -
100 hosts
Brass Goldplated.



5062-1
Open Ciboria
3 1/2" Ht. - 5 3/8" Cup -
175 hosts
Brass Goldplated.



5275-1
Serving Chalice
5 5/8" high x 3 1/4" Cup. x 8 Oz.
Brass Goldplated



5275
Principal Chalice
7 1/4" high x 4 1/8" Dia. x 14 Oz. Cap.
Brass Goldplated
Brass Goldplated, with pouring lip.



5285
Chalice only
7 1/8" Ht. 4 1/8" Cup.
14 Oz.
Brass Goldplated.

5287
Open Ciboria
5 3/8" Ht. 6 5/8" Cup.
250 Hosts
Brass Goldplated.
5287-01 (Not shown)
Open Ciboria
6" Ht. 8 1/8" Cup.
800 Hosts
Brass Goldplated.

5285-01
Serving Chalice
6 1/2" Ht. 4 1/8" Cup.
10 Oz.
Brass Goldplated.



5250
Stacking Ciboria
Each bowl is 6" high x 7 1/4" Dia x 1.000 host.
Price per bowl,
Brass Goldplated
(without lid) Lid only,
Brass Goldplated



5255
Large Ciboria
7 1/4" high x 7 1/4" Dia. x 1.000 hosts
Brass Gold Plated



5300
Stacking ciboria & lid set
Elegant design with great capacity and stability, stacking up safely up to 5-6 units complete with lids. Convenient round handle to secure Ciboria firmly during Eucharist and smart crossed knob to detach lid from bowl. Sold only as a Ciboria + lid set.
Height: 2" Dia: 6" Capacity: 250 hosts
Gold plated



5061 Ciboria
9" Ht. 4 7/8" Cup. Dia
270 Hosts
Brass Gold Plated



5062
Open ciboria
4 1/8" Ht. 5 7/8" Cup. Dia
350 Hosts
Brass Gold Plated



5060
Chalice & Scale Paten
Rich Gothic ornamentation, with medallions featuring the Sacred Heart, St. Mary and St. Joseph with Baby Jesus
8" Ht. 4 1/4" Cup. Dia 12 Oz
Brass Gold Plated
Inner Cup Sterling Silver, Gold Plated



5040
Chalice & Scale Paten
Hand chiselled baroque ornamentation. Base featuring medallions representing the Sacred Family.
8 7/8" Ht. 3 1/4" Cup. Dia 7 Oz
Brass Gold Plated
Inner Cup Sterling, g/p



5042
Open ciboria
4 1/2" Ht. 5 3/4" Cup. Dia
350 Hosts
Brass Gold Plated



5041 Ciboria
9 5/8" Ht. 4 1/8" Cup. Dia 220 Hosts
Brass Gold Plated



5221 Ciboria
9" Ht. 4 7/8" Dup Dia.
275 Hosts.
Brass Gold Plated,



5222
Matching Open Ciboria
4" Ht. 6 1/4" Cup Dia.
400 Hosts
Brass Gold Plated,

5220
Chalice & Scale Paten
Elegant design with deep relief "Grape & Wheat" motif on base and hand engraved band on cup
8 1/2" Ht. 4 5/8" Cup 16 Oz.
Brass Gold Plated
Cup Sterling Silver, Gold Plated



POPE FRANCIS COLLECTION

All items also available in silver plated finish

5400
Chalice & Scale Paten
Hand chiselled Gothic design resembling the great chalices of the past.
8 5/8" Ht. - 4 1/8" Cup 17 Oz.
Brass s/p
Brass g/p



5402
Open ciboria
3 1/2" Ht. - 6 3/4" Cup
350 hosts
Brass s/p
Brass g/p



5401
Ciboria
10 1/4" Ht. - 4 5/8" Cup
200 hosts
Brass s/p
Brass g/p



5410
Chalice & Scale Paten
Clean lines on this svelte, hand made chalice.
8 1/4" Ht. - 4 1/2" Cup 17 Oz.
Brass s/p
Brass g/p



5412
Open ciboria
3 1/2" Ht. - 6 3/4" Cup
350 hosts
Brass s/p
Brass g/p



5411
Ciboria
9 1/2" Ht. - 4 5/8" Cup
200 hosts
Brass s/p
Brass g/p



5415
Chalice & Scale Paten
Elegant creation featuring hand chiselled base with rope design
8 5/8" Ht. - 4 1/8" Cup 17 Oz.
Brass s/p
Brass g/p



5417
Open ciboria
3 1/2" Ht. - 6 3/4" Cup
350 hosts
Brass s/p
Brass g/p



5416
Ciboria
8 7/8" Ht. - 4 5/8" Cup
200 hosts
Brass s/p
Brass g/p



POPE FRANCIS COLLECTION

All items also available in silver plated finish

5420
Chalice & Scale Paten
Delicate hand hammered texture with light oxidized finish. Black acrylic node.
7 7/8" Ht. – 4 1/8" Cup 17 Oz.
Brass s/p
Brass g/p



5422
Open ciboria
3 1/2" Ht. – 6 3/4" Cup
350 hosts
Brass s/p
Brass g/p



5421
Ciboria
8 1/2" Ht. – 4 5/8" Cup
200 hosts
Brass s/p
Brass g/p



5425
Chalice & Scale Paten
Classic lines with hand chiselled "net" design on base.
7 7/8" Ht. – 4 1/8" Cup 14 Oz.
Brass s/p
Brass g/p



5427
Open ciboria
3 1/2" Ht. – 6 3/4" Cup
350 hosts
Brass s/p
Brass g/p



5426
Ciboria
8 1/4" Ht. – 4 5/8" Cup
200 hosts
Brass s/p
Brass g/p



5405
Chalice & Scale Paten
Classic and balanced design with hand chiselled "leaf" ornamentation.
8 1/2" Ht. – 4 1/8" Cup 14 Oz.
Brass s/p
Brass g/p



5407
Open ciboria
3 1/2" Ht. – 6 3/4" Cup
350 hosts
Brass s/p
Brass g/p



5406
Ciboria
9 7/8" Ht. – 4 5/8" Cup
200 hosts.
Brass s/p
Brass g/p





5200
Chalice & Scale Paten
Elegant, incised "Crown of Thorns" motif with Celtic superimposed cross on base.
8" Ht. 4 5/8" Cup. Dia 16 Oz
Brass Gold Plated
Cup Sterling Silver,
Gold Plated



5202
Open ciboria
5 1/8" Ht. 6 1/4" Cup. Dia
400 Hosts
Brass Gold Plated
without lid
Lid only available



5201
Ciboria
8" Ht. 4 5/8" Cup. Dia
300 Hosts
Brass Gold Plated,
Gold Lined



5236 Ciboria
8 5/8" Ht. 4 5/8" Cup Dia
250 Hosts
Brass Gold Plated



5237
Open ciboria
4" Ht. 6 1/4" Cup. Dia
400 Hosts
Brass Gold Plated



5235
Chalice & Scale Paten
Rich hand chiselled ornamentation
9 1/8" Ht. 3 5/8" Cup. Dia 12 Oz
Brass Gold Plated
Cup Sterling Silver,
Gold Plated



5190
Chalice & Scale Paten
Hand chiselled ornamentation
9 1/4" Ht. 4" Cup. Dia 14 Oz
Brass Silver Plated
Cup Sterling Silver,
Gold Lined



5192
Open ciboria
4" Ht. 6 1/4" Cup. Dia 425 Hosts
Brass Silver Plated



5191 Ciboria
8 1/4" Ht. 4 5/8" Cup.
Dia 250 Hosts
Brass Silver Plated

NOTE: SCALE PATENS ARE 5 3/4 " IN DIAMETER Brass Goldplated • PRICES SUBJECT TO CHANGE WITHOUT NOTICE
HAND CRAFTED IN SPAIN • Richly lined cases are available for most of our chalices



5211
Ciboria
8" Ht. 4 5/8" Cup. Dia
250 Hosts
Brass Silver Plated,
Gold Lined

5210
Chalice & Scale Paten
Modern hand-chased "Fish"
motif on node & base.
8 1/2" Ht. 4 7/8" Cup. Dia 15 Oz
Brass Silver Plated,
Gold Lined
Cup Sterling Silver,
Gold Lined

5212
Open Ciboria
4" Ht. 6 1/4" Cup. Dia
425 Hosts
Brass Silver Plated,
Gold Lined



5215
Chalice & Scale Paten
Classic design with hand engraved
"Flower of Passion" around cup and
Four Evangelists medallions on base.
9" Ht. 4 7/8" Cup. Dia 14 Oz
Brass Gold Plated
Cup Sterling Silver,
Gold Plated

5216 Ciboria
8" Ht. 4 5/8" Cup. Dia
250 Hosts
Brass Gold Plated

5217
Open Ciboria
4" Ht. 6 1/4" Cup. Dia
425 Hosts
Brass Gold Plated



5196
Ciboria
9" Ht. 4 5/8" Cup. Dia
300 Hosts
Brass Gold Plated

5197
Open ciboria
4" Ht. 6 1/4" Cup. Dia
425 Hosts
Brass Gold Plated

5195
Chalice & Scale Paten
Rich hand chiselled "Wheat & Grape"
ornamentation
9" Ht. 4 1/8" Cup. Dia 15 Oz
Brass Gold Plated
Cup Sterling Silver,
Gold Plated



5225
Chalice & Scale Paten
Hand chased
"Grape & Wheat" design.
9 3/8" Ht. 4 1/8" Cup Dia. 14 Oz
Brass Gold Plated
Cup Sterling Silver,
Gold Lined

5227
Open ciboria
4" Ht. 6 1/2" Cup Dia.
300 Hosts
Brass Gold Plated

5226
Ciboria
8 1/2" Ht. 4 5/8" Cup Dia.
250 Hosts
Brass Gold Plated



5230
Chalice & Scale Paten
Smooth, clean lines with soft
round hammering overall.
8 1/2" Ht. 5" Cup Dia. 18 Oz
Brass Gold Plated
Cup Sterling Silver,
Gold Lined

5232
Open ciboria
4" Ht. 6 1/2" Cup Dia.
300 Hosts
Brass Gold Plated

5231
Ciboria
8 1/2" Ht. 4 5/8" Cup Dia.
250 Hosts
Brass Gold Plated



5035
Chalice & Scale Paten
Fluted ornamentation,
cup adorned with angel
medallions.
8 1/8" Ht. 4 1/8" Cup. 10 Oz
Brass Gold plated
Cup Sterling Silver,
Gold Plated

5036
Ciboria
9 5/8" Ht. 4 1/8" Cup.
220 Hosts
Brass Gold Plated

5185
Chalice & Scale Paten
Hand engraved motifs of "Grapevine"
and "Flower of passion".
8 " High x 4 3/4" cup. 16 Oz
Cup sterling silver
5186 Matching Ciboria
5187 Matching Open Ciboria

5205
Chalice & Scale Paten
Cup with engraved symbols of The Three
Virtues. Base features symbols lamb, px
and dove.
8 1/8" High x 4 " cup. 14 Oz
Cup sterling silver
5206 Matching Ciboria
5207 Matching Open Ciboria



5350
Chalice & Scale Paten
8 1/4" height x 4 1/8" cup Ø
Brass Silver Plated
Inner cup sterling
silver, s/p



5352
Open Ciboria
4" height x 6 1/2" cup Ø
Brass Silver Plated



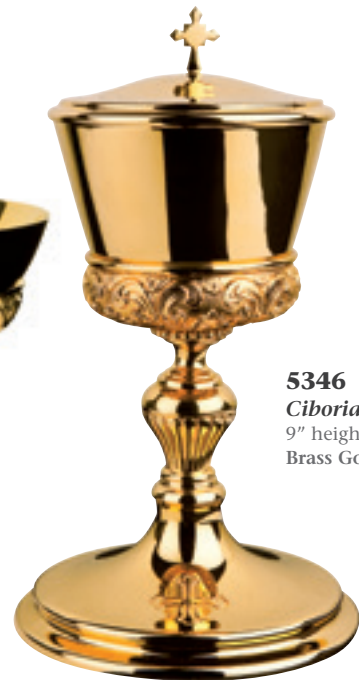
5351
Ciboria
9 3/8" height
5" cup Ø
Brass Silver Plated



5345
Chalice & Scale Paten
8" height x 4 1/8" cup Ø
Brass Gold Plated
Inner cup sterling
silver, g/p



5347
Open Ciboria
4" height
6 1/4" cup Ø
Brass Gold Plated



5346
Ciboria
9" height x 4" cup Ø
Brass Gold Plated



5360
Chalice & Scale Paten
7 1/8" height x 4" cup Ø
Brass Silver Plated
Cup Sterling Silver, g/



5362
Open Ciboria
4" height x 6 1/2" cup Ø
Brass Silver Plated



5355
Chalice & Scale Paten
6 3/8" height x 4" cup Ø
Brass Silver Plated,
Inner cup sterling
silver, s/p



5357
Open ciboria
4" height x 5 7/8" cup Ø
Brass Silver Plated



5005
Chalice & Scale Paten
Deep relief "Last Supper" 6"
Ht. 4 3/8" Cup. Dia. 12 Oz
Brass Silver Plated,
Gold Lined
Inner Cup Sterling,
Gold Lined

5007
Open ciboria
3 3/4" Ht. 5 1/2"
Cup. Dia. 325 Hosts
Brass Silver Plated,
Gold Lined

5006 Ciboria
7 1/8" Ht. 4 1/2" Cup. Dia.
270 Hosts
Brass Silver Plated,
Gold Lined



5010
Chalice & Scale Paten
Brass Silverplated.
Gold Lined
Featuring symbols of the
Four Evangelists. 6" Ht.
4" Cup. 10 Oz.
Inner cup sterling silver



5012
Open Ciboria
3 5/8" Ht. 4 1/8" Cup.
300 Hosts
Brass, Silverplated.
Gold Lined



5011
Ciboria
7" Ht. 4" Cup.
200 Hosts
Brass, Silverplated.
Gold Lined



5051 Ciboria
7 3/4" Ht. 4 1/2" Cup. 300 Hosts
Brass Silver Plated,
Gold Lined



5050 Chalice & Scale Paten
"Last Supper" design with Celtic
filigree work representing the Four
Evangelists Symbols
6 3/4" Ht. 4 1/2" Cup. Dia. 16 Oz
Brass Silver Plated,
Gold Lined
Inner Cup Sterling Silver,
Gold Lined

5052 Open ciboria
3 5/8" Ht. 6 1/4" Cup. Dia. 350 Hosts
Brass Silver Plated,
Gold Lined



**5050-C
Candlestick**
5 1/4" Ø
Brass silverplated
Brass goldplated

**5050-P
Wall Sanctuary Lamp**
5 1/8" in height
(glass globe not included)
Brass silverplated
Brass goldplated



**5050-L
Jug & Basin**
Jug: 4 1/2" height x 3 1/4" Ø
Bowl: 2 1/2" height x 6 1/4" Ø
Brass silverplated
Brass goldplated



**5050-T
Sanctuary Lamp**
5 1/8" in height
(glass globe not included)
Brass silverplated
Brass goldplated



**5370
Chalice & scale paten**
6 3/8" Ht. - 4" Cup. 13 Oz



**5371
Ciboria**
7 1/2" Ht. - 4 5/8" Cup.
175 hosts



**5372
Open Ciboria (large)**
3 3/4" Ht. - 6 3/4" Cup.
325 hosts



**5372.2
Open Ciboria (small)**
2 3/4" Ht. - 5 3/8" Cup.
250 hosts



5030
Chalice & Scale Paten
Red Enamel Finish
6 1/8" Ht.
4 1/8" Cup. Dia 11 Oz
Brass Gold Plated
Inner Cup Sterling Silver,
Gold Plated

5032
Open ciboria
Red Enamel Finish
2 3/4" Ht. 6 1/2" Cup.
Dia 300 Hosts
Brass Gold Plated



5031 Ciboria
Red Enamel Finish
5 7/8" Ht. 4 1/4" Cup. Dia
200 Hosts
Brass Gold Plated



5026 Ciboria
7" Ht. 4
3/8" Cup. Dia 280 Hosts
Brass Gold Plated



5025
Chalice & Scale Paten
Gold twisted "Wheat" motif
6" Ht. 4 3/8" Cup. Dia 16 Oz
Brass Gold Plated
Inner Cup Sterling Silver,
Gold Plated



5027
Open ciboria
3 3/4" Ht.
5 1/2" Cup. Dia 325 Hosts
Brass Gold Plated



5046 Ciboria
Hand engraved "Wheat"
design on cup
9 1/2" Ht. 4 1/8" Cup. Dia
220 Hosts
Brass Silver Plated,
Gold Lined



5047
Open ciboria
4 1/4" Ht. 5 3/8" Cup. Dia
325 Hosts
Brass Silver Plated,
Gold Lined



5045
Chalice & Scale Paten
Hand engraved "Grape"
design on cup and base
8 7/8" Ht. • 4 1/8" Cup Dia
10 Oz
Brass Silver Plated,
Gold Lined
Cup Sterling Silver,
Gold Lined



5001
Chalice & Scale Paten
"Wicker Work" texture
5 5/8" Ht. 4 3/8" Cup. Dia 16 Oz.
Brass Gold Plated
Inner Cup Sterling Silver,
Gold Plated



5003
Open ciboria
3 3/4" Ht. 5 1/2" Cup.Dia
325 Hosts
Brass Gold Plated



5002 Ciboria
6 7/8" Ht. 4 3/8" Cup. Dia
280 Hosts
Brass Gold Plated



5016 Ciboria
7" Ht. 4" Cup. Dia 200 Hosts
Brass Silver Plated,
Gold Lined



5017
Open ciboria
3 3/4" Ht. 5 3/8" Cup.Dia
310 Hosts
Brass Silver Plated,
Gold Lined



5015
Chalice & Scale Paten
Deeply Tooled Crucifixion Scene
6" Ht. 4" Cup. Dia 10 Oz
Brass Silver Plated,
Gold Lined
Inner Cup Sterling Silver,
Gold Lined



5021 Ciboria
7 1/4" Ht. 4 1/8" Cup.Dia
200 Hosts
Brass Gold Plated



5022
Open ciboria
3 3/4" Ht.
5 3/8" Cup.Dia 310 Hosts
Brass Gold Plated



5020
Chalice & Scale Paten
Bold "Crown of Thorns"
Motif
6" Ht. 4" Cup. Dia 10 Oz
Brass Gold Plated
Inner Cup Sterling Silver,
Gold Plated



5055
Chalice & Scale Paten
6 1/4" Ht. 4 1/2" Cup. 14 Oz.
Stainless Steel, Gold Lined.



5057
Open Ciboria
2 1/2" Ht. 6 3/8" Cup. 350 Hosts
Stainless Steel, Gold Lined.



5056
Ciboria
7" Ht. 4 3/4" Cup. 270 Hosts
Stainless Steel, Gold Lined.



5175
Chalice & Scale Paten
7 1/2" Ht. 4 1/8" Cup.
15 Oz.
Brass Goldplate,
Smooth finish.



5177
Open Ciboria
4 1/4" Ht. 5 3/4" Cup. 375 Hosts
Brass Goldplate, Smooth finish.



5176
Ciboria
7 1/8" Ht. 5" Cup. 300 Hosts
Brass Goldplate,
Smooth finish.



5160 *Chalice & Scale Paten*
Soft round hammering with hand
engraved "PX" symbol
8 1/4" Ht. 4 1/8" Cup. Dia. 15 Oz.
Brass Gold Plated
Cup Sterling Silver, g/p



5162 *Open ciboria*
4" Ht. 6 1/2" Dia. 450 Hosts.
Brass Gold Plated



5161 *Ciboria*
8 3/8" Ht. 4 3/4" Cup Dia.
250 Hosts.
Brass Gold Plated



5330
Chalice
7 1/4" height x 4 1/8" cup Ø
Brass goldplated



5331
Ciboria
7 1/2" height x 4 1/8" cup Ø
Brass goldplated



5310
Chalice
7 1/8" height x 4 1/8" cup Ø
Brass goldplated



5311
Ciboria
7 7/8" height x 4 1/8" cup Ø
Brass goldplated



5305
Chalice
6 1/2" height x 4 1/8" cup Ø
Brass goldplated



5306
Ciboria
7 1/2" height x 4 1/4" cup Ø
Brass goldplated

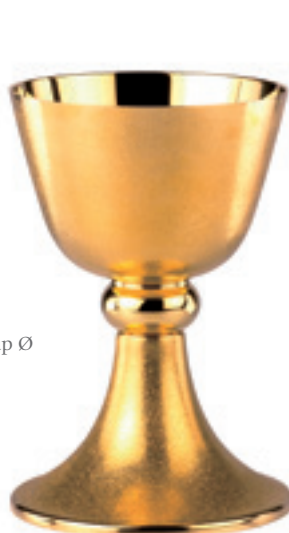


5320
Chalice
6 7/8" height x 4 1/8" cup Ø
Brass goldplated



5321
Ciboria
8 1/2" height x 4 1/8" cup Ø
Brass goldplated

5340
Chalice
6 1/4" height x 4 1/8" cup Ø
Brass goldplated



5341
Ciboria
7 1/4" height x 4 1/8" cup Ø
Brass goldplated



MATCHING OPEN CIBORIA FOR THIS COLLECTION, BRASS GOLDPLATED

NOTE: SCALE PATENS ARE 5 3/4 " IN DIAMETER Brass Goldplated • PRICES SUBJECT TO CHANGE WITHOUT NOTICE
HAND CRAFTED IN SPAIN • Richly lined cases are available for most of our chalices

MEMORIAL CHALICES



5365
Chalice
7 1/4" Ht. 4 1/2" Cup.
Stainless Steel, Gold Lined



5367
Open ciboria
4 1/4" Ht. 6 3/8" Cup. 350 host.
Stainless Steel, Gold Lined



5366
Ciboria
7 7/8" Ht. 4 3/4" Cup. 210 host.
Stainless Steel, Gold Lined



5125
Memorial Chalice
6 3/4" Ht. 4 3/4" Cup.
12 Oz



5095
Memorial Chalice
7 7/8" Ht. 4 1/8" Cup.
12 Oz



5110
Memorial Chalice
7 7/8" Ht. 4 1/8" Cup.
12 Oz



5165
Memorial Chalice
6 3/4" Ht. 4" Cup. 14 Oz
Fully hand hammered,
Double cup. Construction.
Golplated.



5180
Memorial Chalice
6 1/4" Ht. 4 1/2"
Cup. 15 Oz
Brass, Smoth Goldplate
finish.



5090
Memorial Chalice
7 1/2" Ht. 4 1/8" Cup.
14 Oz

MEMORIAL CHALICES



5380
Chalice and scale paten
Ivory enamel on cup
7 5/8" Ht. - 4 1/4" Cup 14 Oz.
Brass Gold Plated



Set also available in blood red



5382
Open Ciboria
2 3/4" Ht. - 6 3/4" Cup - 300 hosts
Brass Gold Plated



5381
Ciboria
8" Ht. - 4 5/8" Cup - 175 hosts
Brass Gold Plated



5080
Ciboria
(with Lucite Lid)
5 7/8" Ht. 4 1/8" Cup.
225 Hosts.



5070
Memorial Chalice
7" Ht. 4 1/8" Cup. 13 Oz
Hand hammered cup and base



5120
Memorial Chalice
7 1/2" Ht. 4 1/8" Cup.
12 Oz.



5075
Memorial Chalice
6 3/8" Ht. 4" Cup. 14 Oz
Hand hammered



5130
Memorial Chalice
7 1/4" Ht. 4 1/8" Cup. 12 Oz



5385
Chalice & Scale Paten
Unique design representing
Christ holding the cup.
9 1/4" Ht. - 4 1/8" Cup 8 Oz.
Brass gold plated



5085
Memorial Chalice
9 1/2" Ht. 3 1/2" Cup.
8 Oz



5100
Memorial Chalice
7 1/8" Ht. 4 1/8" Cup. 12 Oz

NOTE: SCALE PATENS ARE 5 3/4" IN DIAMETER Brass Goldplated • PRICES SUBJECT TO CHANGE WITHOUT NOTICE
HAND CRAFTED IN SPAIN • Richly lined cases are available for most of our chalices

Monstrances & Ostensoria

Our monstrances are delicately executed in sterling silver or high quality base metal, heavily gold or silver plated to achieve the best looking finish. The luna is always immaculately finished in 24 karat gold plate in order to expose with dignity the Host for the Adoration. Great selection of styles and sizes to meet your specific needs. Our monstrances are always built by hand, so different luna sizes and custom modifications are always available upon request.





***7293**
"Gothic Monstrance"

Rich cut-out Gothic filigree open work executed on this "one of a kind" magnificent monstrance. The finial cross is adorned with amethyst cabochons.

The ornamentation features grape motif and images of the Twelve Apostles and Four Evangelists.

Available in sterling silver and sterling silver with 24 Karat goldplate finish.

Sterling Silver
Sterling Silver Gold plated

Measurements:
Height: 30"
Head Width: 12 1/2"
Base: Oval shaped 9 1/4" x 7 1/2"
Luna: 3 1/8" diameter.



792
Monstrance Pedestal (Tabor)

Base is 21 3/8" Long x 11 1/4" Wide
8 1/8" total height x 12 3/8" top base diameter.

Brass
Silver Plated
Gold Plated





7205

Monstrance

Spectacular Gothic design evoking the great French monstrances of the past. Magnificent presence in full 35" height. Intricate chiselled/embossed design with the finest hand engraving job on base and node. Exquisite filigree and engraving job around halo with incredibly detailed figures of The Holy Spirit, Custodian Angels, St. Peter, St. Paul and the Madonna with Child on top.

35" total height, 9" base dia.
 Brass, s/p
 Brass, g/p
 All sterling silver
 All sterling silver, g/p

792

Monstrance Pedestal (Tabor)

Base is 21 3/8" Long x 11 1/4" Wide
 8 1/8" total height x 12 3/8" top base diameter.

Brass
 Silver Plated
 Gold Plated





***7231**
"The Baroque"

This exquisite monstrance is made in solid 925 sterling silver 24 K gold plate. It exemplifies the finest craftsmanship available. It is adorned with fire enamel Eucharistic symbols and hand carved figures of the Twelve Apostles.

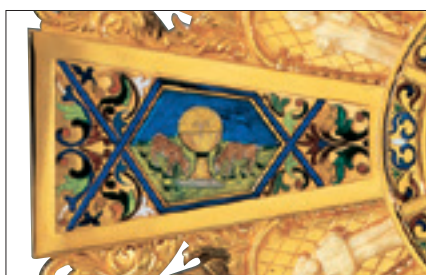
Measurements:
Height: 27 1/2"
Head Width: 14"

793

Pedestal For Monstrance (Tabor)

"The Four Evangelists", cross shaped base 18 3/8" square. 7 3/8" High x 12 3/8" top base diameter.

Brass
Silver Plated
Gold Plated





7290
"The St. Remy"
This beautiful monstrance, which matches the St. Remy chalice, is one of the finest examples of the expert craftsmanship of our silversmiths. Made in 925 sterling silver or brass 24 K gold plate, with cloisonné fire enamel in the cross, node and base, it is set with 40 genuine stones (Amethysts, Lapis Lazuli, Green Venturines and Garnets).
Measurements:
Height: 24"
Head Diameter: 12 1/2"
Brass Gold Plated
Sterling Silver, Gold Plated



7296
Monstrance
Baroque chiselled monstrance, entirely made in solid 925 sterling silver. The four fire-enamel medallions are made to order (Four Evangelists, the Holy Family and Holy Spirit, etc.) Available in silver or 24 karat gold plate finish.
Measurements:
Height: 27 1/2"
Head Width: 14"
Base Diameter: 11"
Luna: 3 1/2" diameter
Sterling Silver
Sterling Silver, Gold Plated

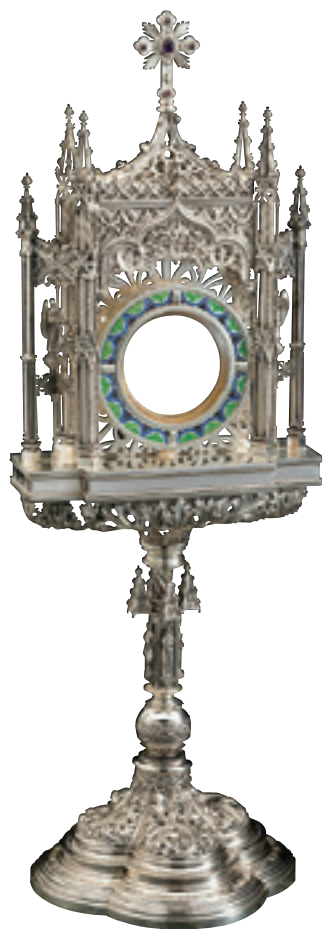


7274
"Tassilo" Monstrance
Matching with the "Tassilo" chalice. 25" Ht.
Brass, Two tone finish



7281
Monstrance
24 karat gold plate, French Gothic style, featuring the "Three Virtues" motif on base and figures of the Sacred Heart, St. Mary, St. Joseph and the Holy Spirit.
25" Ht.
Silver Plated
Gold Plated

Available in large size: 41 1/4" - 16 3/8"
Brass Silver plated
Brass Gold Plated



7295
"Gothic" Monstrance
Rich Gothic filigree open work.
The luna is adorned with a colorful
cloisonné fire enamel halo.
21 1/2" Ht. - 7" Head dia.
Sterling Silver



7299
Monstrance
Rich Gothic filigree open work depicting
St. Mary with Baby Jesus, St. Peter, St. Paul
and four Angels.
Base featuring medallions with Four
Evangelists.
27 1/2" Ht. - 11 1/2" Wide.
2 3/4" dia. Luna
Brass gold plated
Sterling Silver, goldplated



7289
Monstrance
21 3/4" Ht.
Silver Plated
Gold Plated



7283
"Gothic" Monstrance
Gothic design featuring figures
of the Sacred Heart and the Holy Spirit.
19 5/8" Ht. - 8 1/2" Head dia.
Gold Plated
Sterling Silver



7210

“Celtic” Monstrance

Beautiful celtic filigree work matching with our chalice “The Ardagh”, depicted on page nr. 20

Central cross arms and base rim are adorned with cloisonné fire enamel cabochons. The halo around Luna and node are embellished with garnet cabochon stones.

22 1/4” Ht. - 12 1/4” - 8 3/4” Base dia.
Brass Gold Plated Overall
Brass two tone (as pictured)



7291

“Renaissance” Monstrance

Adorned with royal blue fire enamel cabochons.

19 5/8” Ht. - 8” Head diameter.

Silver Plated
Gold Plated
Sterling Silver



7285

“Contemporary” Monstrance

Stained glass imitation Wheat and Grape ornamentation. Base entirely sculptured.

17” Ht. Gold Plated



7226

Monstrance

Evangelists’ symbols in fire enamel over silver foil. Stones set around the Luna. Hand engraved “Chi-Rho” on stem.

Silver Plated, 20” Ht
Silver Plated, 24” Ht.
Gold Plated, 20” Ht.
Gold Plated, 24” Ht.



7200
Monstrance
Stained glass imitation showing the symbols of the Four Evangelists.
20" Ht x 12 1/2" Wide.
Silver Plated
Gold Plated

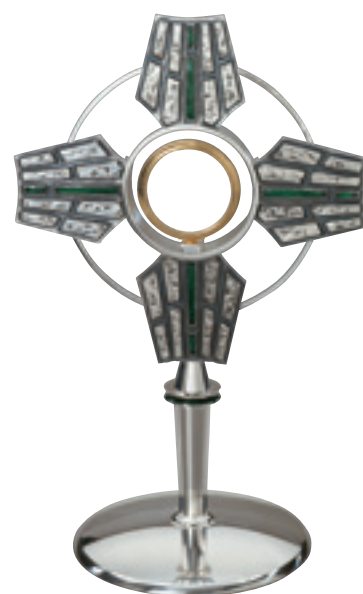


7252
Monstrance
Simple, clean lines on this modern design. Luna box ornamented with green fire enamelled halo.
Silver Plated, 18" Ht.
Silver Plated, 24" Ht.
Gold Plated, 18" Ht.
Gold Plated, 24" Ht.



7284
Monstrance
Graceful design finished in high gloss gold plate or silver plate. Luna box ornamented with zirconite stones.
Silver Plated, 14" Ht.
Gold Plated, 14" Ht.

7280
Monstrance
14 3/4" Ht. Green enamel.
Silver Plated
Gold Plated



940
Baldacchino
48 1/2" Ht.-28 3/4" W.-28 3/4" D
Brass Gold plated



941
Baldacchino
42" Ht.-23" Width-23" Depth
Brass Gold plated



230
"Tassilo" Ostensoria
Delicate design matching the "Tassilo" chalice. 9" Ht. Two Tone finish Sterling Silver Equipped with 2 3/4" Dia. Luna



226
Ostensoria
Last Supper with cloisonné fire enamel around luna and base. 8 7/8" Ht. Equipped with 2 3/4" Dia. Luna



298
"Baroque" Ostensoria
Deep relief baroque ornamentation 9 1/2" Ht. Two Tone finish Equipped with 2 3/4" Dia. Luna



7288
Ostensoria
Rich Gothic design. 9 1/2" Ht. Equipped with 2 3/4" Dia. Luna Gold plated



495
Ostensoria
11" Ht. - 6 3/4" Wide. Silver Plated



258
Ostensoria
Red or green stone setting around cross shaped head. 7 1/4" Ht. Equipped with 2 3/4" Dia. Luna Brass Silverplated Brass Goldplated



202
Ostensoria
Featuring wheat & grape motif. 6" Ht. Equipped with 2 1/2" Dia. Luna Brass Silverplated Brass Goldplated



AS-3
Reliquary
Neat Baroque design. 7 7/8" Ht. - 1 3/4" Dia. Relic box. Brass goldplated



796
Reliquary
Gothic ornamentation featuring the Holy Spirit and two Custodian Angels. 12 3/8" Ht. - 6 1/2" Wide. Relic box 2" Dia. Brass goldplated

789
Reliquary
Maltese Cross
Design With Fleur De Lys Accent
7 1/2" Ht. - 3 1/2" Wide Inner diameter 1 1/2" 1 1/2" diameter relic box Gold Plated



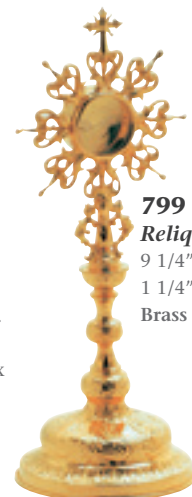
790
Reliquary
7 3/4" Ht. - 4 1/8" Wide Inner diameter 1 1/2" 1 1/2" diameter relic box Gold Plated



799
Reliquary
9 1/4" Ht. - 3 1/2" Dia. 1 1/4" diameter relic box Brass goldplated



788
Reliquary
6 5/8" Ht. - 4 1/8" Wide. Inner diameter 1 1/2" 1 1/2" diameter relic box Gold Plated





5581
Monstrance
Aureole with images of the Four Evangelists in silver plated.
21 1/2" Ht. 13" Wide x 8 7/8" Base Dia.
Brass Gold Plated

5539
Monstrance
Luna 2 3/4" Host
17 1/2" High.
10 1/2" Wide.
Goldplated finish



5538
Monstrance
Luna 2 3/4" Host
17 3/4" High. 9 5/8" Wide.
Goldplated finish
(Gold + silver)



5550
Tabor (Pedestal)
6" High. x 15" Wide (square)
10 7/8" Dia Platform.
Brass Gold Plated



5580
Monstrance
Gothic Style with filigree work around luna
21 3/4" Ht. 10 1/4" Wide x 7 7/8" Base Dia.
Brass Gold Plated



5540
Monstrance
Luna 2 3/4" Host
17 3/4" High.
10 1/2" Wide.
Two Tone finish
(Gold + silver)

5504

Monstrance

Luna 2 3/4" Host
Brass Gold or Nickelplated
16 1/2" Ht.
With Enamel
Without Enamel



7300

Ostensoria

17 3/4" Ht. - 9 5/8" wide - 5 3/4" Host
Brass Gold Plated



5583

Monstrance

Delicate "ray" motif
aureole with stars and
filigree halo.
25" Ht. 12 1/2" Wide x
8 3/4" Base Dia.
Brass Gold Plated



5506

Ostensoria

Luna 2 3/4" Host
7 3/4" Ht.
With Enamel
Brass Gold Plated



5505

Ostensoria

Luna 2 3/4" Host 7 5/8" Ht.
Goldplated



7310

Ostensoria

17 3/4" Ht. - 7 1/4" wide - 5 3/4" Host
Brass Gold Plated



7315

Ostensoria

6 1/4" Ht. x 4 1/2" wide - 2 3/4" Host
Brass Gold Plated



792-01

Tabor (Pedestal)

Smooth, classic design with beautiful custodian angels. Top is always custom manufactured for the measurements of the client's monstrance. Up to 9 Ø.
17 3/4" wide x 9 3/4" deep.
Brass, silver plated
Brass, gold plated



5582

Monstrance

Classic Style with red enamel halo
around luna.
20" Ht. 9" Wide x 8 1/4" Base Dia.
Brass Gold Plated

Tabernacles

Our tabernacles are built with the objective of magnifying the Altar and its surrounding space in which the tabernacle plays a key role: housing the Ciboria which contains the Body of Christ. No expense is spared when building these works of art. The attention to detail on each one of them has no equal, resulting in a top quality piece that inspires devotion. The same degree of perfection is achieved on the inside, always immaculately finished in rich 24 karat gold plate. All our tabernacles can be modified to the customer's requests. Custom chiselling and embossing jobs to represent different scenes as well as custom fire enamel doors are always available upon request.



4112**"Baroque" Tabernacle***

Rich baroque ornamentation, featuring different scenes of the life of Christ and statuettes of the Four Evangelists. The doorframe is adorned with graceful cloisonné fire enamel filigree design. The interior is richly ornamented with a high-gloss 24 karat goldplate finish. Available in bronze, silverplated or 24 karat goldplated finish.

Measurements:

Height: 33 1/2"

Width: 23 5/8"

Depth: 16 1/2"

Weight: 141 pounds.

Double door opening: 10 1/2" Wide by 13 3/4" High.

Silver Plate

Gold Plate





***4025**

"The Gothic"

A magnificent tabernacle handwrought in brass and copper, inner chamber richly ornamented and finished in 24 karat high gloss gold plate. It is finished in brass, silver or two tone (silver and gold plate) and has rich Gothic ornamentation featuring the Pantocrator on the door, the Holy Spirit and the Sacred Heart of Jesus, as well as the Twelve Apostles on both sides. Interior ornamented 24 karat gold plate.

Measurements:

Height: 37"

Width: 22"

Depth: 17"

Weight: 100 pounds.

Single door opening:

12 1/2" High by 9" Wide.

Silver Plate

Gold Plate

Two Tone

***4129**

Tabernacle

Superb oversized baroque tabernacle. "The Four Evangelists", ideal for a Cathedral. The door ornamentation features the "Agnus Dei". The top finial decoration depicts the image of St. Michael. 50" high x 29 3/4" wide x 23-1/4" deep
Weight: 150 Lbs.

Single door opening: 16" High x 11" Wide

Inner Chamber Size:

21 3/8" high x 17" Deep x 19-3/4" Wide

Silver Plated

Gold Plated



NEW

**4127
Tabernacle**

Elegant neo-classic design with cylindrical body featuring a hidden lock behind the Sacred Heart of Jesus figure on the door. Also featuring the Four Evangelists inside chapels around the body of the tabernacle.

31 7/8" High. x 22 1/16" Wide

Single door opening: 13 5/8" high x 9 1/2" wide

Brass Two tone (Gold & Silver)





4200

Tabernacle

Handsome Renaissance style with intricate features such as a unique split dome construction and fire enamel panel depicting the Immaculate Conception.

30" high x 19 3/8" wide x 17 3/8" deep

Brass, s/p

Brass, g/p

4064

"The Apostles"

Featuring the Twelve Apostles in high relief, this classic tabernacle is handwrought in copper and brass with two independent doors. Extra safe construction. It is finished in silver, gold or two tone (satin gold and hi-polish silver plate). A silversmith's masterpiece, built with the strength and weight of a safe-vault. Interior is also finished in 24 karat high gloss gold plate.

Measurements:

Height: 23 1/2"

Width: 28 1/2"

Depth: 15 3/4"

Weight: 102 pounds

Double door opening: 9" High by 16

1/2" Wide.

Silver Plated

Gold Plated

Two Tone





Door opening version A

4118

Tabernacle

Rich German Romanesque design, adorned with fire enamel cabouchons and cloisonné ornaments.

Two sizes:

A. 23" High x 14 3/4" Wide x 14 1/2" Deep.

Double Door Opening: 14 1/2" High x 13" Wide.

Brass Silverplated

Brass goldplated

Brass Two Tone

(Gold & Silver)

B. 35 1/2" High x 28" Wide x 17 1/2" Deep.

Double Door Opening: 10 1/2" High x 20 1/2" Wide.

Brass Silverplated

Brass goldplated



Door opening version B



***4123**

"The Renaissance"

Exquisite design, featuring rich deep relief ornamentation, adorned with fire enamel panels on interior chamber. The inner door is a glass door with ornamented goldplated frame and lock. The inner chamber carries a revolving platform with a central panel fully ornamented with delicate fire enameled panels showing "The Resurrection" and "The Ascension" scenes on each side.

Outside dimensions: 34" High x 20 3/4" Wide x 21 1/4" Deep.

Two door opening: 16" High x 11" Wide.

Single glass door opening: 13 1/2" x 13 1/2"

Inner chamber dimensions: 15 3/4" High x 14 1/4" Wide x 15 3/4" Deep.

Brass Silverplated

Brass Goldplate

4145

Tabernacle

Delicate chest-type tabernacle representing the Deposition from the Cross sculpted by Benedetto Antelami inside the cathedral of Parma (Italy) in 1178.

14 3/8" height x 24" width x 13" deep.

Brass, s/p

Brass, g/p



4220

Tabernacle

18 1/2" wide x 31 1/2" high x 12 5/8" deep

Brass, s/p

Brass, g/p

Brass, two tone



4140

Aumbry

Exquisite reproduction of a middle age crucifixion scene sculptured in the cathedral of Parma (Italy, 1.178 A.D.).

Outside dimensions:

Ornamental frontal panel: 27 1/2" wide x 18" high .

Outside chamber: 22" wide x 12 1/2" high x 10 3/4" deep.

Inner chamber: 20" wide x 10 1/2" high x 9" deep.

Door opening: 20 1/2" wide x 10 1/2" high.

Silver Plated

Gold Plated



***4109**

Tabernacle

Delicate chest-type tabernacle, with filigree celtic ornamentation matching our "Tassilo" chalice.

Rich ornamented interior in 24 karat Gold Plate.

19 1/2" High x 24" Wide x 11 1/2" Deep.

Single door opening: 8 3/4" High by 8 3/4" Wide.

Silver Plated

Gold Plated

Two Tone

4117

Tabernacle

Gothic design. Fitted with two double doors to display the luna.

A Fully closed.

B First double door open.

C Second door open.

Second door features an engraved ostensoria with a display window for the luna. Interior of tabernacle is fully ornamented, finished in 24 karat Gold Plated.

Two sizes are available:

4117-2

Large

31 1/2" High x 13" Wide x 14 1/4" Deep.
Double door opening: 16" High by 9" Wide.
Pedestal: 19 3/4" Wide x 21 1/4" Deep.

Brass finish
Silver Plated
Gold Plated
Two Tone (Gold & Silver)

4117-1

Small

28 1/8" High x 10 5/8" Wide x 14 1/4" Deep.
Double door opening: 14 1/2" High by 6 1/2" Wide.
Pedestal: 17 3/4" Wide x 21 1/4" Deep.

Brass finish
Silver Plated
Gold Plated
Two Tone (Gold & Silver)



4205

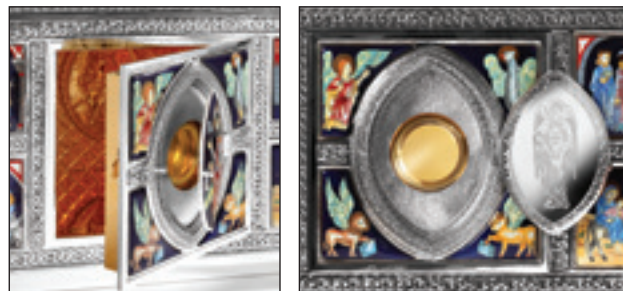
Tabernacle

Attractive Romanesque style tabernacle supplied with attached tabor to enhance its elegant appearance and enrich your liturgical space.

25 3/4" high x 24 3/4" wide x 16 1/2" deep
Brass, s/p
Brass, g/p



Custom adoration version details



***4104-03E**

Tabernacle large size, with fire enamel panels

Delicate chest-type tabernacle, with celtic filigree ornamentation and genuine fire enamels representing different scenes of the Life of Christ and Symbols of the Evangelists.

19 1/2" High x 24" Wide x 11 1/4" Deep.

Single door opening: 8 5/8" High x 8 3/4" Wide.

With enamels, silverplated

With enamels, goldplated

Custom Adoration version

Additional



***4104-C-E**

Tabernacle

Delicate Celtic ornamentation with genuine fire enamel panels featuring the Evangelists' symbols and the Pantocrator.

20" High x 12" Wide x 12" Deep.

Single door opening:

8 3/4" High x 8" Wide.

Silver Plated

Gold Plated

Without enamel panels deduct

***4104-01E**

Tabernacle

14" height x 13 3/4" Width x 9 3/4" Depth

Single door opening: 7" height x 5 1/2" Wide

Enamelled, brass silverplated

Enamelled, brass goldplated

***4104-01**

Tabernacle

14" height x 13 3/4" Width x 9 3/4" Depth

Single door opening: 7" height x 5 1/2" Wide

Without enamels, brass silverplated

Without enamels, brass goldplated

***4104-03**

Tabernacle

19 1/2" High x 24" Wide x 11 1/4" Deep.

Without enamels, brass silverplated

Without enamels, brass goldplated

***4104-07**

Pedestal

Equipped to be mounted to the wall.

26 3/8" long - 13 3/8" wide - 4 3/8" high

Brass Silver plated

Brass Gold plated



***4115**

Tabernacle

Chest type tabernacle featuring the Twelve Apostles with blue enamel background.
 20" High x 20" Wide x 12" Deep.
 Double door opening: 8 1/4" High by 15" Wide.
 Silver Plated
 Gold Plated



4087

"Gothic" tabernacle

Rich Gothic ornamentation featuring the Agnus Dei and the Seven Seals Gospel. Two tone finish. Interior richly ornamented, with 24 karat gold plate finish.
 31 1/2" High x 18 1/2" Wide x 14 1/2" Deep.
 Single Door Opening: 15" High x 10 1/2" Wide
 Silver Plated
 Two Tone
 Gold Plated

4111

Tabernacle

Exquisite design featuring the Crucifixion scene.
Rich interior finished in 24 karat Gold Plate.
15" High x 18" Wide x 11" Deep
Single door opening: 9 1/2" High by 6 3/4" Wide.
Silver Plated
Gold Plated

4111-1

Pedestal

Rectangular pedestal with tridimensional "Angel" figures
Upper base measurements:
19" Wide x 11 3/4" Deep.
Lower base measurements:
26 1/2" Wide x 19" Deep.
9" Total High
Silver Plated
Gold Plated



4114

"The Annunciation" Tabernacle

Scene worked in deep relief. Hexagonal design with dome. Rich ornamented interior, finished in 24 karat Gold Plate.
22" High x 23" Wide x 15 1/2" Deep.
Single door opening: 10" High by 10" Wide.
Silver Plated
Gold Plated
Two Tone



4126

Tabernacle

Classic design, featuring "The Baptism" scene
Outside measurements:
20" Ht. x 20" Wide x 15" Deep.
Single door opening: 10" High by 7" Wide.
Silver Plated
Gold Plated
Two tone



4114-1

Pedestal

Rich hexagonal shape pedestal supported by four tridimensional "Angel" statuettes.
Lower base measurement:
35 1/2" Wide x 26 1/2" Deep
Upper base measurement:
25 1/2" Wide x 17 3/4" Deep x 10 1/2" Total High
Brass Silverplated
Brass goldplated





4015

Tabernacle

Superb bas relief representation of the Twelve Apostles.
 11 1/2" High x 19" Wide x 11" Deep.
 Two door opening: 8 1/4" by 17" Wide
 Silver Plated
 Gold Plated
 Also available in 15 3/4" High x 20 7/8" Wide x 12 5/8" Deep
 Silver Plated
 Gold Plated



4094

Tabernacle

Domed tabernacle, combining green marble and metal.
 16 1/2" High x 19" Wide x 12 1/2" Deep.
 Single door opening: 8 1/2" by 8" Wide.
 Silver Plated
 Gold Plated



***4116**

"The Evangelists" Tabernacle

This exquisite tabernacle is distinguished by the simplicity and grace of its classic design. The fire enamelled front panels depict the Four Evangelists images, as well as their symbols. The center right panel has a sliding mechanism to cover the key-hole. Available in silverplate and 24 karat gold plated finish. The interior is richly ornamented, featuring the Pelican symbol, with 24 karat high gloss gold plated finish.
Measurements:
 Height: 20" (including finial cross)
 Width: 22"
 Depth: 13 1/2"
 Weight: 84 pounds
 Double door opening: 11" High by 17 1/4" Wide.
 Silver Plated
 Gold Plated



4093

Tabernacle

Oval shaped design featuring the Pentecost (Twelve Apostles, the Madonna, the Holy Spirit and 12 flames).
 15" High x 23 1/2" Wide x 13 3/4" Deep.
 Double door opening: 11" High by 15 3/4" Wide
 Bronze
 Silver Plated



4132

"Holy Spirit" tabernacle

Hinged wing opens to accommodate pyx
 Dove Length 8"
 Bracket for wall mounting
 Total Projection: 10"
 Brass 24 Karat Gold Plated



4040

Tabernacle

Exquisite Resurrection scene.
 15 1/4" High x 21 1/4" Wide x 12 3/4" Deep.
 Single door opening: 8 1/4" High by 6 7/8" Wide.
 Silver Plated
 Gold Plated



4120
Tabernacle

Magnificent deep relief romanesque ornamentation, inspired on the main façade of the Cathedral of Friburg (Saxonia, 1230 A.D.). The door is finished in 24 karat goldplate and silverplate, depicting images and symbols of the Four Evangelists. Outside measurements: 28" Ht. x 25 1/2" Wide x 19 1/4" Deep. Single door opening: 12" Ht x 10 1/4" Wide. Silverplated finish Two tone (Gold & Silver) as pictured Goldplated overall

4125

Tabernacle
High polish green marble with 24 karat goldplate ornaments. The door is featuring a deep relief "Sacred Heart" Outside measurements: 28" Ht. x 20" Wide x 20" Deep. Single door opening: 13" Ht x 10" Wide. Silver Plated Gold Plated



4103

Tabernacle
Based on the 4101 design, with dome. Green marble with white veins. Outside measurements: 16" Ht. x 13" Wide x 11 1/2" Deep. Single door opening: 8 1/4" Ht x 7" Wide. Silver Plated Gold Plated



4101

Tabernacle
Fine "Holy Family" design. Main body of tabernacle is constructed in high polished green marble. 12" High x 13" Wide x 11 1/2" Deep. Single door opening: 8" High by 7 1/2" Wide. Silver Plated Gold Plated



4102

"The Good Shepherd" tabernacle
Graceful metal and green marble tabernacle with dome. Ornamented 24 karat Gold Plated interior. 26" High x 18" Wide x 13" Deep. Single door opening: 13 1/2" High by 8 1/2" Wide. Silver Plated Gold Plated



4099-2

14 3/8" High x 13 5/8" Wide x 10 5/8" Deep. Two door opening: 8 1/2" High by 11" Wide. Silver Plated Silver Plated, with enamel Gold Plated Gold Plated, with enamel



4067
Aumbry

Ref. Nr.	With Grape & Wheat motif Aureole	
Aureole	22 1/2" H. x 26" W.	14 3/8" H. x 17 7/8" W.
Safe	11 1/4" H. x 13 1/4" W. x 9 1/4" D.	8 1/2" H. x 10 7/8" W. x 8 5/8" D.
Single door opening	9 1/2" H. x 11 1/2" W.	6 3/4" H. x 9 3/8" W.
Silver Plated, gold lined		
Gold Plated overall		
Two Tone, gold lined		



4066
Aumbry

Ref. Nr.	With Floral motif Aureole	
Aureole	22 1/2" H. x 25 1/4" W.	17 1/2" H. x 18 1/4" W.
Safe	11 1/4" H. x 13 1/4" W. x 9 1/4" D.	8 1/8" H. x 9 3/4" W. x 8 1/4" D.
Single door opening	9 1/2" H. x 11 1/2" W.	6 3/8" H. x 8" W.
Silver Plated, gold lined		
Gold Plated overall		
Two Tone, gold lined		

4097
Tabernacle
Baroque tabernacle.
20" High x 15 1/4" Wide x 11" Deep.
Single door opening: 9 1/2" High by 6 1/2" Wide.
Silver Plated, gold lined
Gold Plated



4075
Tabernacle
Bold modern cross design.
11 1/2" High x 13" Wide x 10" Deep.
Single door opening: 8 3/4" High by 11 1/2" Wide.
Silver Plated, gold lined
Gold Plated
Bronze



4026
Gothic aumbry or tabernacle
Silver Plated, g/l
Two Tone
Gold Plated
31" High x 18" Wide x 13" Deep.
Single Door Opening 14" High x 9" Wide.



4100
Tabernacle
Baroque tabernacle featuring the Crucifixion.
20" High x 12 1/4" Wide x 11 1/2" Deep.
Single door opening: 11" High by 6" Wide.
Silver Plated, gold lined
Gold plated
Bronze





4134
"The Twelve Apostles" Tabernacle
Fine detail representation of The Apostles, mounted on a high polished "Imperial" marble vault.
24" High x 24 1/2" Wide x 12" Deep.
Two door opening:
13 1/2" High x 19 1/2" Wide
Silverplate
Gold plated
Bronze



929-T
Tabernacle
Simple, yet attractive design combining brass and marble. This tabernacle matches our 929 altar pedestal.
15 1/2" High x 15 1/2" Wide x 11 1/2" Deep
Double door opening: 13 1/2" High x 13 1/2" Wide
Brass high polish:



927-T
Tabernacle with Travertine Marble Pedestal
17" High x 15 3/4" Wide x 11 1/2" Deep
Two door opening: 15" High x 15" Wide
Two tone finish tabernacle
Marble wall pedestal
6" High x 18" Wide x 18" Deep.



4210
Tabernacle
Unique 13 3/4" round front design with IHS symbol - Gold plated square Inner chamber, 8" high x 8" wide x 9" deep

* Surcharge for double door (5 3/4" Host) perpetual Adoration system:
* Available with foot (Altar fixing) or without foot (as Ambry)



4000
Tabernacle
Cast bronze, beveled front, two doors.
141/2" High x 171/2" Wide x 12 1/2" Deep.
Door opening: 11" High by 15 1/2" Wide.
Silver Plated, gold lined
Gold Plated, gold lined

4120-S
Tabernacle
Rich deep relief romanesque ornamentation, inspired on the main façade of the Cathedral of Friburg (Saxonia, 1230 A.D.)
Outside measurements:
18" Ht. x 12 1/2" Wide x 15" Deep.
Single door opening:
11 1/4" Ht x 10 3/4" Wide.
Silver Plated
Gold Plated





4128

Tabernacle

Superb deep relief representation of The Four Evangelists. Rich inner ornamentation, finished in 24 karat goldplate
 Outside measurements:
 13" Ht. x 18 3/4" Wide x 12" Deep
 Two door opening:
 11 1/4" Ht x 17" Wide
 Brass
 Silver Plated
 Gold Plated



5577

Tabernacle

15-3/8" wide x 14" high x 11-7/16" deep.
 Door opening: 11-13/16" Wide x 8-1/2" High

Brass
 Brass Goldplated



5566-L

Tabernacle

Modern design representing "Fish & Net" motifs:
 19 1/8" High x 18 7/8" Wide x 12" Deep
 Brass
 Silver plated



5570-L

Tabernacle

Simple "Wheat" motif with The Gethsemane Mount on the background: 15 3/4" High x 18" Wide x 12" Deep
 Brass
 Silver plated



5567-L

Tabernacle

Deep relief ornamentation of the Last Supper
 15 3/4" High x 18" Wide x 12" Deep
 Brass
 Silver plated



5575

Tabernacle

Constructed with solid brass plates. Applied Pelican symbol on door.
13" High x 14" Wide x 9 1/2" Deep
Single door opening: 10" Ht. x 13" High
Brass Finish
Two tone Finish



4061

Tabernacle

Heavy textured door, with symbols of The Evangelists with red enamel background.
7 1/2" High. x 9 1/2" Wide x 7 1/4" Deep
Single door Opening: 5" Ht x 8" Wide

Brass
Silverplated



5576

Tabernacle

Square box design with low relief image of the Pantocrator
Measurements:
15" wide x 14" High x 14" deep.
Brass, silver plated



5571

Tabernacle

Modern "PX" design, with heavy textured door.
Strong polyester cast, with metal finish.
12 5/8" High x 11" Wide x 11" Deep.
Single door opening:
10" Wide x 10" High
Brass Finish
Silverplate Finish



5567-S

Tabernacle

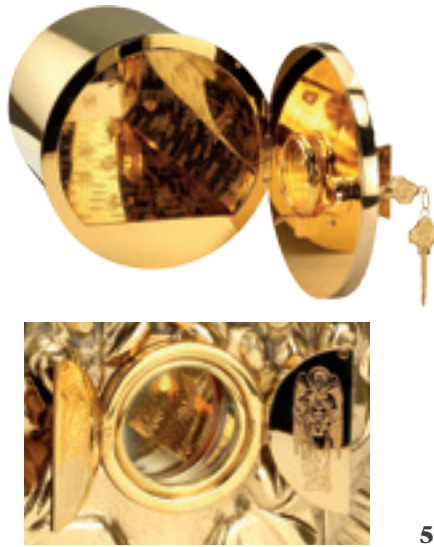
Deep relief representation of the Last Supper.
15" High. x 14 3/8" Wide x 11" deep.
Single door opening: 8 5/8" High x 12" Wide
Brass finish
Silverplate finish



5566-S

Tabernacle

Modern design representing the Fish & Net motif.
14 3/8" High x 14 3/8" Wide x 11" deep
Single door opening: 8 5/8" High x 12" Wide
Brass finish
Silverplate finish



5565-C

Aumbry

Unique 9 7/8" Ø round front design with contemporary "Last Supper" scene in polyester over brass construction. Gold plated inner chamber.

Single door opening: 6 3/4" High x 8 1/4" Wide.

Brass Finish

Silverplate Finish

* Surcharge for double door (2 3/4" Host) Perpetual Adoration system:

5565

Tabernacle

Contemporary "Last Supper" scene. Extra thick polyester box, with metalized finish. 10 5/8" High. x 10" Wide x 10 3/8" deep.

Single door opening: 8" High x 8" Wide

Brass finish

Silverplate Finish



5531

Tabernacle

Door with heavy sculptured wheat motif Extra thick polyester box.

11 1/4" Ht. 13 5/8" Wide x 9 1/2" Deep

Single door opening:

8 1/2" High x 11 1/2" Wide

Brass Finish

Silverplate Finish



5572

Tabernacle

Classic "Agnus Dei" symbol.

Featured with rich detail. Heavy polyester cast, with metallic finish.

15" High x 11" Wide x 11" Deep

Single door opening:

10" Wide x 10" High

Brass Finish

Silverplate Finish



5573

Tabernacle

Neat rectangular design featuring an abstract brass door.

Measurements:

14" Wide x 12" High x 11" Deep

Brass

Brass silverplated



5508

Tabernacle

Good Shepherd design. Heavy polyester cast, with metalized finish. 10 3/4" high x 9 3/4" Wide x 10 1/2" Deep. single door opening: 8" High x 8" Wide

Brass Finish

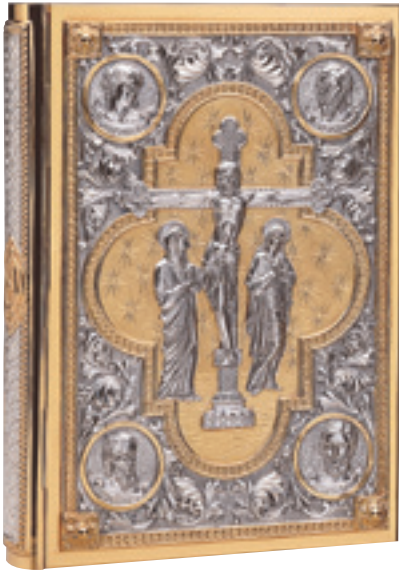
Silver plated Finish

MOLINA © 2017-2018
ALL RIGHTS RESERVED - HAND MADE IN SPAIN
ALL MEASURES ARE APPROXIMATE
PRICES SUBJECT TO CHANGE WITHOUT NOTICE

Altar accessories & Bishop's appointments

In this section you will find a full array of products that will help you complement your Liturgy and fulfil your specific needs. Browsing through these pages you will find one of the broadest selections of Bishop's appointments available in the market, Altar sets, Censers, Crowns for Statuary, Sanctuary Lamps, Stations of the Cross, beautifully handcrafted book covers, Ceiling Chandeliers or Paschal Candlesticks to name a few.





2000

2000-2500-3000-3500-4500-6000
Book Of Gospels

For books measuring:

	Height	Width	Spine
Maximum	14 3/16"	9 1/4"	1 9/16"
Minimum	13"	8 5/8"	1 4/16"

FINISH	3500	3000
	2500	6000
	2000	4500
Brass		
Silver plated		
Gold plated		
Two tone		

Custom clasps available at additional



3000



3500

2500



4500-E



6105

Book cover holder

12 1/4" wide x 4 1/8" deep x 3 1/8" high (holder width always made custom for each book size)
Brass s/p
Brass g/p



6100

Book cover holder

12 1/4" wide x 4 1/8" deep x 3 1/2" high (holder width always made custom for each book size)
Brass s/p
Brass g/p

*NOTE: 4500 series is available with cloisonné fire enamels at additional 1,385 €



5000

LARGE LECTIONARY
5000 SERIES
9000 SERIES

For books measuring:

	Height	Width	Spine
Maximum	12"	8 5/8"	2 1/4"
Minimum	10 7/8"	8 1/4"	1 3/4"

Finish
Brass
Silver Plated
Gold Plated
Two Tone

Custom clasps are available for any of our book covers at additional
Please, always indicate the exact measures for the book in order to provide a perfect fitting brass cover.



9000



6000

6025
Deeply tooled missal stand, with Agnus Dei and alpha & omega symbols.
15" Wide x 11 1/2" Deep x 4 3/4" Ht.
6020 Old Brass
6025 Antique Silver
6030 Royal Gold
6035 Two tone (Gold+Silver)

6020
Deeply tooled missal stand, with Agnus Dei an alpha & omega symbols.
15" Wide x 11 1/2" Deep x 4 3/4" Ht.
6020 Old Brass
6025 Antique Silver
6030 Royal Gold
6035 Two tone (Gold+Silver)



6236



251



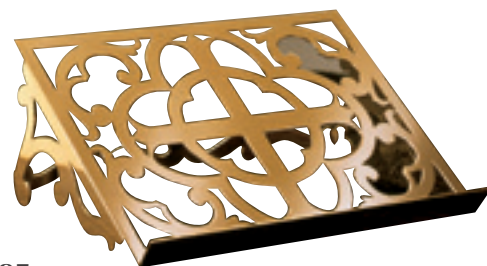
252

BOOK STANDS

Ref. Nr.			
Size	131/4" x 10" x 23/4	131/4" x 10" x 23/4"	121/2" x 10" x 31/2"
Brass			
Silverplate			
Stainless Stell			

6010
Book stand
Gothic style, hand wrought in bronze.
11 3/4" High x 9 3/4" Wide.
Silverplated
Goldplated

5532
Tooled Book Cover*
Heavy tooled book cover, available in different finishes.
Brass, Silver, Gold or Two Tone.
Spanish Romano missal and Spanish Bible.
10" Ht. 7" Wide. 2 1/4" Spine.
Brass Finish
Silver Finish
Gold Finish
Two Tone Finish



787
Classic Hand Cut-out Cross Design
14" Wide x 10 1/2" Long x 5 1/2" High.
Brass
Silver Plated



686
Censer, Boat & Spoon
Classic style.
Censer: 10 3/4" Ht x 5 1/8" dia.
Boat: 5" Ht. x 4 1/4" dia.
Copper brass finish
Copper Silverplated



276
Censer, Boat & Spoon
Baroque design.
Censer: 12 3/4" Ht x 6 3/4" dia.
Boat: 4 3/8" High x 7 1/4" Long
Copper brass finish
Copper Silverplated



650
Censer, Boat & Spoon
Gothic design with filigree open work.
Censer: 13 1/2" Ht x 6" dia.
Boat: 7 1/8" Ht x 5" dia.
Copper brass finish
Copper Silverplated



680
Censer, Boat & Spoon
An accurate reproduction of the original "Botafumeiro" housed in the Cathedral of Santiago de Compostela (Spain) manufactured by us in 1971.
Censer: 11 1/4" Ht x 7" dia.
Boat: 3 1/4" Ht. x 4 3/4" dia.
Brass
Silver Plate

757
Censer, Boat & Spoon
7 7/8" High x 5 1/8" diameter.
Copper brass finish
Copper Silverplated



675
Censer, Boat & Spoon
Hammered finish.
Censer: 7 1/2" Ht x 5" dia.
Boat: 3" High x 5 5/8" Long.
Brass
Silver Plate



5557
Censer & Boat
Censer 9 1/2" Ht. x 4 1/2" Dia.
Boat 2 1/2" Ht. x 4" Dia.
Brass
Silverplate



677
Censer, Boat & Spoon
Censer: 11 1/2" Ht x 5 1/2" dia.
Boat: 4 1/8" Ht x 6" long.
Brass
Silver Plate

676
Censer, Boat & Spoon
Censer: 12" Ht x 5" dia.
Boat: 2 3/4" Ht x 5 3/4" long.
Brass
Silver Plate



5558
Censer & Boat
Censer 8" Ht. x 4" Dia.
Boat 3" Ht. x 6" Long x 3" Dia.
Goldplate



5541
Censer & Boat Set
Censer: 8" High x 5 1/2" Ø.
Boat: 6 1/2" Long x 4" High.
Brass



5542
Censer & Boat
Censer: 9 1/2" High x 5 1/2" Ø.
Boat: 6 1/8" Long x 4" High.
Brass

CRUET SETS



4004
Jug & Basin
(Jug and Bowl) 5 1/2" x 8" Dia. bowl
Silver Plated



797
Jug & Basin
Jug: 6 3/4" High x 3 1/8" Cup.
Bowl: 3 1/8" x 10 1/2" Dia.
Silverplate



AS-207
Jug & Basin
Jug: 4 1/4" High
Bowl: 2 3/4" x 6 1/4" Dia.
Brass silverplated



AS-206
Jug & Basin
(Jug and Bowl) 5 1/2" x 8" Dia. bowl
Silver Plated



795
Jug & Basin
Jug: 9 1/2" High
Bowl: 2 3/4" x 12 1/4" Dia.
Brass silverplated



AS-205
Jug & Basin
Jug: 4 1/4" High
Bowl: 2 3/4" x 6 1/4" Dia.
Brass silverplated



206
Bucket & Sprinkler
5 1/2" Ht x 4 1/2" dia.
Brass
Silver Plate



205
Bucket & Sprinkler
4 1/2" Ht x 4 1/2" dia.
Brass
Silver Plate



639
Bucket & Sprinkler
4 1/2" Ht x 4" dia.
Brass
Silver Plate



250
Bucket & Sprinkler
6 1/2" Ht x 5 3/8" dia.
Brass
Silver Plate



249
Bucket & Sprinkler
6 1/4" Ht x 5 3/8" dia.
Brass
Silver Plate



5050-L Jug & Basin
 Jug: 4 1/2" height x 3 1/4" Ø
 Bowl: 2 1/2" height x 6 1/4" Ø

Brass silverplated
 Brass goldplated



5057-L Jug & Basin
 Jug: 4 1/2" height x 2 3/4" Ø
 Bowl: 2 1/2" height x 6 1/4" Ø

In stainless steel



5605 Cruet Set
 Cruet: 4 3/4" height x 3 1/8" wide
 Tray: 9 1/2" large x 4 1/4" wide

Brass silverplated
 Brass goldplated



5503 Baptism Set
 11 1/4" x 6" x 3 5/8" Ht.
 Brass Nickelplated with glass liners



5500 Stainless Steel Cruet Set
 9-1/8" x 6" x 5-1/4" Ht.



5502 Stainless Steel Cruet Set
 9-1/8" x 6" x 6-1/2" Ht.



5501 Stainless Steel Cruet Set
 9 1/8" x 6" x 3 3/8" Ht.
 Lids with hinges



5517 Pyx
 20 Host Capacity
 2 1/4" Ø
 Brass Gold Plated



5516 Host Box
 2 1/4"Ht. 4" Ø
 Stainless Steel, Gold Lined



5621 Sprinkler only
 6 7/8" long x 1 5/8" Dia
 Brass, nickel plated



5615 Bucket only
 4 3/4" x 5 3/16" Dia.
 Brass, nickel plated



5616 Bucket only
 4" x 6 1/8" Dia.
 Brass, nickel plated



5617 Bucket only
 4 3/4" x 5 5/8" Dia
 Brass, nickel plated



5610 Lavabo set (Jug & bowl)
 7 1/4" x 10" Dia. Bowl.
 Brass, nickel plated



5618 Bucket only
 4 3/4" x 4 7/8" Dia.
 Brass, nickel plated



5619 Bucket only
 4 1/2" x 4 1/8" Dia.
 Brass, nickel plated



5620 Bucket only
 5" x 4 1/2" Dia.
 Brass, nickel plated



2920-02
Tray. 9" Long x 6 5/8" Wide.
Cruet: 7 1/2" High.
Brass Silverplated
Brass Goldplated

AS 205
Tray. 9" Long x 5 1/2" Wide.
Cruet: 4 1/4" High.
Brass Silverplated
Brass Goldplated



2501
Tray 10 1/4" long - 6 1/8" wide
Brass Gold plated
Cruet 6 1/4" High
Sterling Silver Gold plated



754
Tray. 9 1/4" Long x 6" Wide.
Cruet: 6" High.
Brass goldplated
Sterling Silver g/p

753
"Tassilo" cruet set fitted with glass liners.
10 1/4" x 7 1/8" Tray - 6" Ht. Cruets.
Brass Two Tone



723
Cruets set
Cruet: 5 1/2" height x 2 3/4" wide
Tray: 9 1/2" large x 4 1/4" wide
Brass silverplated
Brass goldplated



724
Cruets set
Tray. 13" Long x 9" Wide.
Cruet: 5 1/2" High.
Brass Silverplated
Sterling Silver

744
Hi-polish set fitted with glass liners.
8 3/4" Long - 6" Wide Tray - 3 1/2" Ht.
Cruets.
Silver Plate
Gold Plate



4003
Cruets set
10" x 6 3/8". Silver Plated



288
Gothic style fitted with hand cut glass liners. 10 1/4" Long - 7 1/8" Wide Tray
5 1/2" Ht. Cruets.
Silver Plate
Gold Plate



622
Cruets set
Tray. 6 1/4" Long x 3 3/4" Wide.
Cruet: 3 1/4" High.
Brass Silverplated
Brass Goldplated

CROWNS FOR STATUES

We hereby present a small selection of Aureoles, Crowns and Rays of classic design. Each of them is available in different sizes adjustable to the diameter of the head of the statue. All these different models can be exchanged using the crown of one with the aureole of the other. Custom crowns are always available under special request to meet your individual needs.



125

Crown Ø	Aureole Ø	Gold plated
6,5 "	24 3/8"	
4 3/4"	19"	
4 3/8"	17 1/2"	
4"	17 1/2"	
3 1/2"	14 1/2"	



129

Crown Ø	Aureole Ø	Gold plated
5 1/2"	23 1/4"	
5 1/8"	23 1/4"	
4 1/2"	18 7/8"	
4"	18 7/8"	
3 1/2"	15 3/8"	
3 1/8"	14 1/4"	
2 3/4"	14 1/4"	



131

Crown Ø	Aureole Ø	Gold plated
5 1/8"	19 7/8"	
4 3/4"	19 7/8"	
4 3/8"	17"	
4"	17"	
3 1/2"	17"	
3 1/8"	12 1/2"	
3"	12 1/2"	
2 3/4"	11 1/4"	
2 3/8"	11 1/4"	
2"	6 3/4"	
1 5/8"	6 3/4"	



130

Crown Ø	Aureole Ø	Gold plated
5 1/8"	19 7/8"	
4 3/4"	19 7/8"	
4 3/8"	17"	
4"	17"	
3 1/2"	17"	
3 1/8"	12 1/2"	
3"	12 1/2"	
2 3/4"	11 1/4"	
2 3/8"	11 1/4"	
2"	6 3/4"	
1 5/8"	6 3/4"	



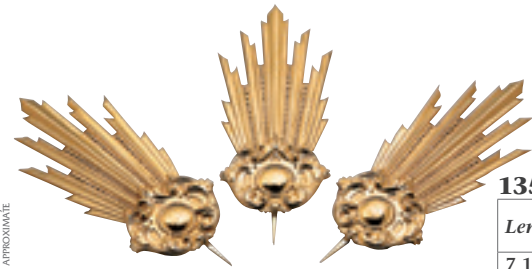
132

Crown Ø	Aureole Ø	Gold plated
5 1/2"	23 1/4"	
5 1/8"	23 1/4"	
4 1/2"	18 7/8"	
3 7/8"	18 7/8"	
3 1/2"	15 3/8"	
3 1/8"	15 3/8"	
2 3/4"	14 1/4"	



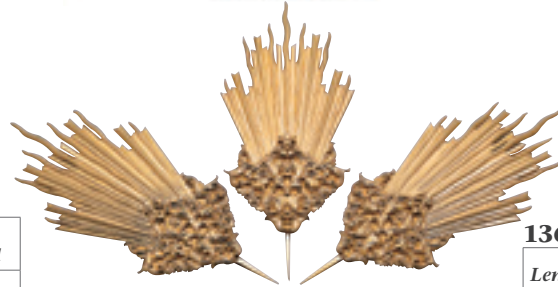
141

Crown Ø	Aureole Ø	Gold plated
	10 5/8"	



135

Length	Wide	Gold plated
7 1/2"	3 1/2"	



136

Length	Wide	Gold plated
8 5/8"	4 3/8"	
6 3/4"	3 1/2"	
4 3/4"	2 1/2"	



134

Half Moon
Ornamental Half Moon.
21 1/2" Long
Brass Silver Plated



133

Half Moon
Ornamental Half Moon.
18" Long
Brass Silver Plated

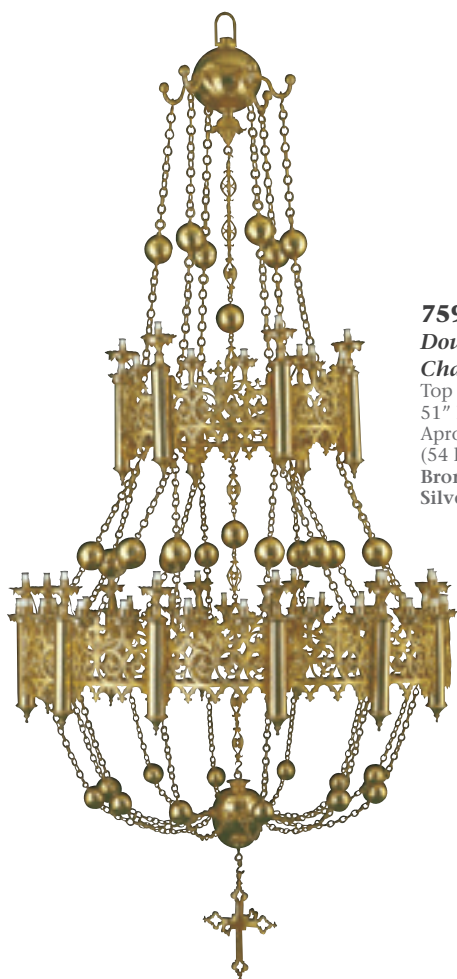
CEILING CHANDELIERS

Crafted in sand cast bronze, these cathedral-style chandeliers can be supplied with one, two or three bodies as they are shown on this page fully electrified per U.S. standards oven baked lacquer for durability. An attractive hand wrought bracket is also available to hang them from a wall.

7595-1
Triple Body Ceiling Chandelier
Body diameters from top to bottom are 28" - 51" - 67"
Aproximate total height 12 feet (90 lights).
Bronze finish
Silverplate



7595-2
Double Body Ceiling Chandelier
Top Body is 28" Dia., lower body is 51" Dia.
Aproximate total height 10 feet (54 lights).
Bronze finish
Silverplate



7595-3
Single Body Ceiling Chandelier
Top Body is 28" Dia. (18 lights).
Aproximate total height 5 1/2 feet.
Bronze finish
Silverplate



*Please check delivery charges depending on destination.

*Bulbs not included.



699
Sanctuary Lamp
Deep Gothic relief ornamentation. Main body is 12 3/4" High x 10 1/4" diameter (without globe). Approx. total height with chains 42"
Brass
Silver Plate



695
Sanctuary Lamp
Rich celtic ornamentation, depicting medieval scenes. Main body measurements, without chains: 14 1/4" High x 15 3/4" Maximum width. 42 1/2" total Height with chains & finial cross
Brass
Silverplated
Goldplated



8304
Sanctuary Lamp
Main body, without globe, is 9 3/4" High x 12" diameter. Approx. total height with chains 28"- 30".
Brass
Silver Plate



759
Sanctuary Lamp
Main body, without globe, is 15 1/2" High x 14" diameter. Approx. total height with chains 46"
Brass
Silver Plate

GLASS FOR SANCTUARY LAMPS

7 DAY GLASS	1 QT. GLASS
698 Lamp	699 Lamp
702 Lamp	701 Lamp
AS-5-S Lamp	8304 Lamp
185-7 Lamp	695 Lamp
185-6 Lamp	5526 Lamp
929-SL Lamp	
5050-P Lamp	
5050-T Lamp	



696
Arm
Protruding 6-1/4" from the wall and with 5/8" in height. Anchorage area: 2-3/8" high x 1-3/16" wide.
Brass
Silverplated



AS-5-S
Sanctuary Lamp
6 1/8" height x 4 3/4" Ø (globe not included).
Brass
Silver Plate



AS-185-7
Wall Sanctuary Lamp
10" High x 8" wide (projection). Globe not included.
Brass
Silver Plate



701
Sanctuary Lamp
Main body is 15" High x 14" diameter (without globe). Approx. total height with chains 36"
Brass
Silver Plate



698
Sanctuary Lamp
Main body is 8" High x 9" dia. (without globe). Approx. total height with chains 28"
Brass
Silver Plate



702
Sanctuary Lamp
Main body is 14 1/2" High x 13 1/2" diameter (without globe). Approx. total height with chains 36"
Brass
Silver Plate



AS-185-6
Standing Sanctuary Lamp
9 1/2" High x 6 1/2" diameter (globe not included).
Brass
Silver Plate



929-SL
Sanctuary Lamp
Combination of brass and marble.
Brass finish



5526
Sanctuary Lamp
12 1/2" Ht.
Brass
(Glass not included)



0006
Sanctuary Lamp
27" high x 9" Dia
(Glass not included)
Brass
Silverplate



5533
Sanctuary Lamp
made in Stainless Steel
(Glass not included)
5 3/4" Ht. 4 3/4"Ø.



5534
Sanctuary Lamp
made in Stainless Steel
(Glass not included)
4 1/4" Ht. 4 3/4"Ø.



4099L
Sanctuary Lamp
5 1/8" high
(glass globe not included)
Brass s/p
Brass g/p

Without decorative band:
Brass s/p
Brass g/p



5050-P
Wall Sanctuary Lamp
5 1/8" in height
(glass globe not included)
Brass silverplated
Brass goldplated



930
Candlestick
Brass, with rope ornamentation
42" High x 12" base dia.



5548
Altar Candlestick
Smooth, classic design.
Height: 12 3/4", 2" socket
Brass finish



5547
Floor Candlestick
Smooth, classic design.
Height: 23 3/4", 2" socket
Brass finish



5546
Floor Candlestick
Classic design.
Height: 28", 2" socket
Brass finish

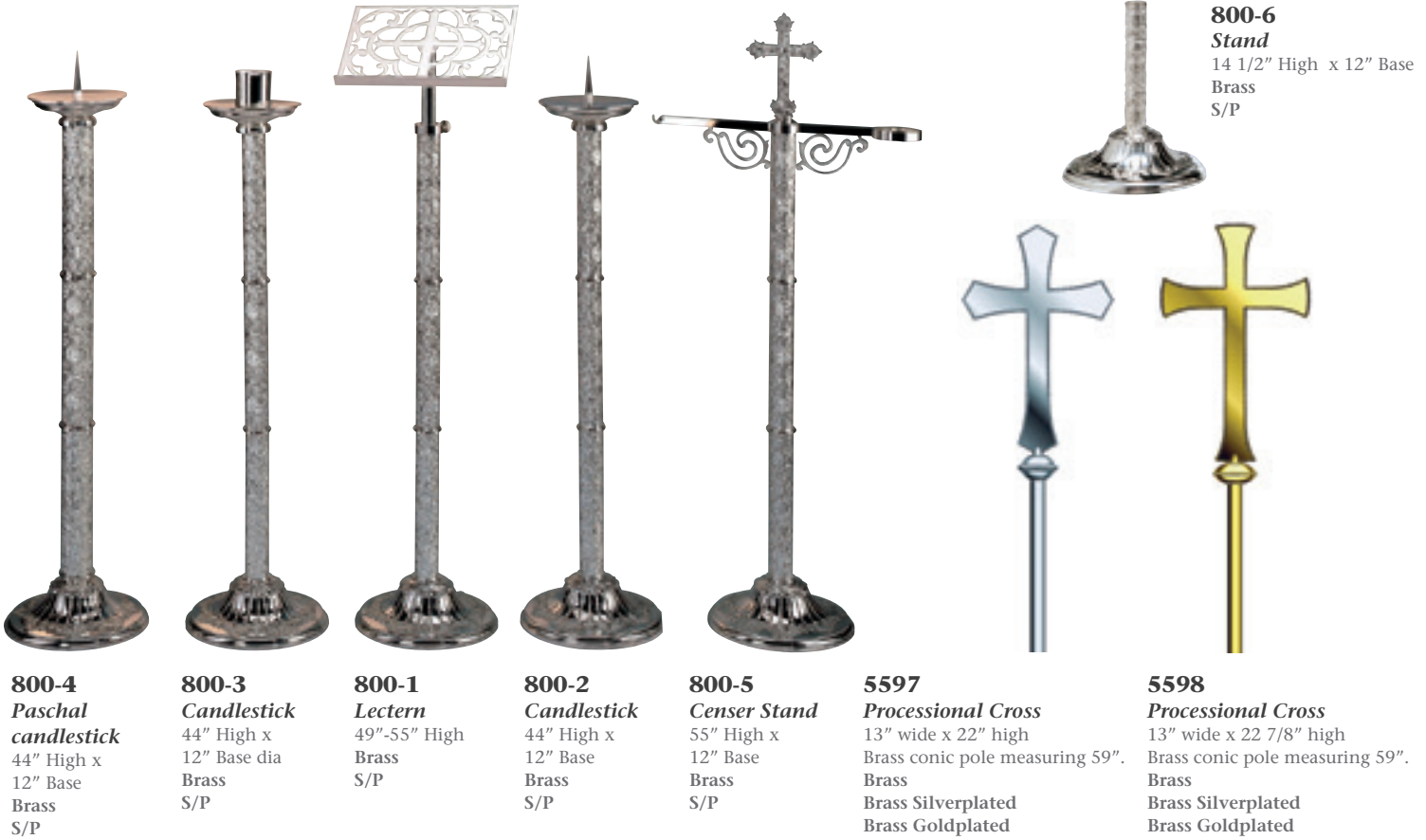
5050-T
Sanctuary Lamp
5 1/8" in height (glass globe not included)
Brass silverplated
Brass goldplated



5524
Altar Cross
14 1/8" Ht. Brass.

5523
Candlesticks
6 1/4" Ht. Brass





800-4
Paschal candlestick
44" High x 12" Base
Brass
S/P

800-3
Candlestick
44" High x 12" Base dia
Brass
S/P

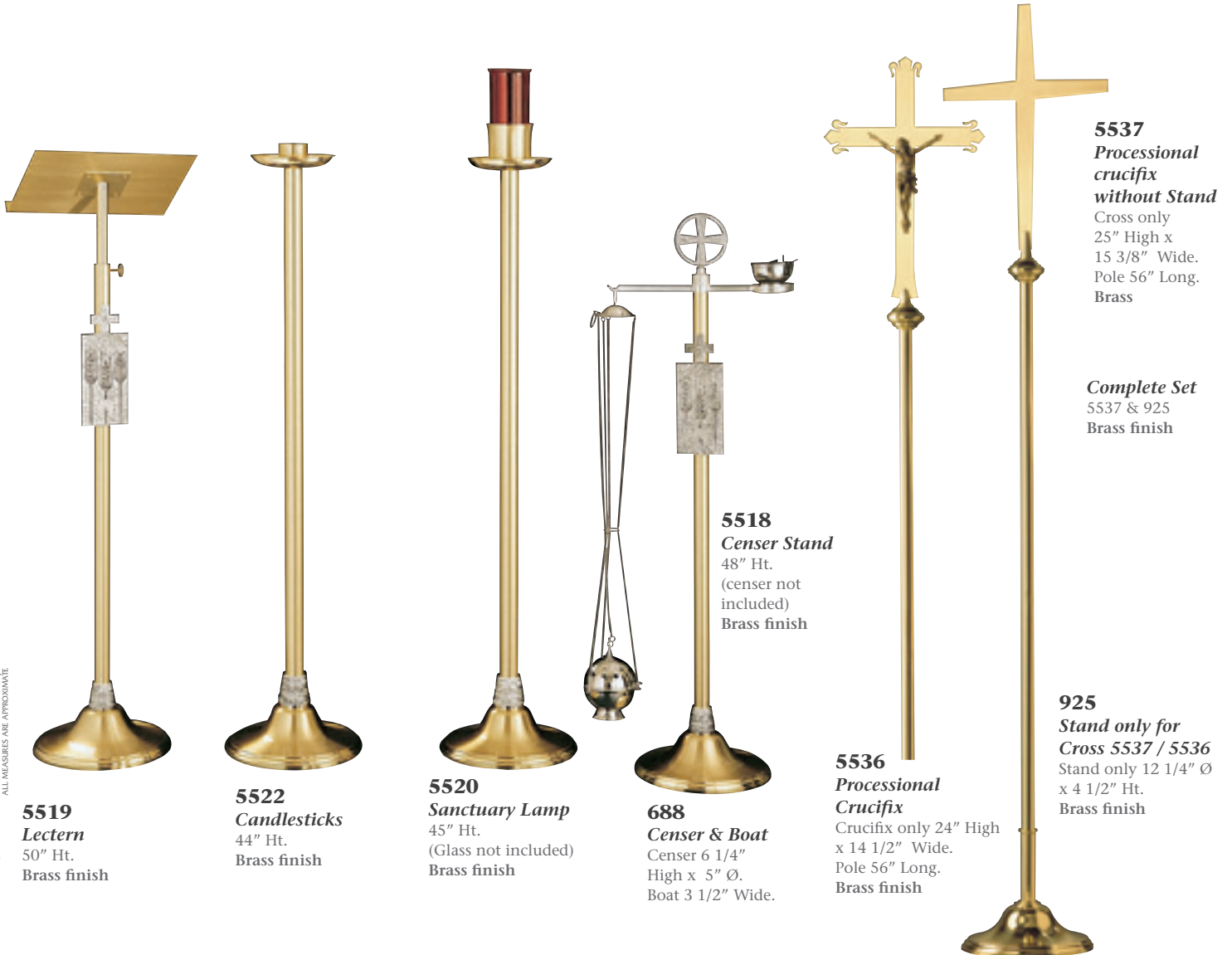
800-1
Lectern
49"-55" High
Brass
S/P

800-2
Candlestick
44" High x 12" Base
Brass
S/P

800-5
Censer Stand
55" High x 12" Base
Brass
S/P

5597
Processional Cross
13" wide x 22" high
Brass conic pole measuring 59".
Brass
Brass Silverplated
Brass Goldplated

5598
Processional Cross
13" wide x 22 7/8" high
Brass conic pole measuring 59".
Brass
Brass Silverplated
Brass Goldplated



5519
Lectern
50" Ht.
Brass finish

5522
Candlesticks
44" Ht.
Brass finish

5520
Sanctuary Lamp
45" Ht.
(Glass not included)
Brass finish

5518
Censer Stand
48" Ht.
(censer not included)
Brass finish

688
Censer & Boat
Censer 6 1/4" High x 5" Ø.
Boat 3 1/2" Wide.

5536
Processional Crucifix
Crucifix only 24" High x 14 1/2" Wide.
Pole 56" Long.
Brass finish

5537
Processional crucifix without Stand
Cross only 25" High x 15 3/8" Wide.
Pole 56" Long.
Brass

Complete Set
5537 & 925
Brass finish

925
Stand only for Cross 5537 / 5536
Stand only 12 1/4" Ø x 4 1/2" Ht.
Brass finish

CANDLESTICKS (11" in height)
ALTAR CROSSES (27 1/2" in height)
THREE LIGHT CANDLESTICKS (12" in height)
PROCESSIONAL CROSSES (88" in height)
STANDING CANDLESTICKS (44" in height)

AS-510-2
27 1/2" high
Brass
s/p



AS-510-1
11" high
Brass
s/p



AS-510-3
12" high
Brass
s/p



AS-357-3
12" high
Brass
s/p



AS-357-2
27 1/2" high
Brass
s/p



AS-357-1
11" high
Brass
s/p



AS-355-2
27 1/2" high
Brass
s/p

AS-355-1
11" high
Brass
Silverplate



AS-355-3
12" high
Brass
s/p



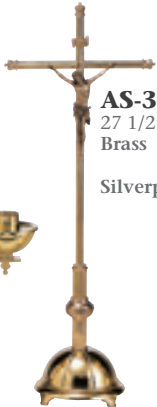
AS-358-3
12" high
Brass
s/p



AS-358-2
27 1/2" high
Brass
s/p



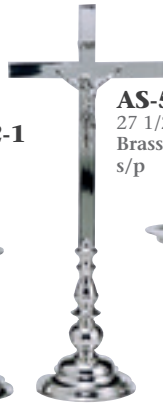
AS-358-1
11" high
Brass
s/p



AS-356-2
27 1/2" high
Brass
Silverplate



AS-356-1
11" high
Brass
s/p



AS-512-2
27 1/2" high
Brass
s/p



AS-512-1
11" high
Brass
s/p



AS-512-3
12" high
Brass
s/p



AS-512-5
88" high
Brass
Silverplate



AS-356-5
88" high
Brass
Silverplate



AS-357-5
88" high
Brass
Silverplate

934-1
Altar cross
23 1/2" tall
Brass finish



934-2
Candlestick 40" tall
Brass finish



AS-512-4
Standing candlestick
44" high
Brass
s/p



AS-356-4
Standing candlestick
44" high
Brass
s/p



AS-357-4
Standing candlestick
44" high
Brass
s/p



AS-512-5
88" high
Brass
Silverplate



AS-356-5
88" high
Brass
Silverplate



AS-357-5
88" high
Brass
Silverplate

PROCESSIONAL CROSSES

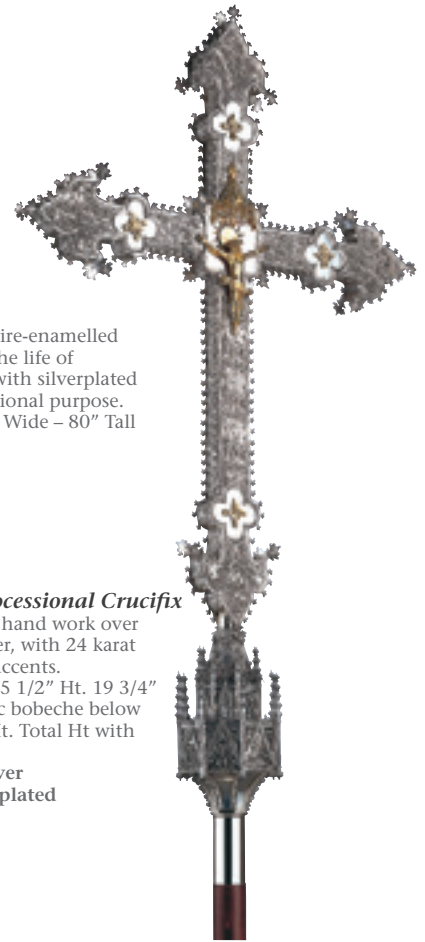


900
Plateresque
Processional
Crucifix
combining ancient repoussé-chasing techniques. Available in 925 Sterling Silver or brass heavily silver plated.
Brass Silver Plated
Sterling Silver
Measurements:
Total Height of cross only: 31"
Total Height with poles: 92"
Cross Width: 19 1/2"

* Poles are made of brass heavily silver plated for both options



916
Standing Cross
Genuine Cloisonné Fire-enamelled scenes representing the life of Christ. Wood poles, with silverplated bobeches, for processional purpose.
15 3/4" Ht. - 11 1/2" Wide - 80" Tall (Mounted on Poles)
Silver plated
Gold plated



915
Gothic Processional Crucifix
Fine filigree hand work over sterling silver, with 24 karat goldplated accents.
Cross size: 25 1/2" Ht. 19 3/4" Wide
Gothic bobèche below cross is 8" Ht. Total Ht with poles is 92".
Sterling Silver
Brass Silverplated



902
Stand
Richly ornamented, matching with our #900 Processional Cross.
16 1/8" Diameter x 15" High.
Brass Silverplated



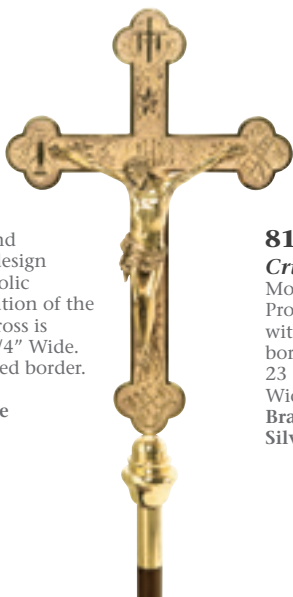
905
Stand
16-1/8" in height - 17-3/4" Ø
Brass
Brass Silverplated
Brass Goldplated



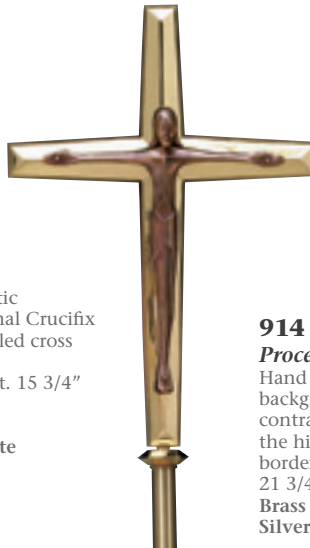
925
Stand
4 1/2" High
12 1/2" Diameter.
Brass High Polish
Brass Silverplated
Gold plated



915-1
Stand
Rich combination of walnut and cut out bands, matching processional crucifix #915.
19 3/4" Diameter x 14" High.
Brass Silverplated



903
Crucifix
Classic hand engraved design with symbolic ornamentation of the Passion. Cross is 20" x 13 1/4" Wide.
Round raised border.
Brass
Silver Plate



812
Crucifix
Modernistic Processional Crucifix with beveled cross borders.
23 1/2" Ht. 15 3/4" Wide
Brass
Silver Plate



914
Processional Cross
Hand hammered background contrasting with the highly polished border. Cross is 21 3/4" x 13" Wide.
Brass
Silver Plate

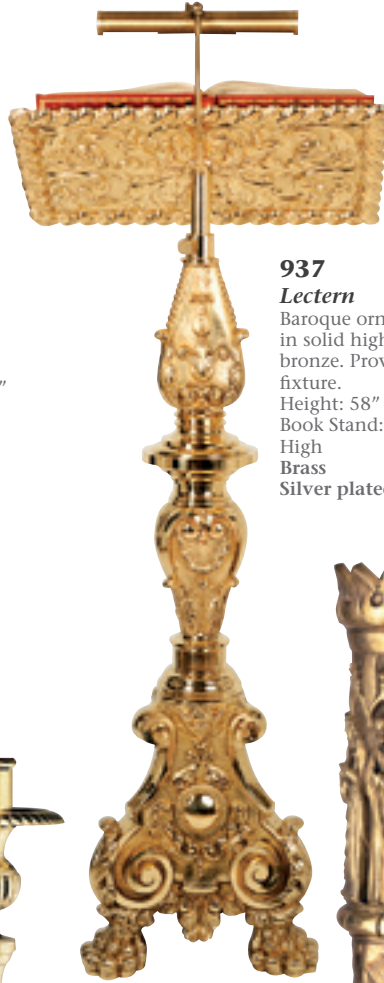


813
Crucifix
Fully hand hammered, with symbols of the Four Evangelists.
23" Ht. 16" Wide
Brass
Silver Plate

PASCHAL CANDLESTICKS / LECTERNS



938
Standing Sanctuary Lamp
Quality bronze casting baroque ornamentation
Height: 67 1/2" x 19 3/4" diameter.
Brass
Silver plated



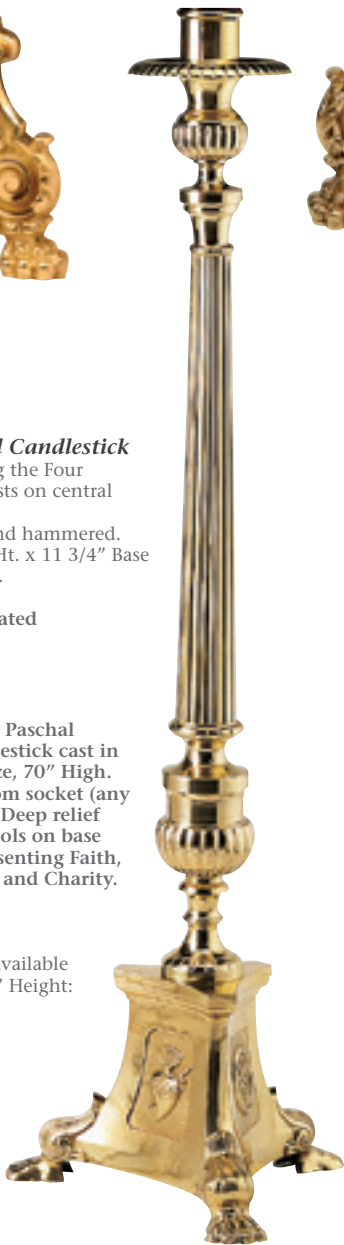
937
Lectern
Baroque ornamentation cast in solid high quality bronze. Provided with light fixture.
Height: 58"
Book Stand: 23" Wide x 15"
High Brass
Silver plated



936
Paschal Candlestick
Quality bronze casting, baroque ornamentation. Any socket diameter available upon request.
Height: 56"
Brass
Silver plated



923
Paschal Candlestick
Featuring the Four Evangelists on central bobèche.
Fully hand hammered.
43 1/2" Ht. x 11 3/4" Base diameter.
Brass
Silver Plated



934
Large Paschal candlestick cast in bronze, 70" High. Custom socket (any size). Deep relief Symbols on base representing Faith, Hope and Charity.
Brass
s/p

Also available in 40" Height:
Brass



926
Paschal Candlestick
Rich ornamentation featuring The Four Evangelists, The Crucifixion, The Resurrection and The Twelve Apostles
45 3/4" Ht. x 13 3/8" Base diameter.
Brass
Silver Plated



950
Beautiful, ornate romanesque design
47" high w/ 10 5/8" square base .
Silver plated
Gold plated



924
Paschal Candlestick
Deeply tooled scenes representing the Birth of Christ, Crucifixion and Ascension.
43 1/2" Ht. x 11 3/4" Base diameter.
Brass
Silver Plated

FLOOR / ALTAR CANDLESTICKS



AS-340
4 3/4" High - 6 1/4" Wide.
Bronze or Green Patina
Finish
Silverplate

AS-342
6 5/8" High - 4 3/4" Wide.
Bronze or Green Patina
Finish



AS-343
9 1/4" High - 5 1/4" Wide.
Bronze or Green Patina
Finish



AS-341
9 1/8" High - 4 3/8" Wide.
Bronze or Green Patina
Finish

AS-344
8 1/2" High - 5" Wide.
Bronze or Green Patina
Finish



929-C
Brass Finish with marble base
9 1/2" High



AS-345
7" High - 6 1/2" Wide.
Bronze or Green Patina
Finish



AS-277
Gothic standing candlestick,
40" high.
Brass
Silver Plate



AS-278
Gothic standing candlestick,
24" high.
Brass
Silver Plate



AS-352
4 1/8" Ht.
Brass
Silver plate



AS-351
3 1/8" Ht.
Brass
Silver plate



AS-347
5 3/8" Ht.
Brass
Silver plate



AS-353
4" Ht.
Brass
Silver plate



AS-349
5 5/8" Ht.
Brass
Silver plate



AS-350
3 5/8" Ht.
Brass
Silver plate



AS-348
3 1/4" Ht.
Brass
Silver plate



AS-354
2 1/2" Ht.
Brass
Silver plate



AS-346
4 5/8" Ht.
Brass
Silver plate



5509
Candlesticks
3" Ht. 6"Ø
With Spike or
Socket-Brass



5512
Candlesticks
3" Ht. 6"Ø
With Spike or Socket-
Aluminum
Brass



5510
Candlesticks
3" Ht. 6"Ø
With Spike or
Socket-Aluminum
Brass



5528
Candlesticks
made in resin, available
in three different
finishes (silver, bronze
and brass)
6 1/4" Ht. 5 5/8"Ø



5529
Candlesticks
made in resin, available
in three different
finishes (silver, bronze
and brass)
6 1/4" Ht. 5 3/8"Ø



5530
Candlesticks
made in resin, available
in three different
finishes (silver, bronze
and brass)
6 1/4" Ht. 5 5/8"Ø



5050-C
Candlestick
5 1/4" Ø
Brass silverplated

Brass goldplated



5511
Candlesticks
3" Ht. 6"Ø
With Spike or
Socket-
Brass



5507
Candlesticks
3 3/4" Ht. 4 1/8"Ø
With Spike or
Socket
Brass



738



739



740

COPE BUCKLES

Ref. Nr.	738	739	740
Max. Length	4"	6"	6 1/2"
Brass			
Silverplate			
Goldplate			



929
Pedestal
38" Ht x 42" Wide x 23" Deep.
Bronze & Marble
(Glass top not included)



927
Pedestal
38" Ht x 43" Wide x 26" Deep.
Bronze & Aluminum & Marble
(Glass top not included)



928
Pedestal
38" Ht x 47 1/4" Wide x 26" Deep.
Bronze & Marble
(Glass top not included)



929-L
51" high x 19 3/4" Wide x 15 3/4" Deep.
Brass Finish



929-LS
Lectern
Brass & transparent lucite
50,5" High x 19,5" Wide x 15,6" Deep
Brass high gloss
Brass Nickel plated



927-1
Lectern
Free form abstract base in travertine marble, cast in bronze.
47 1/4" Ht. x 18" Wide
Travertine Marble Base is 14" x 12" x 10" High



927-2
Standing Candlestick
Matching 2 light candlestick
41 1/2" Ht. x 10" Wide
Travertine Marble Base is 10" x 10" x 6"



6237
Lectern
constructed in transparent lucite
50" High x 20" Wide x 16" Deep.



6015
Lectern
51" Ht. x 20" wide x 16" deep

STATIONS OF THE CROSS



520
Stations Of The Cross
Hand carved baroque wood frame.
50" High x 35" Wide
Brass
Silver plated



521
Stations Of The Cross
Hand carved Gothic design.
53" High x 34" Wide
Brass
Silver plated



522
Stations Of The Cross
47" High x 26" Wide
Brass
Silver plated

513
Stations Of The Cross
Wood frame in Polychrome finish.
36" High x 26" Wide
Brass
Silver plated



2254
Stations Of The Cross
23" High x 20" Wide
Brass
Silver plated



510
Stations Of The Cross
28" High x 24" Wide
Brass
Silver plated



525
Stations Of The Cross
27" High x 20" Wide
Brass
Silver plated



512
Stations Of The Cross
Modern design, sculptured in solid
bronze.
Aprox: 13" High x 20" Wide
Brass
Silver plated

BISHOP'S APPOINTMENTS



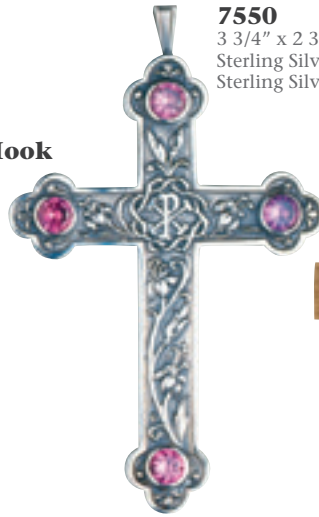
7500
3 1/2" x 2 5/8"
Sterling Silver
Sterling Silver g/p



Extra Heavy Chain "A"
Sterling Silver,
per inch
Sterling Silver g/p,
per inch

75 Mitre & Hook
Sterling Silver
Sterling Silver g/p

7560
3 1/4" x 2 3/8"
Sterling Silver
Sterling Silver g/p



7550
3 3/4" x 2 3/4"
Sterling Silver
Sterling Silver g/p



7570
3 1/2" x 2 1/2"
Sterling Silver
Sterling Silver g/p



750
Sterling Silver
Sterling Silver g/p



755
Sterling Silver
Sterling Silver g/p



765
Sterling Silver
Sterling Silver g/p



7605
4 1/2" height x 3 1/8" wide
Sterling Silver
Sterling Silver g/p



7610
4 3/8" height x 2 7/8" wide
Sterling Silver
Sterling Silver g/p



7615
4 1/2" height x 2 7/8" wide
Sterling Silver
Sterling Silver g/p



7620
4 1/2" height x 2 7/8" wide
Sterling Silver
Sterling Silver g/p



7600
Sterling silver Cross
 4" x 2 3/4"
 Sterling Silver
 Sterling Silver g/p



7600-1
Cross with lapislazuli
 4" x 2 3/4"
 Sterling Silver
 Sterling Silver g/p



7600-2
Cross with malachite
 4" x 2 3/4"
 Sterling Silver
 Sterling Silver g/p



7600-3
Cross with amethyst
 4" x 2 3/4"
 Sterling Silver
 Sterling Silver g/p



7585
 4 3/8" x 3"
 Brass g/p
 Sterling Silver g/p



7580
 4" x 2 11/16"
 Brass g/p
 Sterling Silver g/p



7590
 4 1/8" x 3 1/8"
 Brass s/p
 Sterling Silver s/p



7575
 4 1/8" x 2 3/4"
 Brass g/p
 Sterling Silver g/p



760
 3" x 2 1/2"
 Sterling Silver
 Sterling Silver g/p



777
 3 1/2" x 2"
 Sterling Silver
 Sterling Silver g/p



767
 4 1/2" x 3"
 Sterling Silver
 Sterling Silver g/p



786
 3 1/2" x 2"
 Sterling Silver
 Sterling Silver g/p



780 L
 2 1/2" x 1 3/4"
 Sterling Silver
 Sterling Silver g/p

780 S
 2" x 1 3/8"
 Sterling Silver
 Sterling Silver g/p



7555
Brass g/p
Sterling Silver g/p



770
Sterling Silver g/p
Sterling Silver g/p
Enamelled



7565
Brass g/p
Sterling Silver g/p



771
Sterling Silver g/p



772
Sterling Silver g/p



773
Sterling Silver g/p



761
Sterling Silver
Sterling Silver g/p



762
Sterling Silver
Sterling Silver g/p



763
Sterling Silver
Sterling Silver g/p



764
Sterling Silver
Sterling Silver g/p

BISHOP'S RINGS

Constructed in solid sterling silver or sterling silver goldplated. Set with semiprecious amethyst stones.

Ref. Nr.				
Sterling Silver				
Sterling Goldplate				



5595
Crozier
Gold or Silver.



5596
Crozier
Gold or Silver.



5593
Crozier
Solid brass head, with peace symbol.



5590
Crozier
head in copper finished in silverplate or goldplate.



5594
Crozier
Hand engraved "Flower Of Passion" design.



5591
Crozier
head in copper finished in silverplate or goldplate.



5592
Crozier
Head in solid brass, hand hammered

CROZIER'S STAFFS - RETAIL PRICES

STAFF TYPE (CONICAL)	DIVISION OPTION		
	1 SECTION	2 SECTIONS	3 SECTIONS
WOODEN STAFF s/p connectors			
WOODEN STAFF g/p connectors			
SILVER PLATED STAFF, smooth finish			
GOLD PLATED STAFF, smooth finish			
SILVER PLATED STAFF, hammered finish			
GOLD PLATED STAFF, hammered finish			

ARTIMETAL CROZIER'S HEAD ONLY

REF. ARTICLE	HEAD MEASURES	RETAIL		
		S/P	G/P	2 TONE
5590	10 3/4"	--	--	--
5591	10 1/2"	--	--	--
5592	9 1/2"			--
5593	11 1/2"			--
5594	13"			--
5595	10-7/16"			--
5596	10-1/16"			--

NOTE: Each brass staff (including all the sections) can have a maximum length of 59". Please indicate on your orders the desired length. If you do not indicate this, the standard length will be 57".

BISHOP'S APPOINTMENTS



401
Crozier
Hand hammered.
Holy Spirit symbol on node.
Metal conic staff. 70" High



408
Crozier
Olive design with
hand metal staff.
69" High



407
Crozier
Intricate celtic filigree work,
adorned with cloisonné fire
enamel cabouchons, metal staff
72" High



406
Crozier
Hand hammered overall,
metal conic staff.



412
Crozier
Hand hammered overall, featuring
"Agnus Dei" symbol and applied
crosses on node.
Conic metal staff. 68" High

PRICES FOR POLES ONLY

TYPE OF POLE (CONICAL)	NUMBER OF SECTIONS		
	1 SECTION	2 SECTIONS	3 SECTIONS
WOODEN POLE with silverplated connectors			
WOODEN POLE with goldplated connectors			
SMOOTH SILVERPLATED POLE			
SMOOTH GOLDPLATED POLE			
HAMMERED SILVERPLATED POLE			
HAMMERED GOLDPLATED POLE			

NOTE: The pole may reach a maximum length of 59". Please indicate the length needed when you place your order. Our standard length, if no specific measure is indicated would be of app. 57".

PRICES FOR CROZIER'S HEAD ONLY

REF.	HEAD MEASURES	PRICE		
		SILVERPLATED	GOLDPLATED	TWO TONE
401	13 3/8"			
402	14 1/2"			
403	13"			
404	12"			
405	12"			
406	12 3/8"			
407	12"			
408	10 1/2"			
412	13 5/8"			



402
Crozier
Featuring olive frown and dove
design symbolizing peace.
Wood or metal staff. 72 3/4" High.



403
Crozier
Gothic ornamentation.
Metal staff. 69" High.



405
Crozier
Fire enamel design, finished in
antique gold.



404
Crozier
Cross design, with soft round
hand hammering.
Metal staff. 69" High.

CARRYNG CASES ARE AVAILABLE FOR ALL MODELS AT



501
Cathedral-size Oil Container
19 1/8" High. 11" Width with handles.
5 Quarts Capacity.
Brass Silver Plated



700-01
Triple Glass Oil Stock With Case
Case size 9" x 5 1/2" x 3 1/4"
Container is 4 1/8" high, x 2 Oz. Cap.
Silverplated screw tops



758-01
Triple Oil-stock With Case
9" High - 16 Oz
Brass Silver Plated

758-02
Triple Oil-stock With Case
7 5/8" High - 8 Oz
Brass Silver Plated



731
Chrism vial
5" dia. 10 1/4" Long - 1 1/2" high
Brass, silver plated
Brass, gold plated



733
Oil Stock
6" tall, 3 oz. capacity
Brass g/p



734
Oil Stock
3 3/4" tall, 3 oz. capacity
Brass g/p



732
Chrism Vial
2 1/8" Dia. - 2 3/8" High
Brass Silver Plated
Gold Plated



737
Solid Lucite Container
with 3 brass oil-stocks. 2 1/4" Ht.
1 1/4" Dia.
Silver Plated
Gold Plated



735
Ring Oil Stock
1" Ht. - 1 1/8" Dia.
Silver Plated
Gold Plated

730
Triple Oil-stock
2 1/8" Ht. - 1 1/8" Dia.
Silver Plated
Gold Plated

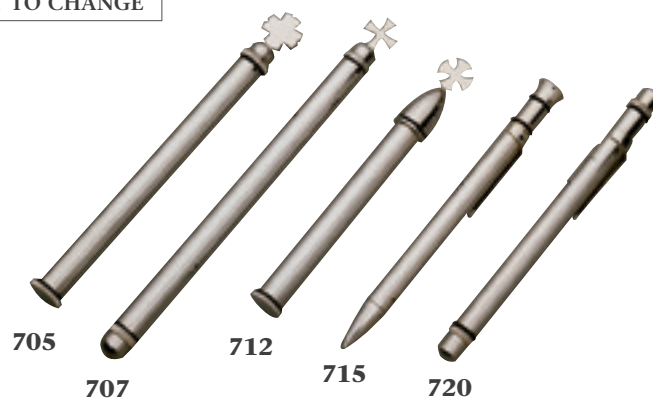
CASES SUBJECT TO CHANGE



700

De Luxe Mass Travel Kit

The most complete set in the market, comprising 12 different articles in heavy silverplate, goldlined finish: 1 chalice 3 1/4" high, well paten 3" diameter, 2 glass cruets, 4 1/4" tall, with screw metal tops, 1 spoon, 4" long, 1 oil-stock, 1 1/8" dia, 1 sprinkler 5" long, 1 Pyx, 2 1/4" dia. x 20 host cap., 2 candlesticks, 2" high, 1 standing cross, 4" high and rich lined soft cape, zipper closure, with shoulder strap (14 1/2" long x 12 1/2" wide x 5 1/4" deep)



Sprinklers

Made in solid brass, high polish silver plate.

705 - 5 7/8" Long

707 - 6" Long

712 - 5" Long

715 - 5 1/4" Long

720 - 5 1/4" Long

Available in goldplated finish at additional



5527

Mass Kit

Includes a 4 3/4" Chalice, 5 Oz. Capacity, Host Box, 100 Capacity, 2 Glass Cruets, Candle-Holder- Cross combination. "ABS" carrying case. 17 3/4" x 12 3/4" x 4 1/2"



725

Hand hammered mass set:

Comprises 11 pieces: 2 candlesticks, cross and supporting pedestal, chalice (5" 1/8 Ht. - 4" dia - 10 Oz. Cap.), 2 glass cruets with screw metal tops, matching tray and "ABS" solid case. (18" x 12 3/4" x 5")



721

Portable mass kit:

Comprises 12 pieces: 2 candlesticks (3" dia), cross (6 1/2" Ht.), chalice (5" Ht.- 8 Oz.), ciboria (4" dia - 120 Hosts), 2 cruets and tray, 2 glass containers, 1 host box, and "ABS" carrying case. (17 3/4" x 12 3/4" x 4 1/2")



5600

Mass Kit

Made in stainless steel with one chalice 4 3/4". In height, two glass bottles, two cruets, two candlesticks and one Host box with capacity for 100 Hosts. 14-1/2" long x 12-1/2" wide x 5-1/4" deep.



745
Key Box
4" x 2 1/4" x 2 3/8"
Brass Silver Plated



AS-243
Key Box
3 7/8" x 2 1/8" x 1 1/2",
Brass Silver Plated



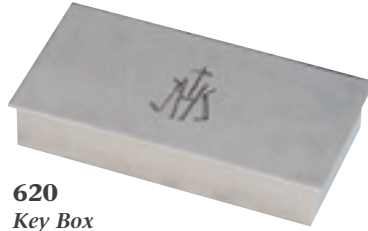
5559
Box
3" Ht x 4" wide x 2 1/4" Deep Lined
with burgundy velvet
Goldplated finish



260



262



620
Key Box
4" x 2" x 3/4"
Brass Silver Plated



719
Baptismal Shell
4 1/2" Dia.
Silver Plated or Gold Plated
Sterling Silver

KEY-BOXES

Ref. Nr.	260	262
Size	4 1/2" x 2 1/4" x 7/8"	4 1/2" x 2 1/4" x 7/8"
Brass		
Silverplate		
Goldplate		



AS-613-E



AS-615-E



AS-3100



AS-618-E



AS-611-E



AS-323



AS-321



AS-320



AS-325



AS-329



AS-326



AS-322



AS-324



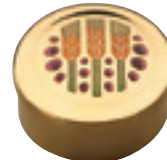
AS-327



AS-328



736
Altar Bells
5" tall
Brass finish



S-413-E



S-415-E



S-217-E



612-JHS



S-212-E



612-PX

AS-320 / AS-321
AS-323 / AS-325
AS-326 / AS-329
Modern, yet attractive paten-pyxes, ornamented with cloisonné enamel or stones.
AS-320 trough **AS-326** with cloisonné enamel, finished in 24 K. Gold Plate
AS-327 trough **AS-329** adorned with natural stone
Paten 4" diameter - Pyx 2 3/4" diameter - 20 Hosts capacity. Leather pouch, lined with silk fabric
AS-3100 HOST BOX, 3 3/4 " Dia x 2" High Hand-Hammered, 100 Hosts.
Brass Silverplate
S-618-E
1 1/2" Ht. - 3 5/8" Dia. 100 Hosts
S-611-E
1 1/2" Ht. - 3 5/8" Dia. 100 Hosts
AS-613-E
1 1/2" Ht. - 3 5/8" Dia. 100 Hosts
AS-615-E
1 1/2" Ht. - 3 5/8" Dia. 100 Hosts
S-415-E
1 1/4" Ht. - 2 1/2" Dia. 30 Hosts
S-413-E
1 1/4" Ht. - 2 1/2" Dia. 30 Hosts
S-212-E
1 1/4" Ht. - 2" Dia. 15 Hosts.
S 395
S-217-E
1 1/4" Ht. - 2" Dia. 15 Hosts.
612-JHS
612-PX
3/4" Ht. - 2" Dia. 6 Hosts. JHS or PX hand engraved

Procesionalia Collection





PR-01

Processional carriage. Brass Silverplated, oven lacquered
 Measurements: 10' 6 1/2" High x 5' Wide x 6' 6" Long
 The complete Processional carriage includes:

	Each \$	TOTAL \$
	Air - breathers	
	Hexagonal Pedestal	
12	Processional torches with base	
2	Flower Vases - 13 1/2" High	
4	Flower Vases - 11 1/2" High	
4	Flower Vases - 10" High	
6	Flower Vases - 7 1/2" High	
6	Candlesticks - 17 1/4" High	
8	Candlesticks - 14 1/2" High	
6	Candlesticks - 11 3/4" High	
2	Tail Candelabra (6 lights each)	
1	Knocker	
1	Vesture for 3 feet Madonna	
1	Front Processional Cross for carriage - 14 1/2" High	
	Total	

		Each \$	TOTAL \$
	Air - breathers		
	Octagonal Pedestal (lined backside)		
4	Corner Lantern		
	Total		





PR - 13



PR - 12



PR - 11



PR - 10



PR - 09





PR - 08

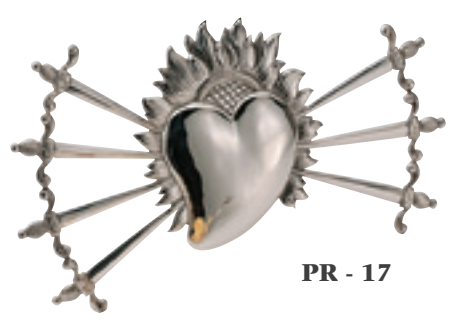
PR - 07



PR - 06



PR - 04



PR - 17



PR - 15



PR - 16



PR - 14



N - 134



PR - 05



PR - 05



PR - 03



PROCESIONALIA 2016 PRICE LIST

PR-03

Flower Vase - 7 1/2" High, brass silverplated & lacquered
 Flower Vase - 10" High, brass silverplated & lacquered
 Flower Vase - 11 1/2" High, brass silverplated & lacquered
 Flower Vase - 13 1/2" High, brass silverplated & lacquered

PR-04

Candlestick - 12" High, brass silverplated & lacquered
 Candlestick - 14 1/2" High, brass silverplated & lacquered
 Candlestick - 17 1/2" High, brass silverplated & lacquered

PR-05

Tail Candelabra - 6 Lights - 35 1/2" High,
 brass silverplated & lacquered
 Tail Candelabra - 8 Lights, brass silverplated & lacquered

PR-06

Frontal Cross - 14 1/2" High, brass silverplated & lacquered

PR-07

Procesional pass Lantern - 20 1/2" High,
 brass silverplated & lacquered

PR-08

Knocker - 8" Long x 3" Deep x 4" High
 Brass silverplated & lacquered

PR-09

High Torch - 6 1/2 feet High with base.
 Brass silverplated & lacquered

PR-10

Procesional Lantern - 6 feet High,
 brass silverplated & lacquered

PR-11

Paschal Procesional Candlestick - 5 1/2" feet High,
 brass silverplated & lacquered

PR-12

Banner Hanger - 8 feet High Brass silverplated & lacquered

PR-13

Banner Hanger with Cross Bar - 7 feet High
 Brass silverplated & lacquered
 Banner Hanger without Cross Bar - 7 feet High
 Brass silverplated & lacquered

PR-14

Madonna Knife - 5 1/4" Long, brass silverplated & lacquered
 Madonna Knife - 5 1/4" Long, brass goldplated & lacquered

PR-15

Madonna Knife - 5 3/4" Long, brass silverplated & lacquered
 Madonna Knife - 5 3/4" Long, brass goldplated & lacquered

PR-16

Heart with 7 swords, 5" Long, brass silverplated & lacquered
 Heart with 7 swords, 5" Long, brass goldplated & lacquered

PR-17

Heart with 7 swords, 10" Long, brass silverplated & lacquered
 Heart with 7 swords, 10" Long, brass goldplated & lacquered

PR-18

Support for long vestment (3 feet high Madonna),
 brass silverplated & lacquered

PR-19

Crown with Aureole, 21 1/4" Wide - Head Ø 3 3/4"
 Brass goldplated, synthetic stones

N-134

Half Moon - 21 1/2" Long Sterling Silver

Madonna vestment (3 feet tall) with gold hand embroidery
 Fabric templet (6 feet x 4 1/2 feet) with
 superimposed ornamentation
 Carriage fabric bottom cover (cotton 100%)
 Net overcover with gold threading
 for 3 feet High Madonna)
 Face ornamental band for 3 feet Madonna
 Lower cover for a 3 feet High Madonna (simple design)
 Rails for Procesional Carriage with simple brackets
 Rails for Procesional Carriage without brackets
 Simple Brackets for rails for Procesional Carriage

5. General Information



• Materials used:

The most commonly used materials in our production are Brass, Bronze, Sterling Silver, Gold and 24 karat electrolytic Gold that is used for our goldplating processes. These are all certified materials and follow exhaustive controls before being manufactured in our workshops.

• Finishings:

- All our articles, no matter the finishing they show in this catalogue can be finished in any other way. The available finishings would be the following:

- 24 karat electrolytic goldplate
- 1000 Sterling Silver electrolytic plating
- Two tone finish, combining silverplating at 1000 Sterling Silver and 24 Karat goldplating.

• Enamels:

All enamels shown in our items are entirely handcrafted and can be carried out using two different systems:

- **Fire enamelling:** It is the main system of enamelling. This procedure dates back from the Middle Ages and consists on “crystal dust” of different colours being applied with water on top of the surface to be enamelled. After that the water content is dried up and it is baked at temperatures above 800 degrees. This will give the enamels all their beauty and colourfulness. The items in this catalogue made using this process are indicated with the legend “fire enamelled”

- **Epoxy or cold enamelling:** It is the commercial enamelling. It consists in the application of resins with different colours that will be later baked in the oven where they will reach final looks similar to those of the fire enamelled pieces.



**• Lacquering:**

The vast majority of our items, in their final finishing are treated with vitreous lacquer. This process prevents the metal pieces from tarnishing and guarantees the durability of the different finishings of silver and gold without needing to clean them at all. In order to lacquer the pieces first they must be thoroughly cleaned, they are immersed in several tubs with degreasing liquids, then the lacquer is applied by atomising it with spray guns inside of an isolated room with continuous water curtain. Once the piece is lacquered it is placed inside of an oven at 160° for 20 minutes that will vitrificate the lacquer. A considerably hard crystal-like film on the surface of the piece will result from this process. This film will protect the piece from minor erosion and oxidizing. Only some items finished entirely in 24 karat electrolytic goldplate, because of their design, are not protected with lacquer, given that this is a material that does not oxidize.



M

• Articles to match:

Many of the chalices shown in this catalogue have their Ciboria or open Ciboria to match, please feel free to contact our customer service department if you are interested in the matching pieces for a specific model for which the picture is not shown and we will provide pictures or designs of the existing matching articles.

Also, some of our chalices are part of a bigger set composed by other metalware items such as Monstrances, Ostensoria, Tabernacles, Missal stands, etc. In this case, you will see references in the item that will take you to the rest of the set in other sections of the catalogue.



• Engraving:

In our workshops we count with artisan engravers able to carry out all sorts of inscriptions or designs in any of the articles we manufacture. Send us your requests and we will provide the most professional engraving in the market.

• Care and Preservation:

As we have already mentioned, all of our items are made using noble materials with high quality finishings, in most cases with mirror polishing and protected with vitreous lacquer.

For their care and preservation, it is only necessary to treat them with the care and attention an artistic item requires and only remove dust and fingerprints produced by the normal use of the piece with a feather brush or clean, soft, 100% cotton cloth that must always be used following the sense of the polishing marks. In the event of a wine stain or any other that cannot be removed using the mentioned procedures, please use a lightly humid soft cotton cloth. Once removed, dry the piece with care using a dry cotton cloth.

NEVER APPLY METAL CLEANERS, SOLVENTS OR ANY OTHER ABRASIVE PRODUCT LIKE ALCOHOL, GASOLINE, ETC.

• Custom Articles:

Because of the artisanal structure of our company, one of the aspects that best describes us in the market is our sheer capacity for developing custom articles. We are prepared for carrying out these jobs and we have the necessary expertise to develop any kind of metalware piece you may need.

You only need to bring in your ideas or specifications and we will develop a sketch for you with the degree of quality you request, together with the budget and a firm delivery timeframe. The final result, if you decide to go ahead with the project will be a magnificent and unique work of art that will be part, in the centuries to come, of the last pieces of real handcrafted metalware made in the world

• Safety and Hygiene at work:

It is with great satisfaction that we can guarantee within our productive process, the SAFETY and HYGIENE at work. Even though our production is artisanal we are certified and updated with the most modern safety and hygiene control measures at our premises, going through the most rigorous yearly controls imposed by the Labour Regulations of the Spanish Administration.

• Cases:

For a higher protection and care of our chalices, monstrances and other items of our production, standard and custom cases are available. Said cases are available in a material that imitates black leather, with padded interior and lined with red velvet. Special cases made in other materials are available upon request, even with real leather on the outside. **STANDARD CASE FOR CHALICE & PATEN:**

• Guarantee:

As a final consequence of all our productive processes and backed up by the self-assurance provided by our experience in the manufacturing of religious metalware for over 40 years, **ALL OUR ARTICLES**, are guaranteed for **5 YEARS** against manufacturing defects.

In the event of a claim falling under this guarantee a written request must be addressed to our customer services department that will give you instructions on how to solve the issue.



G-100 Cleaning cloth

For cleaning of unlacquered metals
For silver

G-101 Cleaning cloth

For cleaning of unlacquered metals
For gold





• Administration and control of the productive process:

From the moment we receive an order for one of our items, an administrative and productive process, unique amongst the artisanal workshops, starts.

All orders are processed on a daily basis with detailed data on the customer, deadlines and all eventual aspects of the product such as reference numbers, finishings, etc.

Once the order is processed a production order is automatically generated by our computing systems with all the details regarding the productive process and with a barcode that will be read by a special software, custom made for this company, registering all production times and the different stages that the piece will go through until the completion of the article and the shipment to the final destination.

This guarantees that no aspect of the productive process is omitted and that all intermediate quality controls are carried out.

• Packing:

As final element of our productive process the packing system for our artisanal production is the best in the market both for road and air transportation.

Once carried out the final quality checks of our metalware, the items are carefully wrapped in their soft flannel bags (chalices and ciboria) or wrapped with silk paper. After that, they are protected in bubble wrap that prevent them from small hits and scratches during transportation. Finally, they are taken to the packing and shipping section where they are carefully placed in double thickness cardboard boxes and isolated from each other by bags of injected foam, where each article is entirely surrounded by said foam protection that once expanded provides an outstanding protection in order to make the items travel safely to their final destination.



INDEX

ARTISTIC SILVER - ARTIMETAL

Presentation	Pag. 1 - 8
Chalices & Ciboria	Pag. 9 - 67
Monstrances & Ostensoria	Pag. 68 - 78
Tabernacles	Pag. 79 - 96
Altar accessories & Bishop's appointments	Pag. 97 - 122
Procesionalia Collection	Pag. 123 - 128
General Information	Pag. 129 - 132



Luis Molina Acedo, S.A.
Justo Dorado, 12
28040 Madrid, Spain

Product design:
Luis Molina Acedo, S.A.

